



48/2 Hythe Street, MOUNT DRUITT, NSW 2770

SOLD \$470,000FIRST WEEK

Spacious Split Level Unit

This well presented, spacious apartment is located walking distance to Westfield Shopping Centre and just minutes from Mount Druitt Train Station. Close to local schools and parks.

Features:

Open plan Living and Dining Area With Split System a/c and gas outlet for heating

Gourmet Kitchen with Gas Cooking

Master with Walk-in robe

Other 2 bedrooms with built-in wardrobes

Floating timber floors

2 Bathrooms (one on each level)

Large Balcony off living area

TYPE: Sold

INTERNET ID: 54P2112

SALE DETAILS

Genuine Offers Invited

CONTACT DETAILS

Blacktown

Shop 3/1 Aldgate Street
Prospect, NSW
02 9631 8222

Hakan Samsa

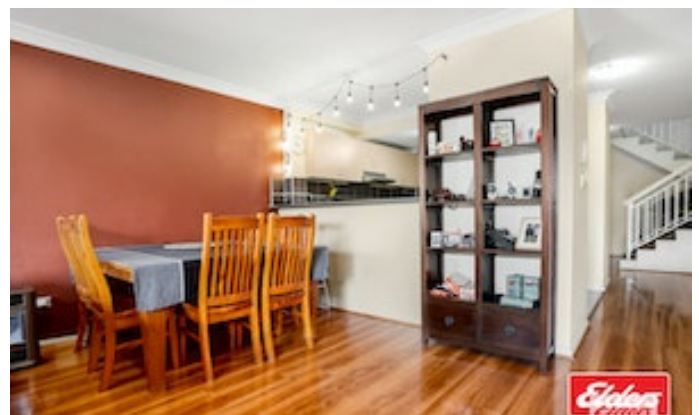
0414 038 542

The particulars contained herein are supplied for information only and shall not be taken as a representation in any respect on the part of the vendor or its agent. Interested parties should contact the nominated person or office for full and current details.

2x Security Parking Spaces

Other features: Car Parking - Basement, Close to Shops, Close to Transport

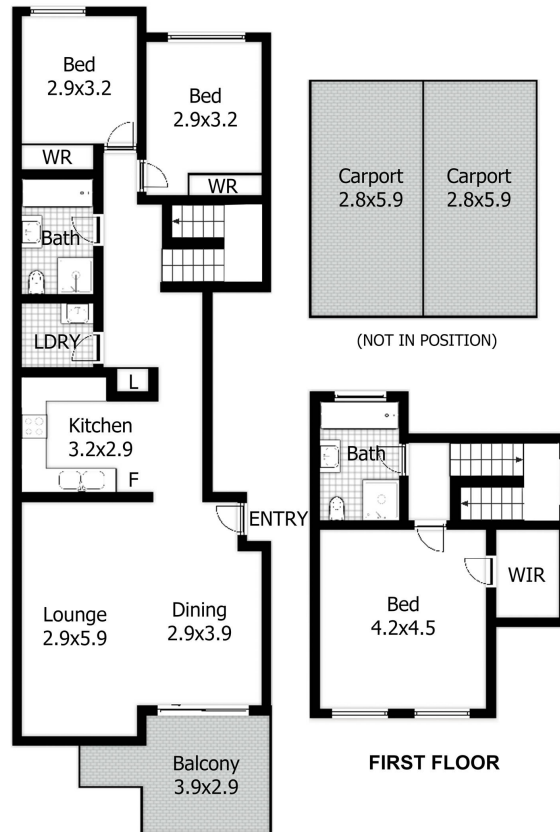
- Bedrooms: 3
- Bathrooms: 2
- Double garage







48/2 Hythe Street, Mt Druitt



DISCLAIMER:

This floor plan is used for marketing purpose only and is subject to errors and inaccuracy. The marketing Agent & N2 Media will not accept any liability. Interested parties should make and rely on their own enquiries.