



3/38 Pacific Street, CRESCENT HEAD, NSW 2440

Innovative Eco-friendly Townhouse by the Beach

How cool is this? Here is an exciting opportunity to invest in one of the most unique properties currently offered for sale in the sought-after seaside village of Crescent Head.

Unconventional and eye catching, this trendy tri-level townhouse embraces the era of eco- friendly with its energy efficient architectural windows, Australian hardwood timbers, recycled corrugated iron features, and natural elements of solid stone.

Step into the entry level and be greeted by a sleek & modern fully equipped kitchen that offers ample storage, a 5-burner gas cooktop, electric oven, and stainless-steel dishwasher.

This area seamlessly flows onto a private outdoor undercover entertaining deck and low maintenance tropical garden.

Located mid-level is a light filled spacious lounge room which could also double as a work from home space or additional area for guests. Head on up the stairs and discover a contemporary bathroom with a luxurious bathtub, study nook, and extra storage.

To the third level providing lots of natural light and air flow is an open loft bedroom featuring high ceilings and a triangular window with louvres.

TYPE: Sold

INTERNET ID: 5P13196

SALE DETAILS

Contact Agent

CONTACT DETAILS

Crescent Head

Shop 4 Rankine Street
Crescent Head, NSW
02 6566 0306

Nathan Wilson

0418 766 977

With a short level walk to the surf, shops, bakery, outdoor cafes, eateries, and social club, this would be the ideal property for a first home buyer, surf lover, holiday seeker, or savvy investor seeking a permanent rental or Airbnb.

Strata Rates - \$350.00 approx. per quarter

Council Rates - \$600.00 approx. per quarter

Rental Potential - \$450.00 per week (fully furnished, all inclusive)

Holiday Potential â## On Request

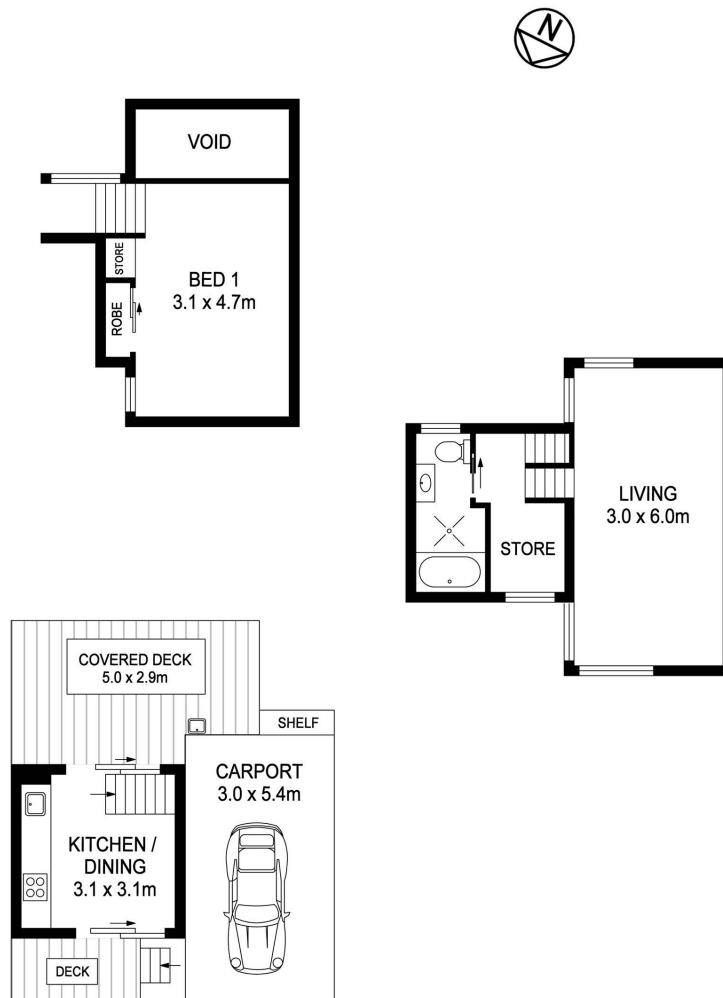
Life's a wave, so catch it, call Nathan Wilson today to organize your inspection on 0418 766 977.

Other features: Close to Schools, Close to Shops, Close to Transport

- Bedrooms: 1
- Bathrooms: 1
- Single carport







3/38 Pacific St, Crescent Head

LIVING : 18.0m²
 KITCHEN : 29.1m²
 STORE : 9.8m²
 CARPORT : 16.2m²

DISCLAIMER

PLANS SHOWN ARE FOR MARKETING PURPOSES ONLY. ALL DIMENSIONS ARE APPROXIMATE AND NOT TO SCALE. THEY ARE SUBJECT TO ERRORS AND INACCURACIES AND NO LIABILITY WILL BE ACCEPTED. INTERESTED PARTIES SHOULD MAKE THEIR OWN INQUIRES.



LIFESTYLE GROUP