



45 North Street, WEST KEMPSEY, NSW 2440

Don't Drive By - Drive, Buy!

With the recent Covid-19 restrictions we would like to advise that the following government guidelines, face masks and check-in will be required upon entry to private inspections. We are also offering virtual inspections upon request.

At Elders Lifestyle Group we are continuing to serve the needs of our customers, with a focus on ensuring our clients are well serviced throughout this period. We are here to support you and provide guidance during these times. If we can assist you with any of your property needs please do not hesitate to get in touch. We thank you for your understanding as we navigate through this period together.

Charm and a unique facade combine with user friendly design to ensure this wonderful family home appeals to even the most discerning buyers. The location will be popular being close to schools, hospital and the local race club.

The property features:

- Solid brick construction
- 5.5kw Solar system
- Private courtyard

TYPE: Sold

INTERNET ID: 5P13206

SALE DETAILS

\$385,000

CONTACT DETAILS

Adam Shore
0429 653 533

- Single carport
- Ensuite
- 550m2 corner block
- Air conditioning

Property Details -

Council Rates: Contact Agent

Land Size: 550 sqm

Rental Potential: Contact Agent

With a feature list this long we are sure to get plenty of interest. Give us a call today on 0429 653 533 or 6562 6144 to book in your private inspection.

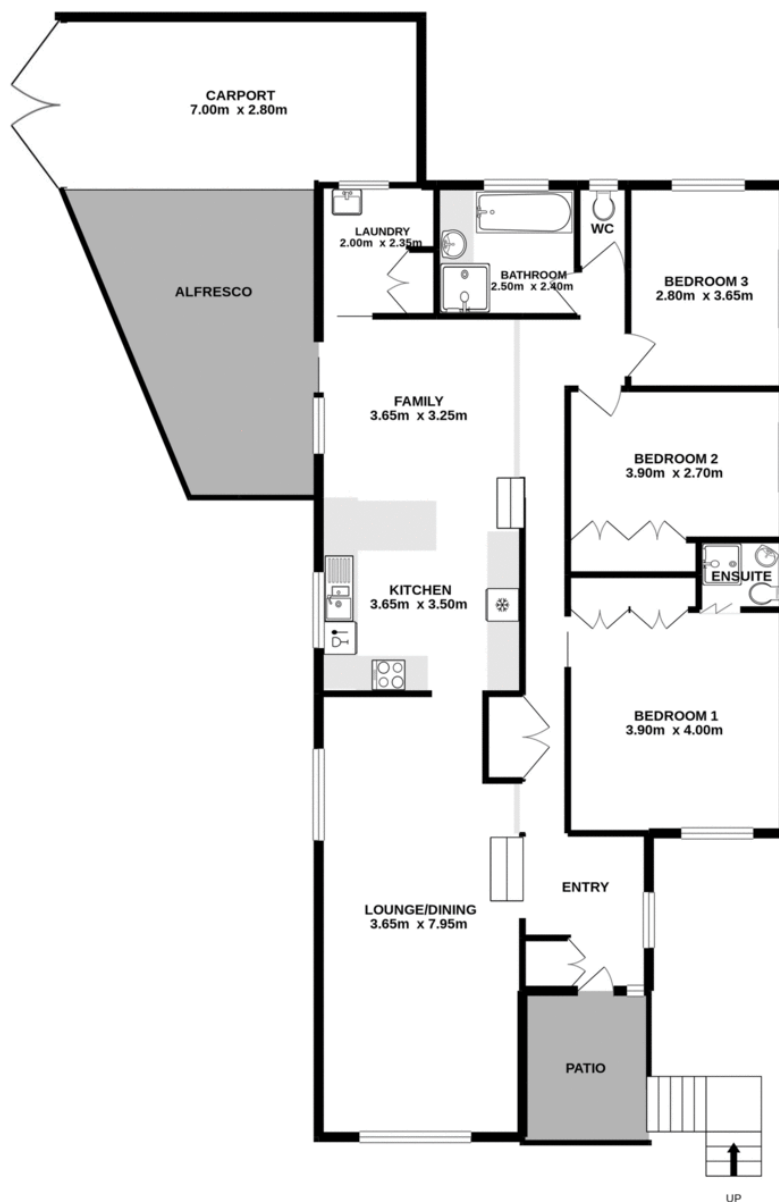
DISCLAIMER: The information contained in the advertising of this property is based on information provided to the agents, and the vendor and agents expressly disclaim any liability arising therefrom. The accuracy of the information cannot be guaranteed, and prospective purchasers should make their own enquiries and form their own judgement as to these matters.

Other features: Close to Schools, Close to Shops, Close to Transport

- Land Area 550.00 square metres
- Bedrooms: 3
- Bathrooms: 2
- Single carport
- Air Conditioning







Elders 45 North Street West Kempsey Measurements are approximate. Not to scale. Illustrative purposes only. Open2view does not take any responsibility for any information supplied. TOTAL FLOOR AREA : 142.3 sq.m. approx.