



13 Walker Street, CRESCENT HEAD, NSW 2440

Dreamy Seaside Cottage in the Heart of Crescent Head

Now here's a home that makes you go just Wow!

Smack bang in the heart of Crescent Head only 500m to the shops and 800m to the beachfront sits this utterly charming and adorable cottage.

Step inside from the quaint verandah to a classic white light filled interior with timber lined raised ceilings. Leadlight windows and shiplap panelling are complemented by the warmth of beautiful timber floors. Feature ceiling fans, decorative ceiling roses, and coastal style pendant lighting showcase an effortless mix of old new.

At the front of the home sits an intimate lounge room with an arched fretwork entry and cosy wood fire. A private bedroom opens out onto the covered deck.

A high-ceilinged wraparound Hampton style kitchen features solid granite bench-tops and large server window opening onto a spacious living and dining area flowing onto a sunroom via French double doors.

A pool view bedroom and further guest bedroom are separated by a versatile room that would make the ideal study or dressing room.

TYPE: Sold

INTERNET ID: 5P13976

AUCTION DETAILS

6:00pm, Tuesday November 16th, 2021

CONTACT DETAILS

Crescent Head
Shop 4 Rankine Street
Crescent Head, NSW
02 6566 0306

Nathan Wilson
0418 766 977

Tucked away is a laundry and country cottage bathroom with a claw foot bathtub, feature floor tiles, timber and stone vanity, and brass tap ware.

Outdoors is an absolute private oasis and designed for low maintenance with resort style gardens, mineral saltwater in-ground swimming pool, water feature, summer room entertaining with a covered BBQ area, and a modern cabana with stained glass windows if you please! Talk about packing a punch, there's even a single lock up garage!

It's a dream cottage in the ultimate lifestyle location, so gear up and get ready to be the winning bidder come Auction Day.

- Classic white interior with raised timber ceilings
- Leadlight windows and decorative ceiling roses
- Coastal style pendant lighting and ceiling fans
- Fretwork arch lounge room with cosy wood fire
- Hampton style kitchen provides window servery
- Tropical oasis backyard with pool and gazebo

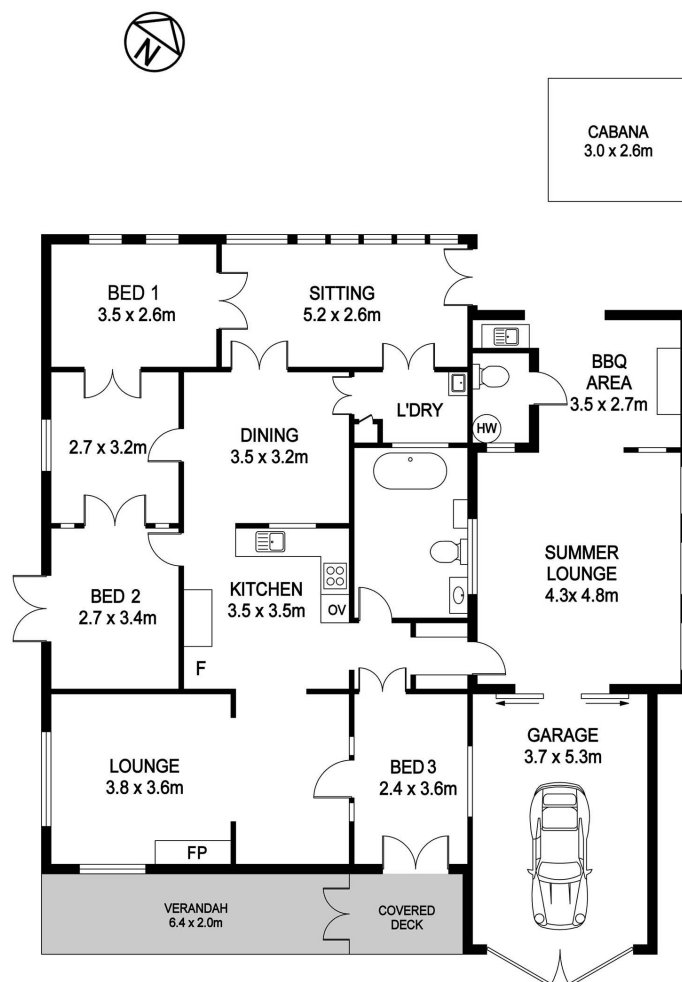
Other features: Close to Schools, Close to Shops, Close to Transport, Pool

- Land Area 364.00 square metres
- Bedrooms: 3
- Bathrooms: 2
- Single garage









13 Walker St, Crescent Head

INTERNAL : 170.7m²
CABANA : 7.8m²

DISCLAIMER

PLANS SHOWN ARE FOR MARKETING PURPOSES ONLY. ALL DIMENSIONS ARE APPROXIMATE AND NOT TO SCALE. THEY ARE SUBJECT TO ERRORS AND INACCURACIES AND NO LIABILITY WILL BE ACCEPTED. INTERESTED PARTIES SHOULD MAKE THEIR OWN INQUIRES.

