



487 Macleay Valley Way, SOUTH KEMPSEY, NSW 2440

Central Location - Family Vacation

Situated on the outskirts of town, just 1 km to the freeway exit and 20 km to Crescent Head beaches is this wonderful family home. The generous 4380 m2 block allows for space and privacy while the 4 bedroom brick home has everything a family would need.

Features include:

- 4 Bedroom brick home
- 2 Living areas
- 2 Bathrooms
- In-ground pool
- Lots of shedding
- 1 Acre block
- Renovated kitchen
- Ducted A/C

TYPE: Sold

INTERNET ID: 5P14147

SALE DETAILS

\$685,000

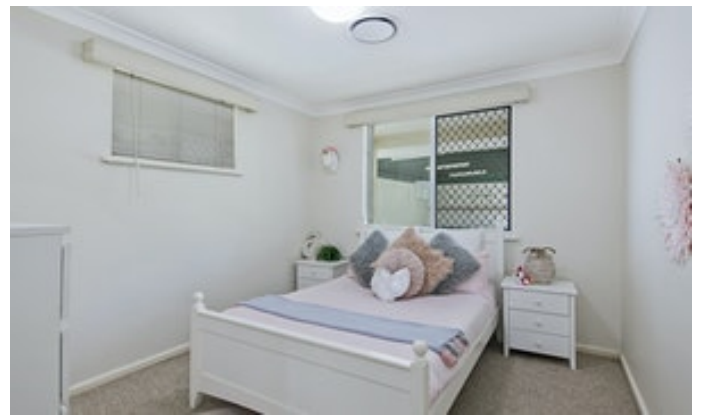
CONTACT DETAILS

Adam Shore
0429 653 533

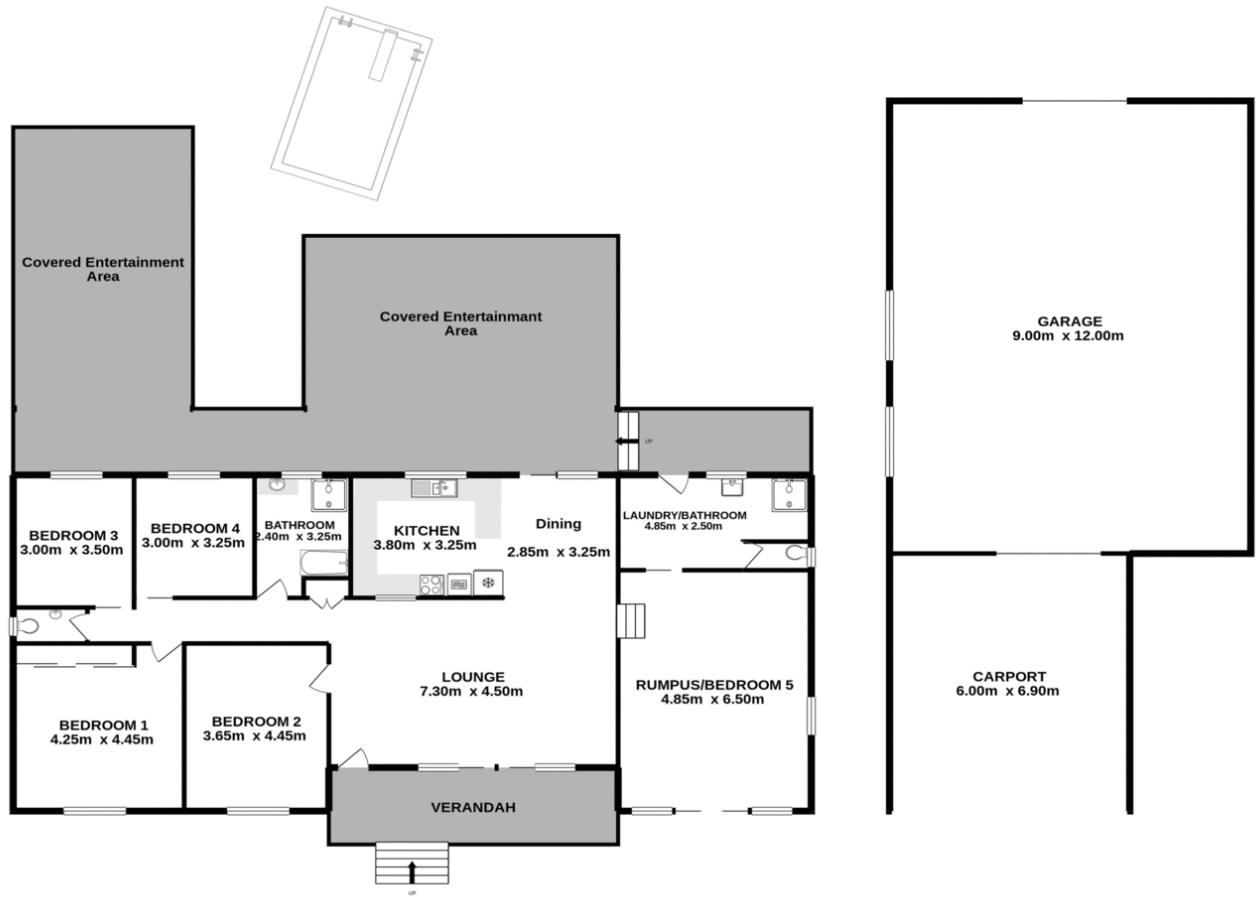
Give us a call today on 0429 653 533 or 6562 6144 to book your private inspection today.

Disclaimer: The information contained in the advertising of this property is based on information provided to the agents, and the vendor and agents expressly disclaim any liability arising therefrom. The accuracy of the information cannot be guaranteed, and prospective purchasers should make their own enquiries and form their own judgement as to these matters.

- Land Area 4,380.00 square metres
- Bedrooms: 4
- Bathrooms: 2
- 6 car garage
- Air Conditioning







HOUSE TOTAL FLOOR AREA: 168.7 sq.m. approx.



487 Macleay Valley Way South Kempsey

Measurements are approximate. Not to Scale. For illustrative purposes only.