



## 30 Bushland Drive, YARRAVEL, NSW 2440

### Sweet Retreat

Small acreages close to town have been in high demand of late and when they offer a laid back lifestyle with a minimum of fuss like this one does, it's not hard to understand why.

This neat 3 bedroom residence fits perfectly into its natural surroundings offering space from neighbours and privacy from the street. The living room has an expansive view overlooking the acreage and dam giving you a great feeling of space.

Being 5.3 acres with a dam down the back, makes this fenced property the ideal place for a hobby farm; bring the chooks, a goat or a horse or two and imagine how much fun the kids will have growing up in a place like this.

There's no beating around the bush here â## this idyllic acreage is on the market and waiting for you. All you need to do is pick up the phone, call today and arrange an inspection â## you'll be glad you did.

### Features;

- 3 bedrooms

**TYPE:** Sold

**INTERNET ID:** 5P14196

### SALE DETAILS

**\$675,000**

### CONTACT DETAILS

**Leah Elford**  
0428 295 952

- Built-in robes
- Exposed beams in the lounge and dining room
- Air conditioner
- 2.13 hectares (approx 5.3 acres)
- Fenced block
- Dam
- Town water
- Detached double garage and workshop
- 10 minutes from Kempsey CBD
- Tar road frontage

Disclaimer: The information contained in the advertising of this property is based on information provided to the Property Manager, and the landlord and Property Manager expressly disclaim any liability arising therefrom.

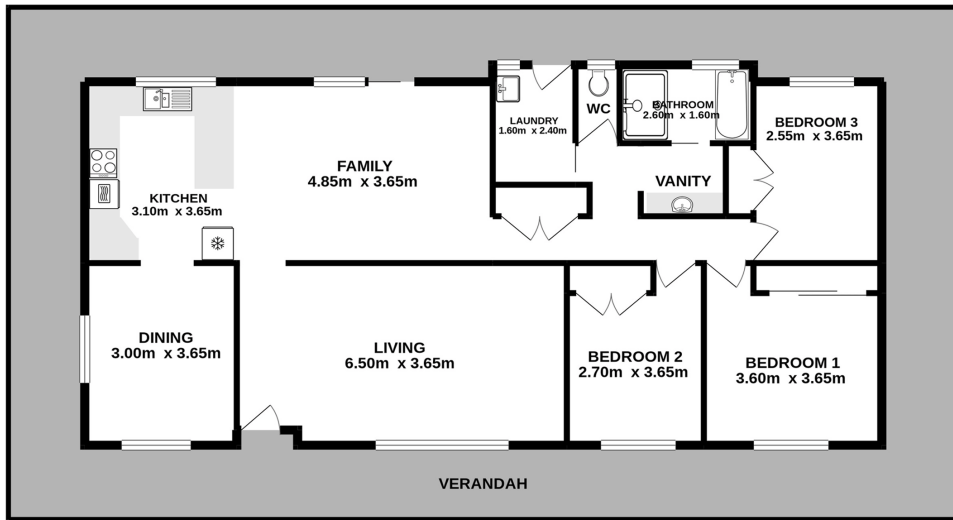
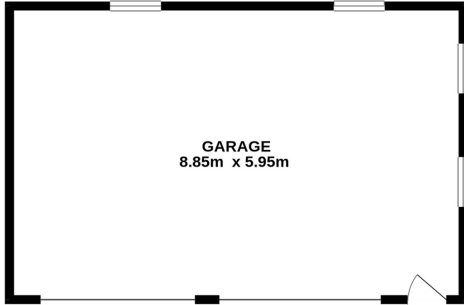
The accuracy of the information cannot be guaranteed, and the prospective tenant should make their own enquiries and form their own judgement as to these matters.

- Land Area 2.15 hectares
- Bedrooms: 3
- Bathrooms: 1
- Double garage









## 30 Bushland Drive Yarravel

Measurements are approximate. Not to Scale. For illustrative purposes only.

TOTAL FLOOR AREA : 116.0 sq.m. approx.  
TOTAL GARAGE AREA: 52.65 sq. m approx