



## 5 Satinwood Crescent, KEW, NSW 2439

### Spacious Light Filled Home With Scenic View

Situated in an elevated position in the sought after 'Links Estate' is this immaculately presented modern family home.

Just minutes to Kew Country Club, Corner Store Cafe and the Royal Hotel.

An easy drive to Lakewood Shopping Centre,

10 minutes to Laurieton and 30 minutes to Port Macquarie Town Centre.

Approx 15 -20 minutes to the beautiful beaches of North Haven & Dunbogan.

- Master bedroom with walk in wardrobe and ensuite
- Three large bedrooms with built ins
- Bright main bathroom with large bathtub and separate toilet
- Open plan living, dining and stylish kitchen areas

**TYPE:** Sold

**INTERNET ID:** 5P21272

**SALE DETAILS**

**Contact Agent**

**CONTACT DETAILS**

**Charles Milburn**  
0412 257 057

- Relaxing media/lounge room
- Fabulous covered outdoor entertaining/dining area with great view
- Covered outdoor lounge overlooks private rear lawn and garden
- Side access on both sides of house
- Double remote controlled garage with internal access
- Ducted air conditioning throughout the home

Property Details:

Council Rates: \$2750 pa

Land Size: 689sqm (approx)

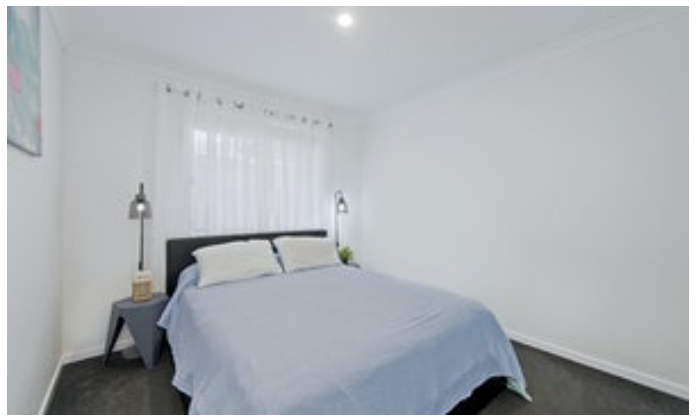
Rental Potential: \$600 per week

**DISCLAIMER:** The information contained in the advertising of this property is based on information provided to the agents, and the vendor and agents expressly disclaim any liability arising therefrom. The accuracy of the information cannot be guaranteed, and prospective purchasers should make their own enquiries and form their own judgement as to these matters.

Other features: Area Views, Close to Schools, Close to Shops, Close to Transport

- Land Area 689.00 square metres
- Bedrooms: 4
- Bathrooms: 2
- Double garage







Kew Golf Club Location Shot



Kew Golf Club Location Shot

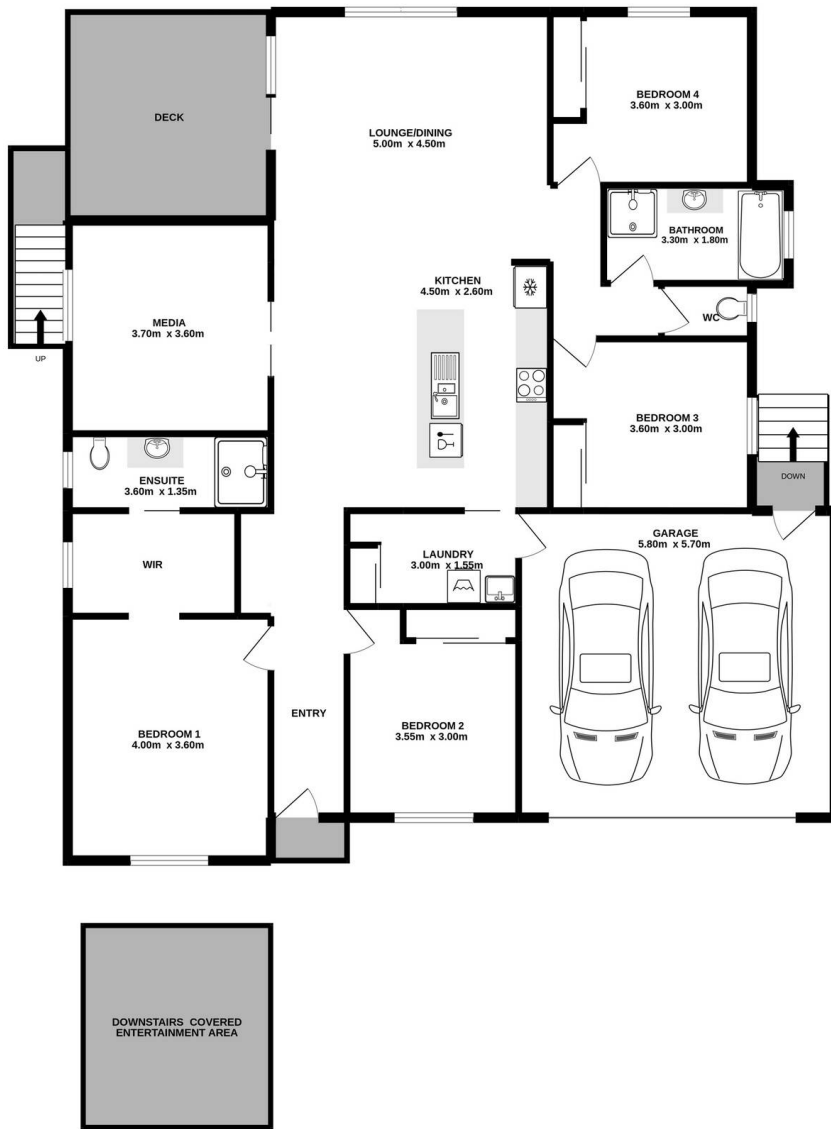


Lakewood Jetty & Boat Ramp Location Shot





Lakewood Woolworths Complex Location Shot



**5 Satinwood Crescent Kew** TOTAL FLOOR AREA : 168.8 sq.m. approx.  
Measurements are approximate. Not to scale. Illustrative purposes only.  
Open2view does not take any responsibility for any information supplied.