

25 Kinchela Street, GLADSTONE, NSW 2440

Home Is Where The Heart Is

Located right in the heart of Gladstone, 25 Kinchela Street is now on the market and looking for its new owners!

The Federation style residence has loads of character. With three spacious bedrooms - two of which have French doors opening onto wide verandas - an eat-in kitchen (the heart of any home), two bathrooms, timber flooring and rear deck overlooking the backyard.

Lush gardens surround this ample 961sqm block offering a tranquil and picturesque escape where you can sit back and relax on the verandas or rear deck, enjoying a quiet cuppa or a good book,. Esplanade river frontage to the majestic Macleay River offers a lifestyle envied by many and being so close, you might want a boat to enjoy some leisure activities on the water. And when you have your boat, the added bonus of rear lane access means you have good space to store it.

Being located in the hub of the Gladstone village and with the property zoned RU5 Village, this offers yet more opportunities and possibilities (STCA) with the Memorial Park, local markets, Gladstone Public Swimming Pool, Heritage Hotel, plus several boutique shops and cafes all within walking distance.

The particulars contained herein are supplied for information only and shall not be taken as a representation in any respect on the part of the vendor or its agent. Interested parties should contact the nominated person or office for full and current details.

TYPE: Sold

INTERNET ID: 5P21458

SALE DETAILS

Price Guide \$620,000 - \$650,000

CONTACT DETAILS

Leah Elford
0428 295 952

Gladstone village really is the place to be and this home could be the perfect start for you and your family to be a part of this idyllic lifestyle.

Features include;

- Front and side verandas
- Rear deck
- Polished timber flooring
- Three bedrooms
- Built-in robes in 2 bedrooms
- French doors onto veranda in 2 bedrooms
- Gas stove
- Two bathrooms
- Bathtub and shower
- Lush gardens
- Rear lane access
- Fenced yard
- Esplanade river frontage

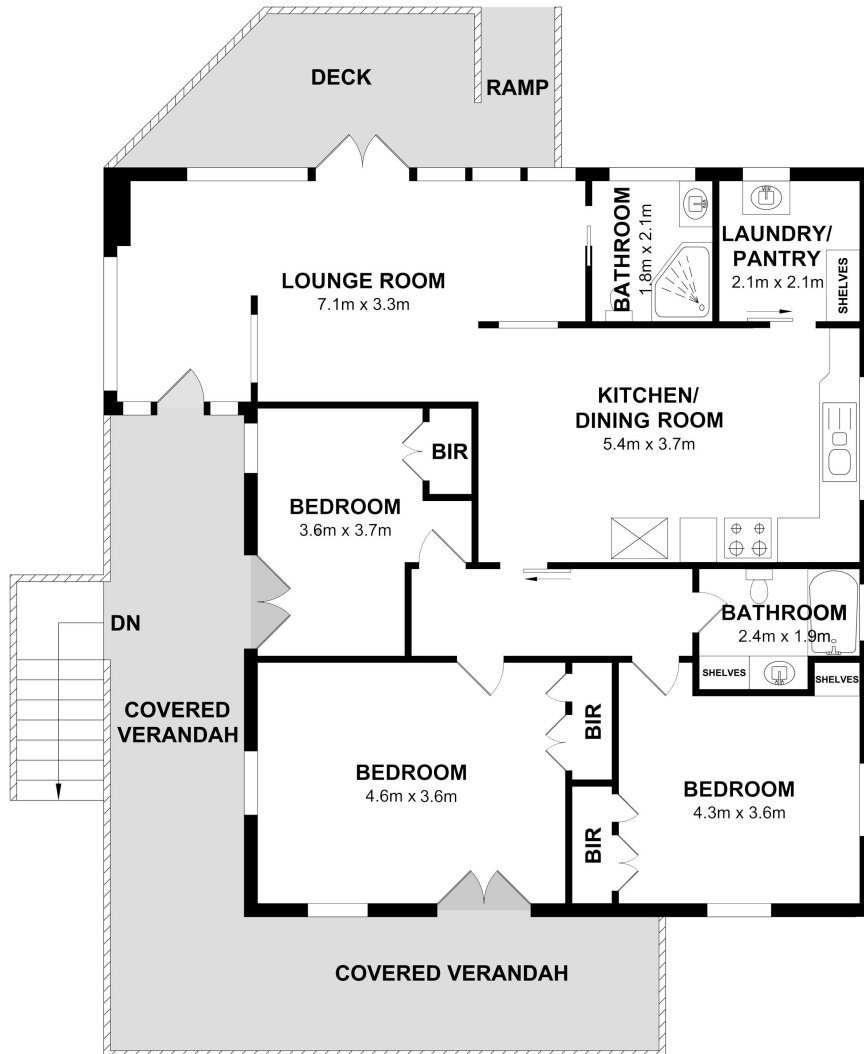
DISCLAIMER: The information contained in the advertising of this property is based on information provided to the agents, and the vendor and agents expressly disclaim any liability arising therefrom. The accuracy of the information cannot be guaranteed, and prospective purchasers should make their own enquiries and form their own judgement as to these matters.

Other features: Polished Timber flooring

- Land Area 961.00 square metres
- Bedrooms: 3
- Bathrooms: 2







25 Kinchela St, Gladstone

 TOTAL FLOOR AREA : 107.3 sq.m. approx.
 Measurements are approximate. Not to scale. Illustrative purposes only.
 Open2view does not take any responsibility for any information supplied.