



## 12 Hungerford Place, BONNY HILLS, NSW 2445

### Well Designed Level Bonny Hills Home

Looking for a quality home set within one of the most popular suburbs in the Camden Haven, Bonny Hills, then this one is a must see! Built in 2006 by local builder Hastings Valley Homes this home has the perfect layout with multiple living areas, fantastic outdoor entertaining area and yard, you are sure to be impressed with all that is on offer. Great sized bedrooms, side access open plan living, dining and kitchen zones plus much more. The home features:

- Open plan living, dining & kitchen zones
- Separate formal lounge room
- Master bedroom with walk in wardrobe & ensuite
- Three additional generous sized bedrooms
- Large main bathroom with separate toilet
- Double garage with internal access plus 3m of side access
- Fully fenced rear yard with veggie patches

**TYPE:** Sold

**INTERNET ID:** 5P21646

**SALE DETAILS**

**\$919,000**

**CONTACT DETAILS**

**Andrew Stokes**  
0401 315 832

- Only 850m to the pristine sands of Rainbow Beach
- A short 20 minute to Regional hub of Port Macquarie

Property Details:

Council Rates: \$2,870 pa approx

Land Size: 659.4 sqm approx

Rental Potential: \$600 - \$620 per week

DISCLAIMER: The information contained in the advertising of this property is based on information provided to the agents, and the vendor and agents expressly disclaim any liability arising therefrom. The accuracy of the information cannot be guaranteed, and prospective purchasers should make their own enquiries and form their own judgement as to these matters.

Other features: Carpeted, Close to Shops, Close to Transport, Couples, Downsizing, Fireplace, Formal Lounge, Garden

- Land Area 659.00 square metres
- Bedrooms: 4
- Bathrooms: 2
- Double garage
- Ensuite

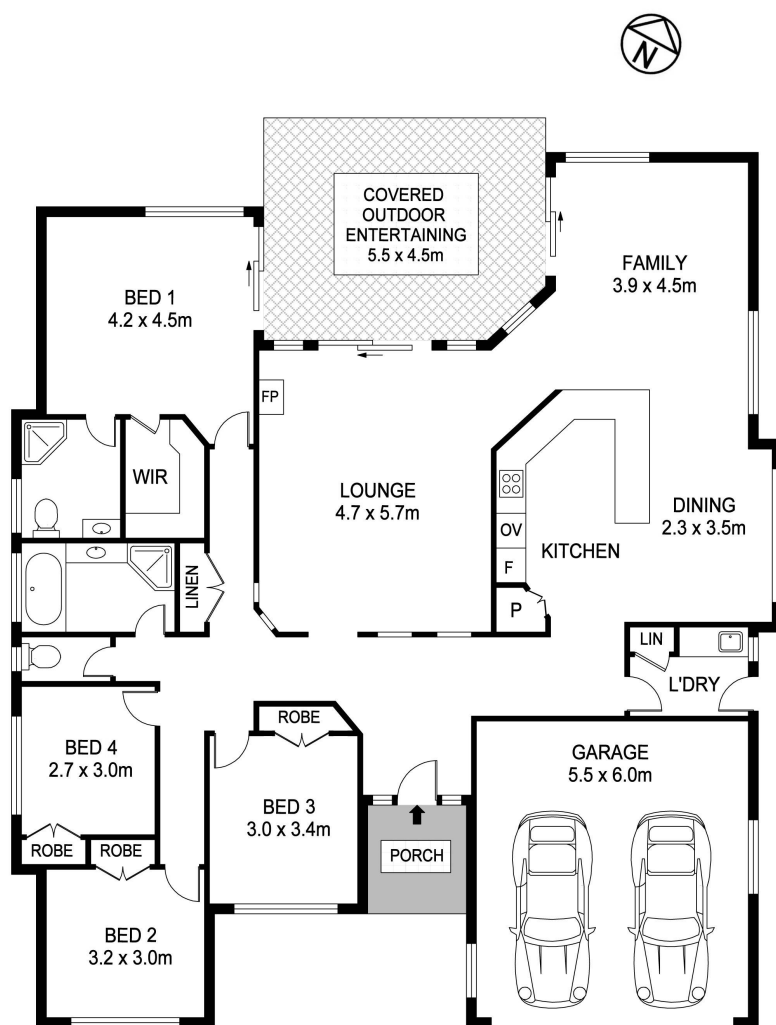












**12 Hungerford Place, Bonny Hills**

INTERNAL : 206.6m<sup>2</sup>  
ENTERTAINING AREA : 24.7m<sup>2</sup>

DISCLAIMER: PLANS SHOWN ARE FOR MARKETING PURPOSES ONLY. ALL DIMENSIONS ARE APPROXIMATE AND NOT TO SCALE. THEY ARE SUBJECT TO ERRORS AND INACCURACIES. AND NO LIABILITY WILL BE ACCEPTED. INTERESTED PARTIES SHOULD MAKE THEIR OWN INQUIRIES.

**Elders** LIFESTYLE GROUP