



7 The Point, TURA BEACH, NSW 2548

Point Of View

This is the one you didn't know was here. Absolutely prime location at 7 The Point, Tura Beach.

An architect-designed, energy-efficient home with endless entertainment possibilities. Sitting right above Dolphin Cove, with uninterrupted views north up the beach, to Bourda Island and National Park.

Designed by the owner with renowned Canberra architect John Firth, the home was inspired by lifestyles in the south of France and Spain - terracotta, open to summer breezes, able to be cooled or heated with minimal energy use. The garden planted with aromatic herbs, olives, spruce and native echoes that design, with water efficient reticulation installed. Every day can feel like a holiday; artifacts from the owner's extensive travels are embedded into the home; the local birds know this garden.

The house cascades gently down the slope, with a magnificent master bedroom with ensuite and private deck upstairs (surf check anyone).

On the entry level are two large bedrooms for family or guests, with ample storage and two bathrooms, including a generous spa bath.

A large open kitchen works well for entertaining or a quiet cup of tea at the kitchen island. A butlers pantry / laundry is easily accessed - or easily hidden from view.

The particulars contained herein are supplied for information only and shall not be taken as a representation in any respect on the part of the vendor or its agent. Interested parties should contact the nominated person or office for full and current details.

TYPE: For Sale

INTERNET ID: 60P0439

SALE DETAILS

\$1,400,000

CONTACT DETAILS

,
Greg Coman
0412 849 058

Overlooking the garden with views out to sea is the fourth bedroom: a perfect teen retreat, extra guest bedroom, or home office.

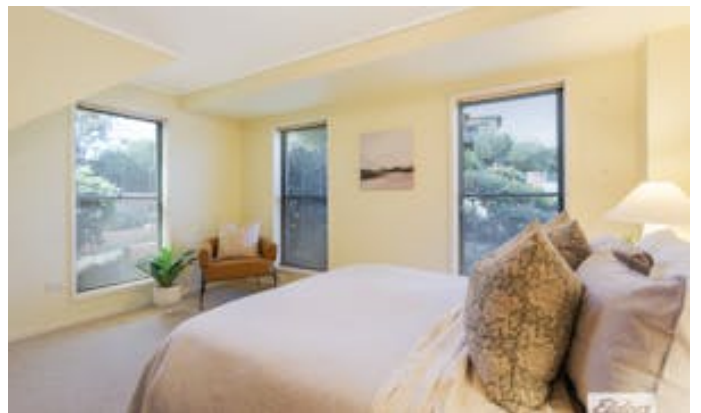
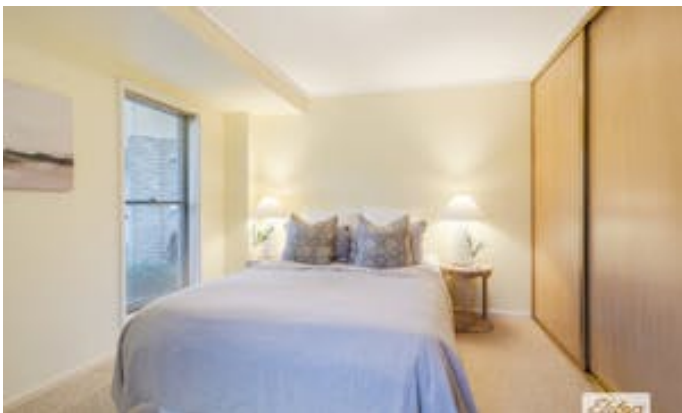
Out the back gate is the coastal reserve and Dolphin Cove beach access, with easy walking to the Dolphin Cove Headland, the Tura Beach Rock-pool or all the way to the way up the beach.

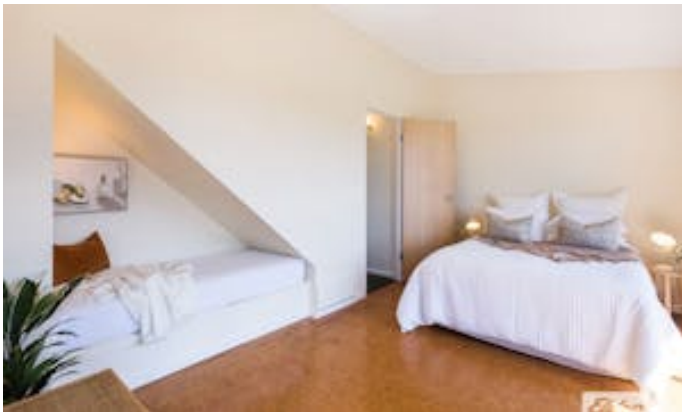
A double garage, with remote, provides ample storage for all your "coastal lifestyle toys" whether it's surfboards, golf clubs, camping, fishing or snorkeling gear, with a simple workshop set up and room for two cars.

First time on the market, absolute reserve frontage to the beach: this won't last long.

- Land Area 600.40 square metres
- Bedrooms: 4
- Bathrooms: 3
- Car Parks: 2
- Double garage





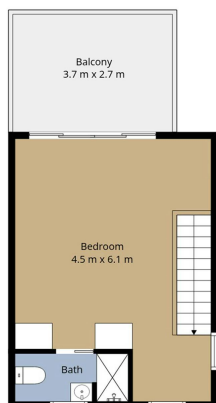




The particulars contained herein are supplied for information only and shall not be taken as a representation in any respect on the part of the vendor or its agent. Interested parties should contact the nominated person or office for full and current details.



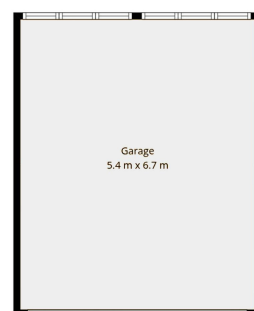
Floor 1



Floor 3



Floor 2



7 The Point TURA BEACH

TOTAL: 206 m²

FLOOR 1: 19 m², FLOOR 2: 159 m², FLOOR 3: 28 m²
EXCLUDED AREAS: STORAGE UNDER HOUSE: 17 m², DECK: 33 m², PORCH: 10 m²,
GARAGE: 37 m², BALCONY: 11 m², WALLS: 20 m²

Measurements Are Approximate And Should Be Used As a Guide Only.

