



## 8 Esther Street, TATHRA, NSW 2550

### Family Living with Income Potential – All on the Flat in Tathra

Perfectly positioned in one of Tathra's most sought-after pockets, this beautifully renovated double brick home offers the ultimate combination of lifestyle and investment flexibility – just an easy stroll to the beach, caf  s and restaurants.

The main residence is light-filled and welcoming, with high ceilings enhancing the sense of space throughout. A thoughtfully designed kitchen with a generous butler's pantry creates a highly functional cooking zone that flows seamlessly into the open dining and living areas – ideal for family life and entertaining.

Accommodation in the main home is exceptional, featuring three oversized bedrooms, each with its own private bathroom – a rare and highly desirable feature. The main bedroom suite is further complemented by a connected fourth bedroom or office, perfect for a nursery, study or private retreat.

Adding significant versatility is the fully self-contained and furnished two-bedroom unit. Ready for immediate use, it offers outstanding options – long-term rental income, the flexibility of Airbnb, or comfortable accommodation for extended family or guests.

**TYPE:** For Sale

**INTERNET ID:** 60P0472

**SALE DETAILS**

**\$1,799,000**

**CONTACT DETAILS**

,

**Greg Coman**  
0412 849 058

Practicality hasn't been overlooked, with three garages plus additional space for two boats, caravans or trailers. NBN connected to the premises ensures fast and reliable internet for work or leisure.

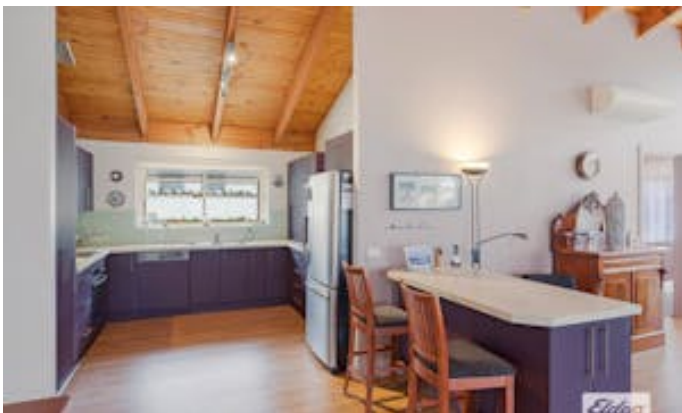
Set on the flat in Tathra â## a location always in high demand â## this is a rare opportunity to secure a quality family home with built-in income potential, all wrapped into one impressive lifestyle property.

If you've been searching for space, flexibility and coastal convenience, this one delivers it all.

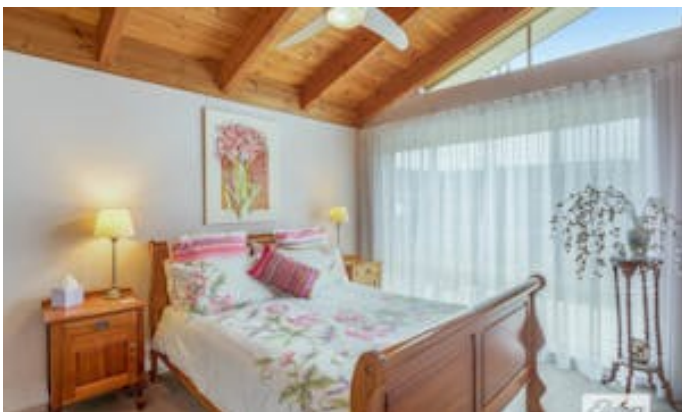
Other features: Heating, Kitchenette

- Land Area 600.00 square metres
- Bedrooms: 6
- Bathrooms: 4
- Car Parks: 2
- 3 car garage















8 Esther Street

TOTAL: 120 SQM  
Ground Floor: 120 SQM, 1st Floor: 170 SQM  
EXCLUDED: DRIVE, CARPARK, 40 SQM, COVERED PATIO, 20 SQM, PORCH, 20 SQM





Ground Floor



1st Floor

## 8 Esther Street TATHRA

**TOTAL: 326 m2**  
 Ground floor: 147 m2, 1st floor: 179 m2  
 EXCLUDED AREAS: GARAGE: 46 m2, COVERED PATIO: 30 m2, PORCH: 23 m2,  
 BALCONY: 79 m2, WALLS: 24 m2

Measurements Are Approximate And Should Be Used As a Guide Only.

