



131 Edwardes Terrace, PORT VICTORIA, SA 5573

SEAVIEWS & SUNSETS Everyday

Brick Veneer 3 Bedroom Home Overlooking Golf Course & The Sea with Wardang Island on the Horizon. An adaptable Open Living floor plan with big picture windows all situated on an easy care yard, low maintenance home Ideal for Retirement OR Holiday Living.

Double garage + Boat shed, Solar Panels, Air conditioning & Offered Furnished. within a short walk to the boat-ramp.

A spotless presentation from house proud owners.

Inspection Will Impress.

- Land Area 763.00 square metres
- Building Area: 12.00 square metres
- Bedrooms: 3
- Bathrooms: 1
- Car Parks: 2
- Double garage
- Single carport
- Air Conditioning

TYPE: Sold

INTERNET ID: 61P0623

SALE DETAILS

\$399,999

CONTACT DETAILS

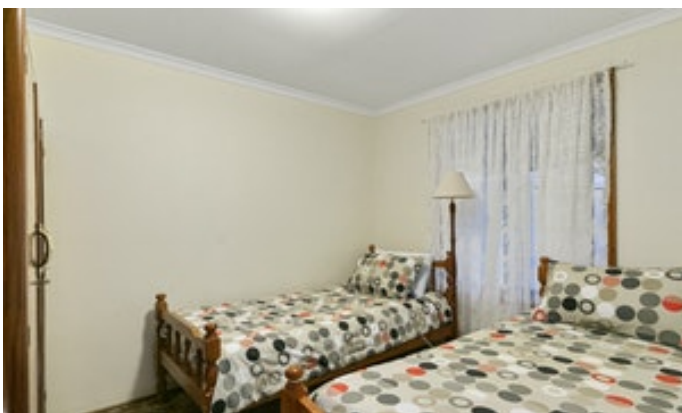
Elders Real Estate Yorke Peninsula

The Grainstore, 5 Main Street

Port Vincent, SA
08 8853 7018

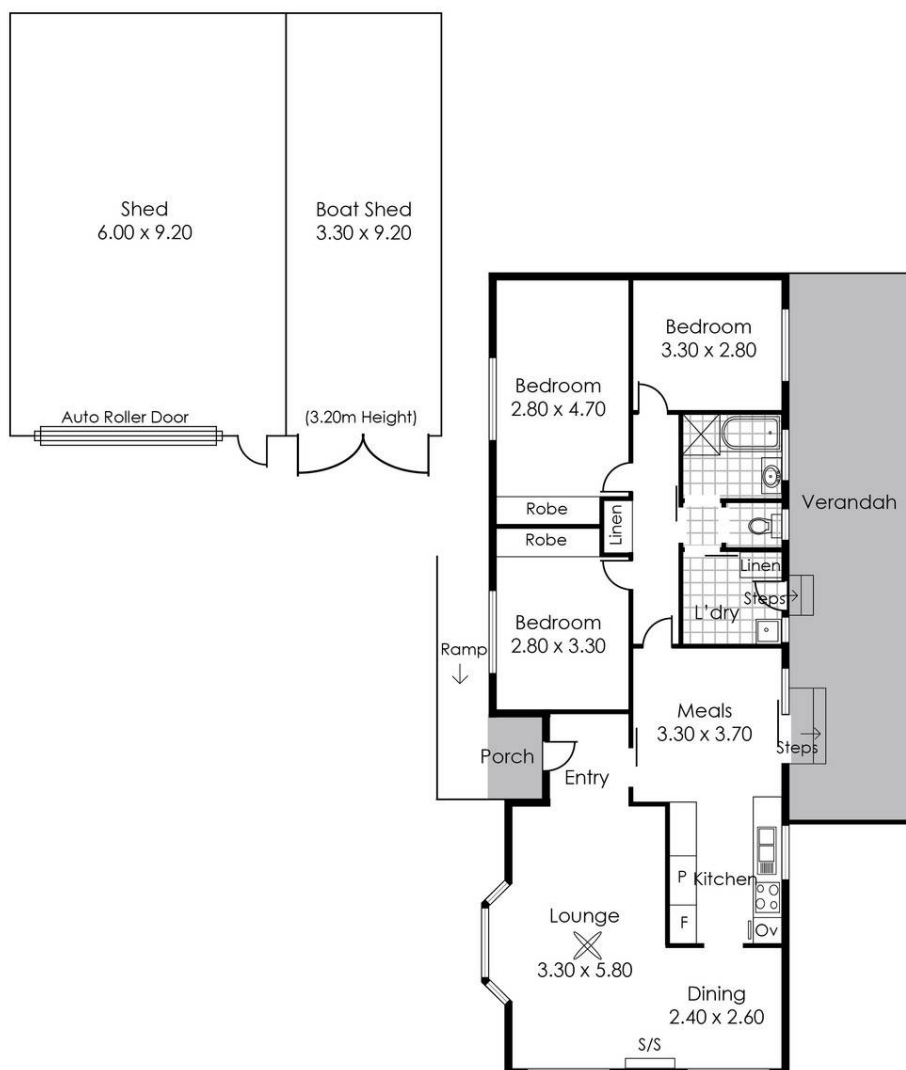
Len Easther
0418 373 620











131 EDWARDES TERRACE, PORT VICTORIA

Living:	110.87 sqm
Porch:	2.00 sqm
Verandah:	33.60 sqm
Sheds:	85.56 sqm
Total:	232.03 sqm

This Drawing is for illustration purposes only.
All measurements are internal and approximate.
Details intended to be relied upon should be
independently verified.
Produced by Open2view.com



**Yorke
Peninsula**