

35 Hosking Road, TIDDY WIDDY BEACH, SA 5571

Quality Home with a View

First available inspection Saturday 12 March. Contact Agent to Register.

Situated to the elevated section of Hosking Road, this is a truly unique offering which will appease a multitude of buyer categories. A seaview and a quality standard of accommodation, whichever way you look at it, this will be a fine addition to your portfolio.

Overall, the property offers 4 bedrooms, 3 bathrooms, 2 loungerooms and 2 kitchen / dining areas.

The layout enables the residence to be occupied by two separate parties concurrently, each with separate access and this has previously been operated as a 'B&B' style holiday rental with the owner living onsite in the front. Alternatively, a family or someone who enjoys having guests would see incredible value here.

Naturally, with a view like this you will spend a great deal of time out on the front deck. The same view can be appreciated from the main kitchen, lounge and master bedroom. A central courtyard is enveloped by the house which offers a shaded and sheltered

The particulars contained herein are supplied for information only and shall not be taken as a representation in any respect on the part of the vendor or its agent. Interested parties should contact the nominated person or office for full and current details.

TYPE: Sold

INTERNET ID: 61P1064

SALE DETAILS

480,000

CONTACT DETAILS

Elders Real Estate Yorke Peninsula

The Grainstore, 5 Main Street

Port Vincent, SA
08 8853 7018

Matt Easter
0409 011 212

alternative for outdoor entertaining in need.

Noteworthy particulars include ensuite bathrooms to 2 bedrooms, new carpet to the bedrooms, walk in robe to master, split system A/C units with ceiling fans, wood combustion heater, gas stove and dishwasher to main kitchen.

Motorised rollerdoor with side and rear fencing will allow secure enclosure for pets. Low maintenance yard and gardens.

Tiddy Widdy Beach is a great seaside locality 2 mins drive from the Ardrossan township where key services include Supermarket, Pharmacy, Medical, Hospital & Aged Care.

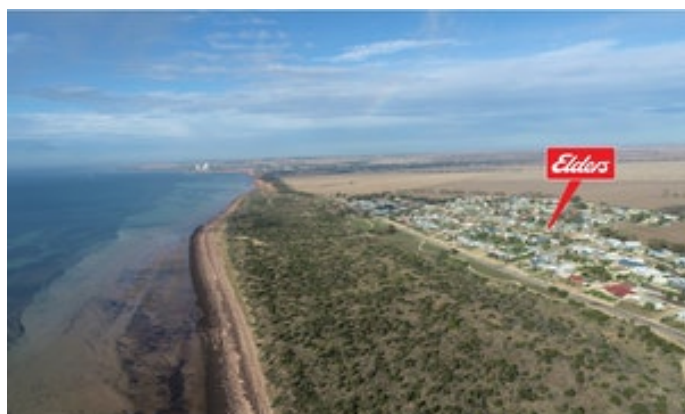
An active local progress group in Tiddy Widdy Beach sees regular community events in the parkland with new facilities and playground being constructed this year.

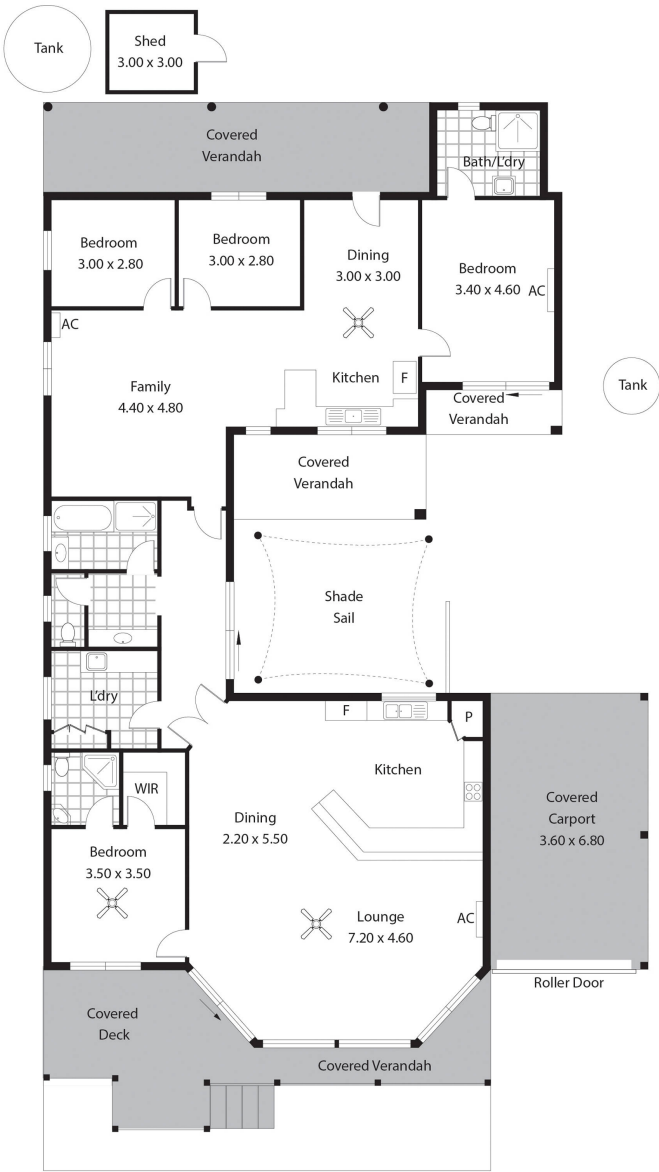
Other features: Area Views, Carpeted, Heating, Kitchenette, Ocean Views, Roller Door Access, Water Views

- Land Area 696.00 square metres
- Bedrooms: 4
- Bathrooms: 3
- Single garage
- Air Conditioning
- Ensuite
- Floorboards









Living:	208.23sqm
Verandah/Deck:	65.02sqm
Carport/Shed:	33.48sqm
Total:	306.73sqm

This Drawing is for illustration purposes only.
All measurements are internal and approximate.
Details intended to be relied upon should be
independently verified.
Produced by Open2view.com

