



18 Jetty Road, PORT JULIA, SA 5580

Auction Wed 20th On Line End of the Rainbow is Right HERE !

One of the scarcest parcels of seafront land in the State, certainly Yorke Peninsula !

Two storey beach house, Utilize now then Re-clad & Renovate right on the waterfront. The location says it all, Put yourself in the picture.

Lens Note: You generally have to inherit a block along this stretch. There are second & third generations that know they have one of the finest coastal locations on Yorke. It is your opportunity now to purchase for yourself, your children & grandchildren.

Opening Bid Guide: \$480,000

Port Julia, one of the best kept secrets on Yorke Peninsulas east coast & within 2 hrs drive from Adelaide.

Other features: Beach Front, Car Parking - Surface, High Clearance, Ocean Views, Openable Windows, Water Front

- Land Area 211.00 square metres
- Bedrooms: 3

The particulars contained herein are supplied for information only and shall not be taken as a representation in any respect on the part of the vendor or its agent. Interested parties should contact the nominated person or office for full and current details.

TYPE: Sold

INTERNET ID: 61P1081

AUCTION DETAILS

7:00pm, Wednesday April 20th, 2022

CONTACT DETAILS

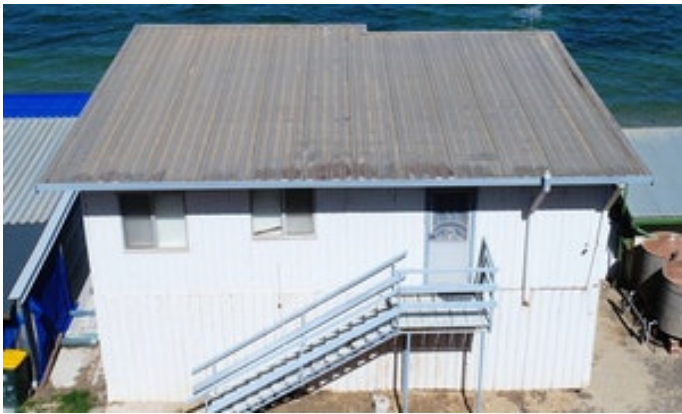
Elders Real Estate Yorke Peninsula

The Grainstore, 5 Main Street

Port Vincent, SA
08 8853 7018

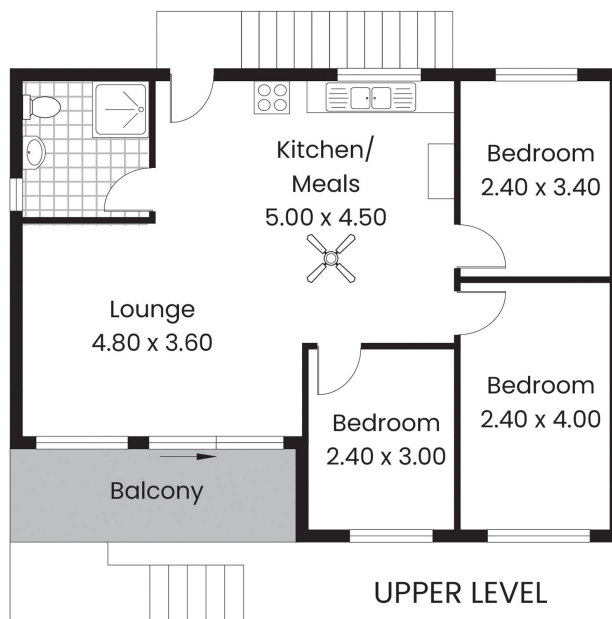
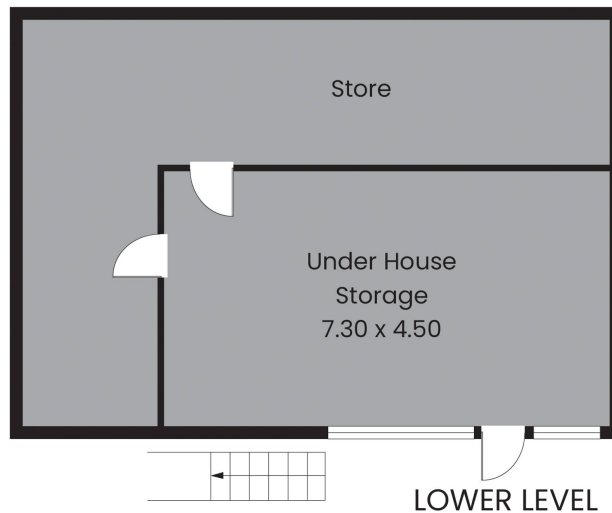
Len Easther
0418 373 620

- Bathrooms: 1
- Car Parks: 1









Living:	134.02sqm
Balcony:	7.27sqm
Total:	141.29sqm

This Drawing is for illustration purposes only.
All measurements are internal and approximate.
Details intended to be relied upon should be
independently verified.
Produced by Open2view.com



**Yorke
Peninsula**