



## 18 Belmont Crescent, MAITLAND, SA 5573

### Affordable Home with a View

Owner Occupier or Investor / Landlord? This property will appeal to all buyer categories. Yorke Valley views looking east.

A solid double brick structure with a floor plan which would allow for some reconfiguration if required (i.e WIR & ensuite stca). Layout offers 4 bedrooms, 1 bathroom, with shower room to master bedroom. Good size open lounge with separate dining, kitchen, laundry and sunroom. Existing kitchen and bathroom are functional, though will offer renovation opportunity in the future.

Big undercover outdoor patio to the rear. Carport and double bay shed with power. Elevated rear aspect has sections of gardens.

Notable features include wood combustion heater, split system A/C and a new hot water system.

- Land Area 1,055.00 square metre
- Bedrooms: 4
- Bathrooms: 1

**TYPE:** Sold

**INTERNET ID:** 61P1087

**SALE DETAILS**

**Under Contract**

**CONTACT DETAILS**

**Elders Real Estate Yorke Peninsula**

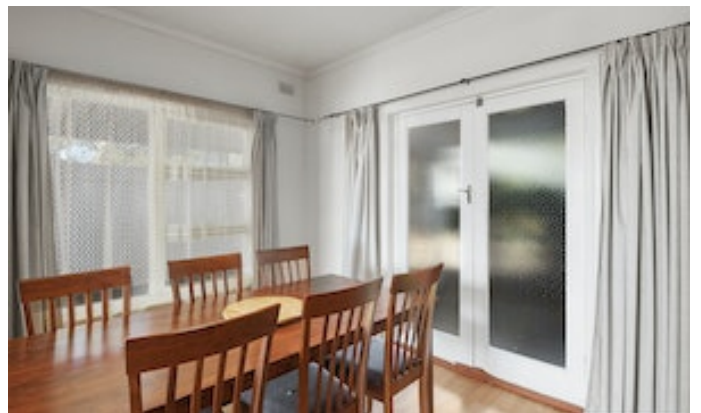
The Grainstore, 5 Main Street

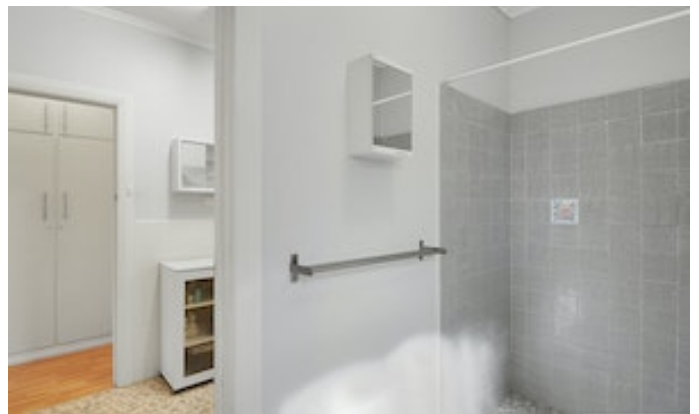
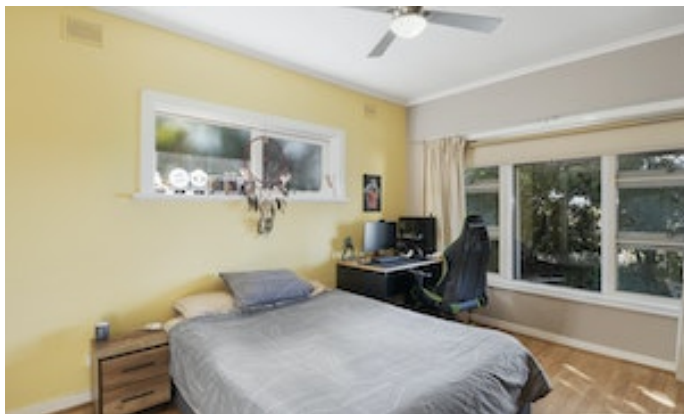
Port Vincent, SA  
08 8853 7018

**Matt Easter**  
0409 011 212

- Double garage
- Double carport

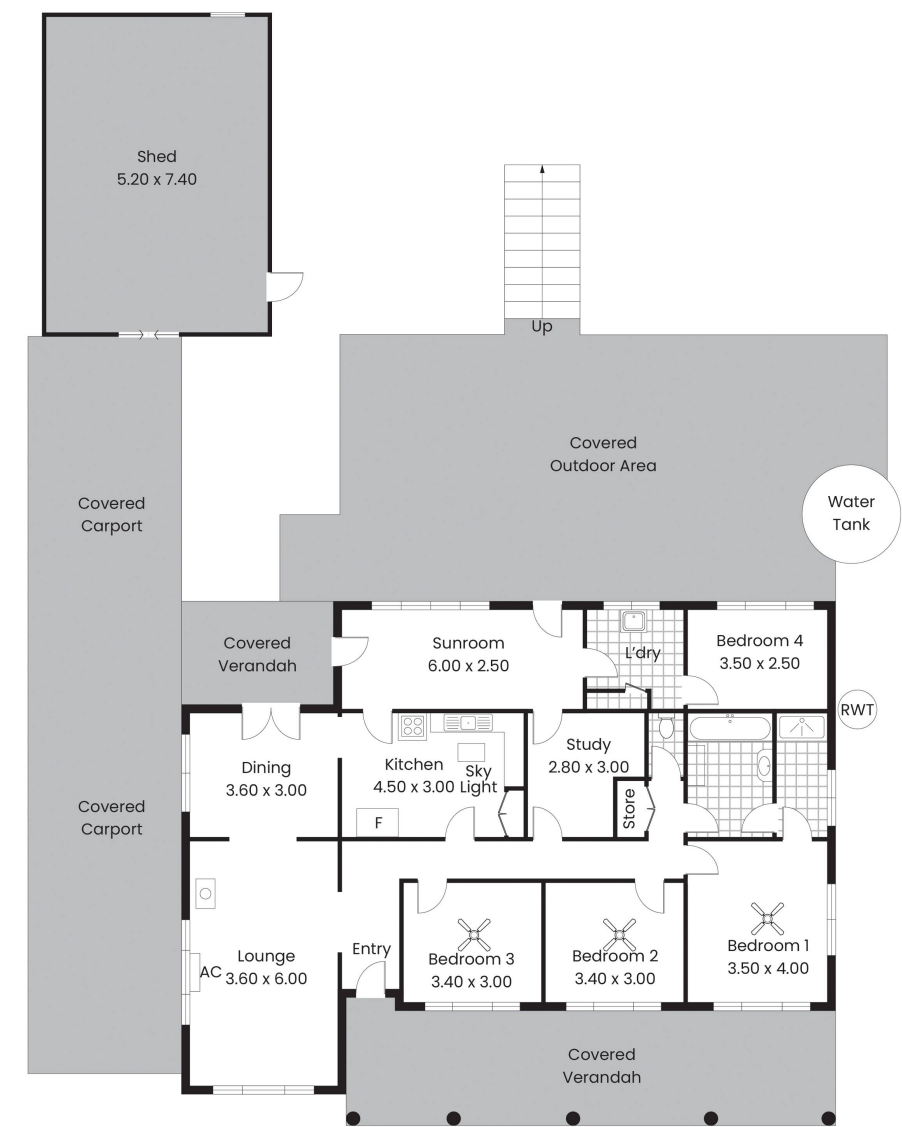












Living:	153.10sqm
Verandah/Carport	180.10sqm
Shed:	38.48sqm
Total:	371.68sqm

This Drawing is for illustration purposes only.  
All measurements are internal and approximate.  
Details intended to be relied upon should be  
independently verified.  
Produced by Open2view.com

