



9 Moores Drive, HARDWICKE BAY, SA 5575

Huge Block - Large Comfortable Home

A generous 1,495sqm allotment improved with a well-maintained 2010 steel-frame transportable home, offering space, comfort and plenty of opportunity.

The home features a large floor plan with four bedrooms and two bathrooms, including a master suite with walk-in robe and ensuite. The expansive open-plan kitchen, dining, and living area forms the centre to the home and is complemented by a second living or rumpus room to the western end-perfect for family flexibility or guest overflow.

A large decking area provides the ideal space for outdoor entertaining.

Exciting features include mains water, rooftop solar, instant gas hot water, gas cooking, dishwasher, and split system air conditioning.

Endless scope for further improvements, including that big custom built shed you've been yearning for (stcc).

- Land Area 1,495.00 square metre

TYPE: For Sale

INTERNET ID: 61P1331

SALE DETAILS

\$485k - \$530k

CONTACT DETAILS

Elders Real Estate Yorke Peninsula

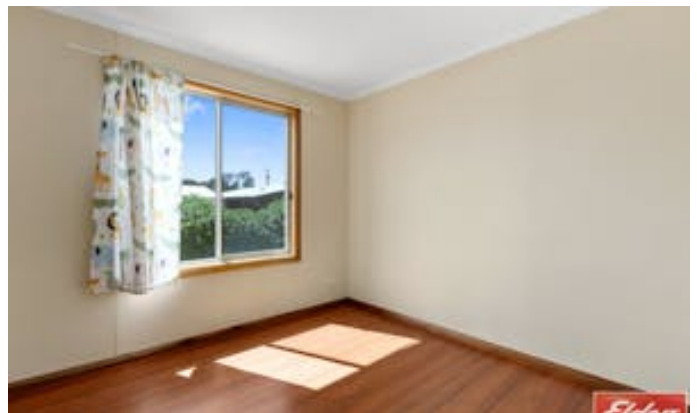
The Grainstore, 5 Main Street

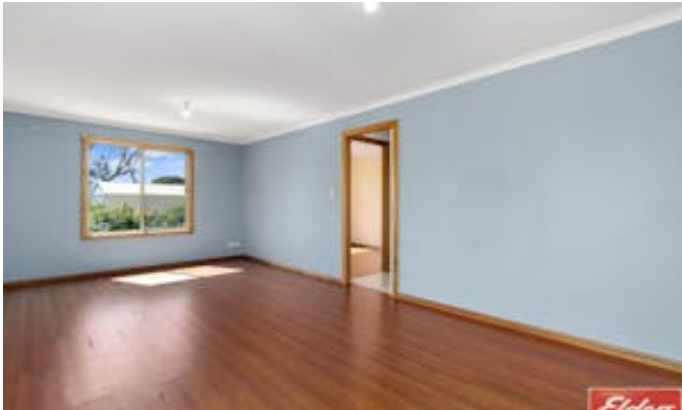
Port Vincent, SA
08 8853 7018

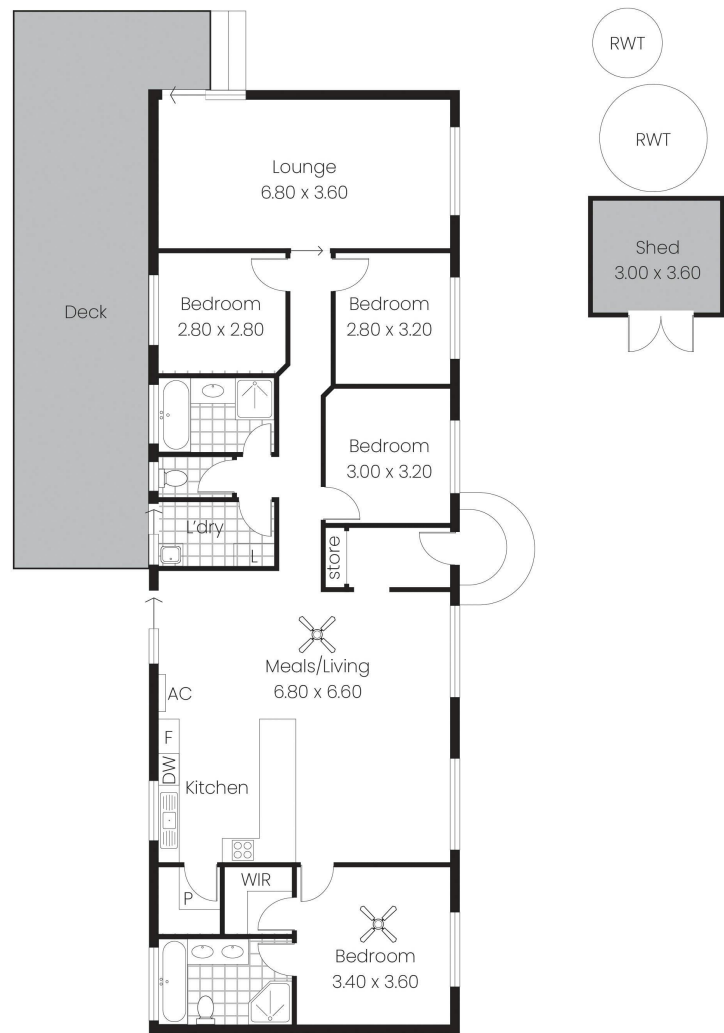
Matt Easter
0409 011 212

- Bedrooms: 4
- Bathrooms: 2









Living:	133.79sqm
Deck:	38.17sqm
Shed:	10.80sqm
Total:	182.76sqm

This Drawing is for illustration purposes only.
All measurements are internal and approximate.
Details intended to be relied upon should be
independently verified.
Produced by Open2view.com