



359 Burton Avenue, KYNETON, VIC 3444

Country Feel, Town Convenience - 18.5 Acres* with Endless Possibilities

7.49 hectares, 18.50 acres

Elders Real Estate is pleased to present 359 Burton Avenue, Kyneton - a highly appealing lifestyle opportunity set on approximately 7.5 hectares* (18.53 acres*), offering space, flexibility and future potential just moments from the Kyneton township.

This is the perfect balance for those seeking space and freedom, while remaining within easy reach of town conveniences, schools and the Kyneton train station for a straightforward Melbourne commute.

Set on an elevated parcel with three road frontages, the land offers excellent access and flexibility, well suited to those looking to establish a lifestyle property with room for a pony, hobby pursuits or simply space to enjoy.

The residence is a classic Victorian weatherboard home, characterised by a central hallway, original lining boards to the ceilings and a traditional bullnose veranda - offering a gentle nod to its heritage and scope for thoughtful renovation. Positioned to take in a peaceful outlook across surrounding farmland, the home enjoys beautiful morning light through the front rooms and captures stunning sunsets to the rear.

TYPE: For Sale

INTERNET ID: 63P0179

SALE DETAILS

by Expression of Interest

CONTACT DETAILS

Kyneton
120-122 Piper Street
Kyneton, VIC
03 5422 7407

Jodie Alcaraz
0455 331 891

Comfortable as is, it presents an exciting opportunity to renovate, extend or establish a new home (STCA), adding value over time.

Infrastructure is well established, highlighted by a substantial new shed with concrete floor and power, complemented by additional shedding to support storage, projects or lifestyle use.

Water is well catered for, with a large dam supported by bore and rainwater supply.

A property that offers genuine potential in a tightly held and highly convenient location, 359 Burton Avenue presents an excellent opportunity to secure space, improve over time and create a lifestyle tailored to your needs - all within minutes of Kyneton.

Key Features

- 7.5 hectares (18.53 acres*) with three road frontages
- Elevated position with excellent access and flexibility
- Victorian weatherboard home with central hallway and front veranda
- Scope to renovate, extend or establish a new home (STCA)
- Substantial new shed with concrete floor and power
- Additional shedding and improvements
- Large dam, bore and rainwater storage
- Close to Kyneton township, schools and train station
- Ideal for lifestyle buyers, hobby pursuits or a pony

Expressions of Interest Closing 3 June 2026 at 4PM (Unless Sold Prior)

*denotes approx.

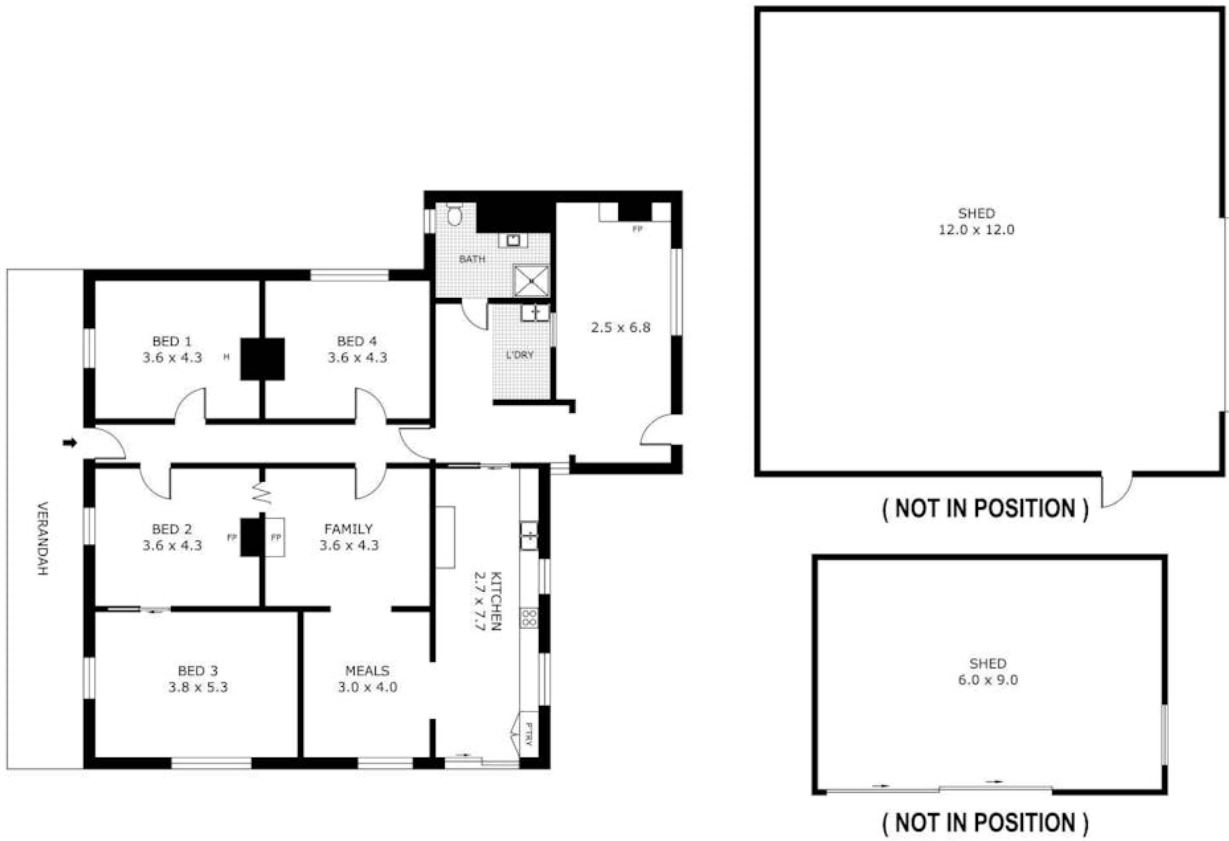
- Land Area 7.486684 hectares
- Bedrooms: 4
- Bathrooms: 1

HOMESTEAD

Bedrooms	4
Bathrooms	1







**359 Burton Avenue,
KYNETON**

Residence	- 173.4 m ²
Verandah	- 26.1 m ²
Shed	- 198.0 m ²
Total	- 397.5 m ²



Scale in metres. Indicative only. Dimensions are approximate. All information contained herein is gathered from sources we believe to be reliable. However we cannot guarantee its accuracy and interested parties should rely on their own enquiries.