



## 880 Glenelg Highway, WESTMERE, VIC 3351

### Versatile Country Property on 6 Titles – 6000sqm Block

Set on approximately 6000sqm across 6 separate titles, this solid 3-bedroom double-brick home is a rare find in the peaceful township of Westmere. Offering space, potential, and township zoning, it's just 12.5km to Lake Bolac, 85km to Ballarat, and 50.5km to Ararat.

#### Outside Features:

Powered shed/garage plus sundry shedding

3 water tanks, bore water available

Side access and chook yard

Potential for subdivision (STCA)

#### Inside Features:

3 bedrooms

Updated bathroom with shower

**TYPE:** For Sale

**INTERNET ID:** 64P4128

#### SALE DETAILS

**\$320,000 - \$350,000**

#### CONTACT DETAILS

**Ararat**

167 Barkly Street  
ARARAT, VIC  
03 5352 4338

**David Jennings**  
0417 371 872

Lounge with wood heating and polished floorboards

Kitchen with gas cooktop, electric oven, and dining space

Rear rumpus room â## ready for you to complete and personalise

With its generous block size, multiple titles, and convenient location, this property offers flexibility â## whether you're seeking a quiet country retreat, a permanent base, or a project with development potential (STCA).

Act now â## properties with this much versatility don't come along often!

- Land Area 6,092.00 square metres
- Building Area: 99.00 square metres
- Bedrooms: 3
- Bathrooms: 1
- Single garage
- Floorboards







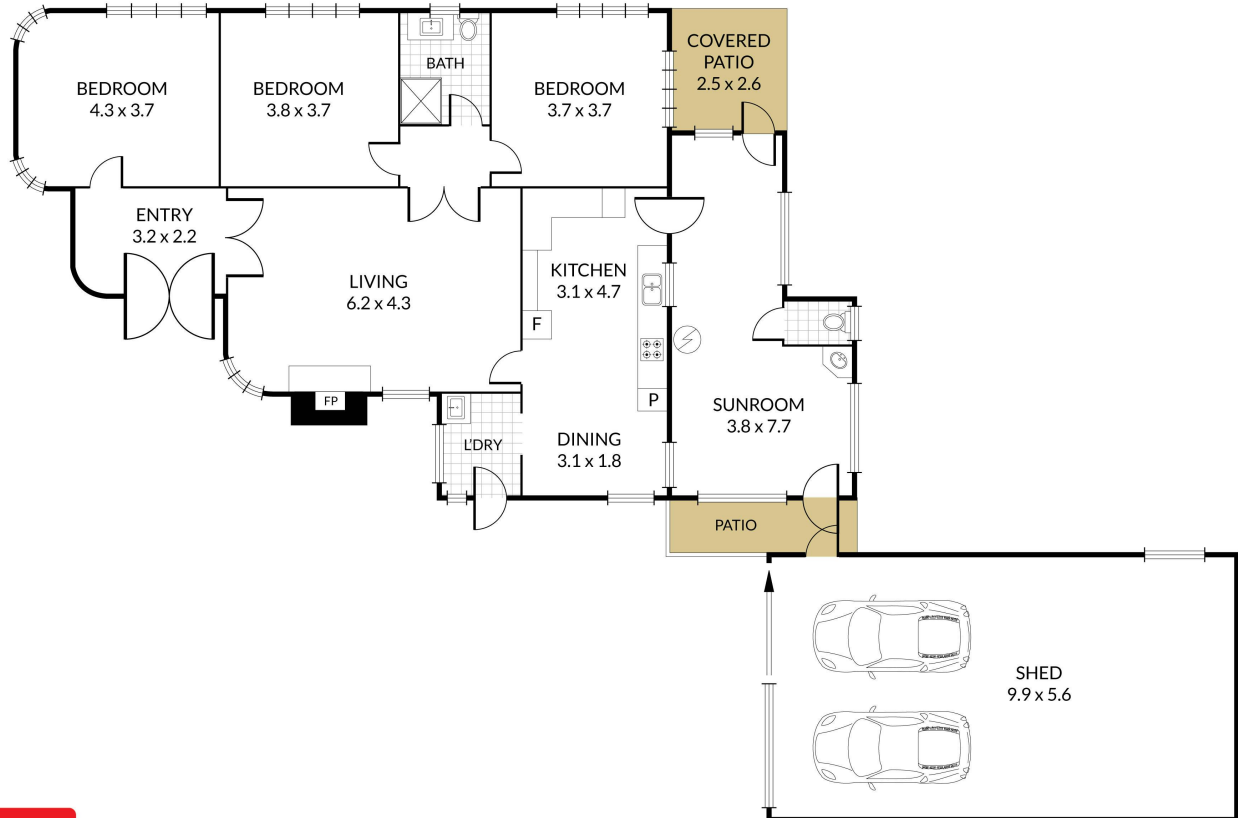




Internal 138m<sup>2</sup> External 66m<sup>2</sup> Total 204m<sup>2</sup>

880 Glenelg Highway, **Westmere**

3 x  1 x  2 x 



NOTE: Every precaution has been taken to verify the accuracy of the above details. However, prospective purchasers are advised to make their own enquiries.