



55 Wimmera Street, STAWELL, VIC 3380

Centrally Positioned Low Maintenance Brick Veneer Home

This low maintenance brick veneer home is ideally positioned in a central Stawell location, just a short stroll to shopping facilities, primary and secondary schools, Stawell Hospital and Cato Park.

Step inside via the spacious and welcoming entrance hall, immediately creating a warm sense of home. From here you'll find access to the air conditioned and gas heated lounge room, two of the three bedrooms, and the updated bathroom featuring a large corner spa, vanity and toilet.

The modernised kitchen offers electric cooking, dishwasher and a convenient breakfast bar that opens to the attached dining area. At the rear of the home is a versatile mudroom or study with backyard access, the third (smaller) bedroom and a renovated laundry.

The home is move in ready with updated floor coverings and fresh paint throughout.

Set on a well fenced 714m² allotment, the property boasts established gardens and an

The particulars contained herein are supplied for information only and shall not be taken as a representation in any respect on the part of the vendor or its agent. Interested parties should contact the nominated person or office for full and current details.

TYPE: For Sale

INTERNET ID: 64P4483

SALE DETAILS

\$375,000-\$395,000

CONTACT DETAILS

Stawell

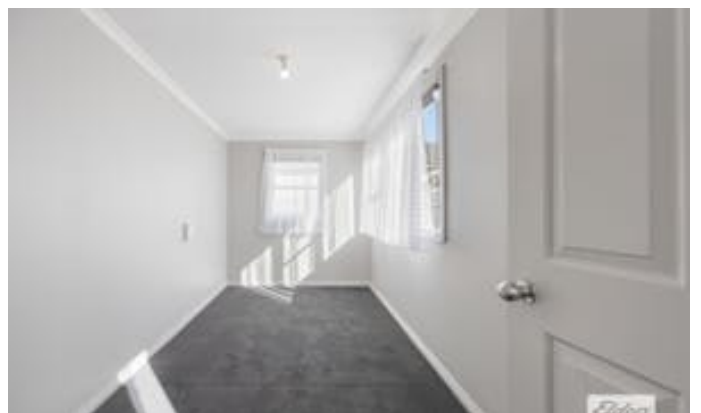
3 Patrick Street
Stawell, VIC
03 5358 3939

Ross Matthews
0408 584 954

excellent steel garage/workshop complete with concrete flooring and power.

Ideally suited to owner occupiers and investors alike, the property has a recent rental history of \$430 per week, making this centrally located, low maintenance home an outstanding investment opportunity.

- Land Area 714.00 square metres
- Bedrooms: 3
- Bathrooms: 1
- Single garage





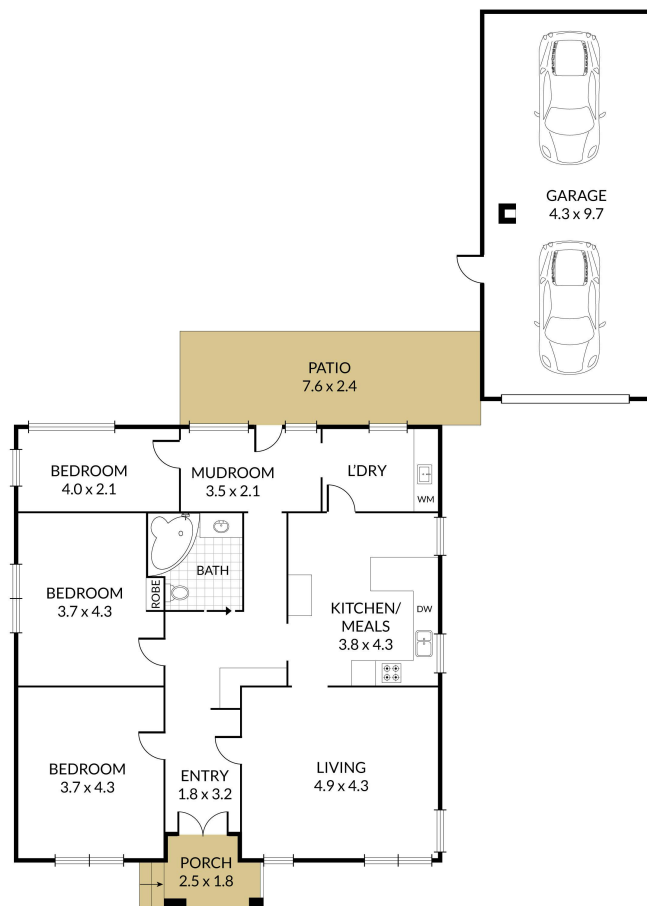


Internal 116m² External 63m² Total 179m²

55 Wimmera Street, **Stawell**



3 x 1 x 2 x



NOTE: Every precaution has been taken to verify the accuracy of the above details. However, prospective purchasers are advised to make their own enquiries.