

16 Wimmera Street, STAWELL, VIC 3380

Central executive home

This executive-built five-bedroom brick veneer home delivers space, quality, and an exceptional lifestyle, all set on an approx. 901 sqm corner block just a short stroll from Stawell's Main Street.

Designed with both comfort and functionality in mind, the home enjoys stunning views of the Black Ranges and Grampians. Outside, you'll find a double garage, a large deck with BBQ area, and a swim spa-perfect for both relaxation and exercise.

Inside, the home is packed with features including central heating and cooling, plenty of storage, three toilets, data cabling throughout, and a security system. The spacious main bedroom boasts a large walk-in robe and a private ensuite with dual shower heads, heating cupboard and a double vanity, while the remaining four bedrooms all include built-in robes.

The heart of the home is the open plan living, dining, and kitchen area, offering seamless access to the deck and showcasing those impressive mountain views. The kitchen is well-appointed with stone benchtops, a 900mm freestanding cooker with gas cooktop and electric oven, dishwasher, and a walk-in butler's pantry.

A modern main bathroom includes both a separate shower and bath, and a second living area provides additional space for the family, complete with gas heating.

TYPE: For Sale

INTERNET ID: 64P4545

SALE DETAILS

\$860,000-\$899,000

CONTACT DETAILS

Stawell

3 Patrick Street

Stawell, VIC

03 5358 3939

Ross Matthews

0408 584 954

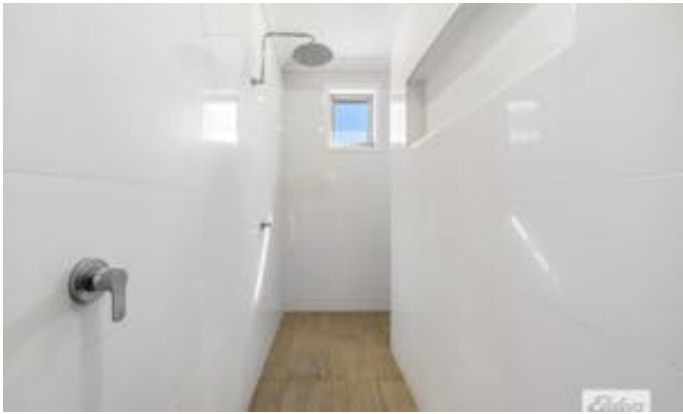
An outstanding opportunity for growing families seeking quality, space, and a prime location-inspect today to fully appreciate what's on offer.

Other features: Area Views, City Views, Close to Schools, Close to Shops, Prestige Homes, Security System, Spa

- Land Area 901.00 square metres
- Building Area: 256.00 square metres
- Bedrooms: 5
- Bathrooms: 2
- Double garage
- Ensuite







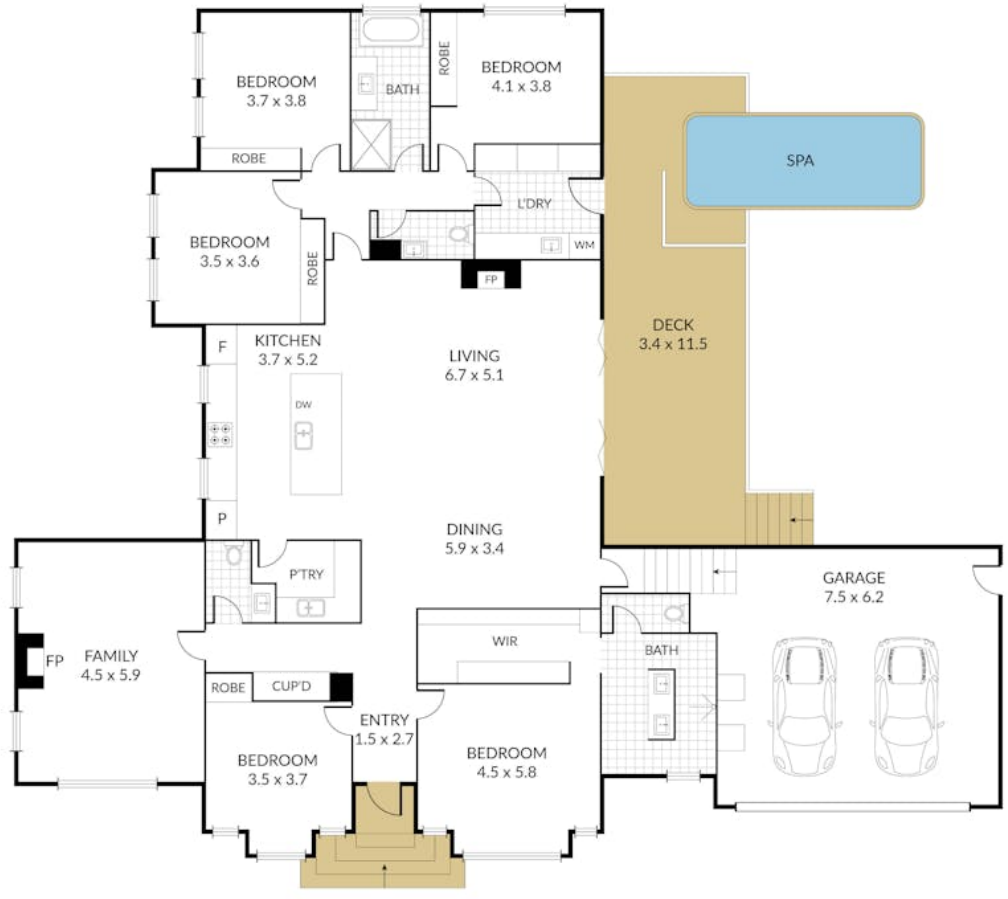


Internal 286m² External 42m² Total 328m²

16 Wimmera Street, **Stawell**



5 x 2 x 2 x



NOTE: Every precaution has been taken to verify the accuracy of the above details. However, prospective purchasers are advised to make their own enquiries.