



19 Allen Crescent, STAWELL, VIC 3380

Timeless Elegance in a Prime Central Location

Perfectly positioned just one block from Stawell's Main Street, this elegant circa 1920 period home blends classic charm with thoughtful modern updates, offering both comfort and character right in the heart of town.

Boasting five generously sized bedrooms, four feature ornate fireplaces, while the spacious main bedroom includes a walk in robe and a beautifully updated ensuite. The renovated kitchen is well appointed with a 900mm gas cooker, stainless steel benchtops, and a sleek glass splashback, seamlessly connecting to the family living area with reverse cycle split system air conditioning, ideal for everyday living and entertaining.

The modern bathroom retains its heritage appeal with a stunning clawfoot bath, complemented by a separate shower. A long central hallway enhances the sense of space, while additional features include a separate study, ample storage throughout, and a practical rear laundry.

Rich in period detail, the home showcases twelve foot ceilings, intricate lace fretwork, and ornate mantelpieces, delivering timeless character alongside contemporary comforts.

The particulars contained herein are supplied for information only and shall not be taken as a representation in any respect on the part of the vendor or its agent. Interested parties should contact the nominated person or office for full and current details.

TYPE: For Sale

INTERNET ID: 64P4865

SALE DETAILS

\$475,000

CONTACT DETAILS

Stawell

3 Patrick Street
Stawell, VIC
03 5358 3939

Ross Matthews

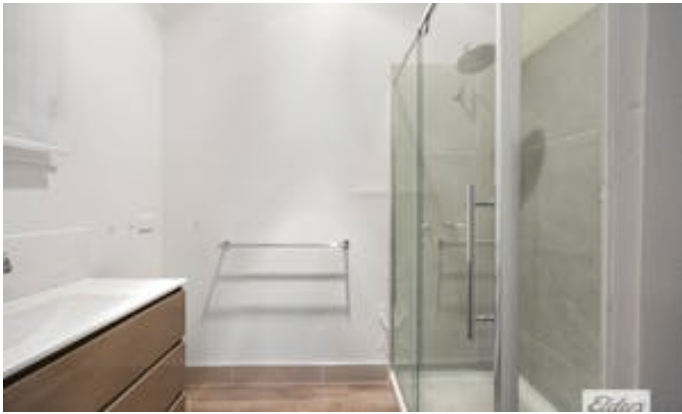
0408 584 954

With recent rental history returning \$500 per week, this property presents an excellent investment opportunity. Alternatively, with vacant possession available, it is equally suited to owner occupiers seeking space and style.

Set on an easy care allotment of 629m², the property also includes a solar power system and enjoys picturesque Grampians views from the front verandah. All of this within easy walking distance to everything Stawell has to offer.

- Land Area 629.00 square metres
- Bedrooms: 5
- Bathrooms: 2





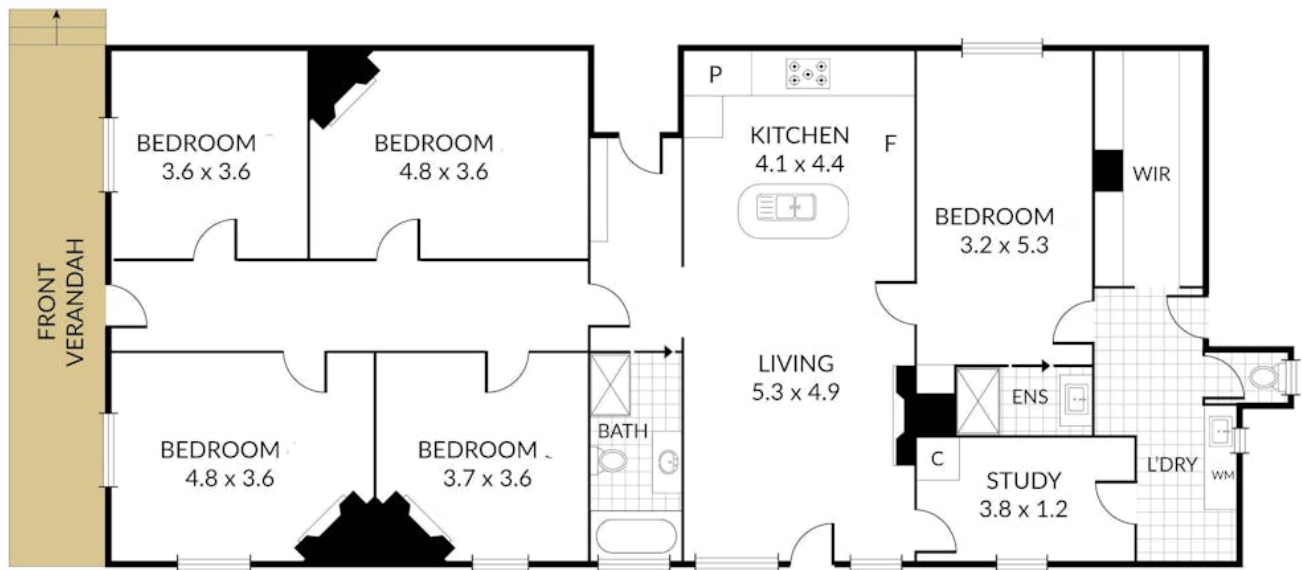


Internal 182m² External 18m² Total 200m²

19 Allen Crescent, **Stawell**



5 x 2 x



NOTE: Every precaution has been taken to verify the accuracy of the above details. However, prospective purchasers are advised to make their own enquiries.