



12-14 Bremer Rd, MURRAY BRIDGE, SA 5253

Family Home - Excellent Shedding 6900sqm lot

The complete package! Large substantial brick home on huge allotment with all the features you and your family are searching for!

Situated on a 6900 square metre block this home comprises 3 bedrooms plus an additional self contained flat under the main roof. Indoors the spacious lounge has a slow combustion heater and adjoining study/ 4th bedroom. The modern kitchen features quality appliances, large breakfast bar and ample cupboard space catering for storage. A large rumpus room is accessed from the rear verandah or the front of the home via sliding doors making for an ideal teenage retreat or home studio/ office. Cooling of the home is catered for by two reverse cycle split systems.

Outdoors features are endless! A salt water in ground pool with paved surround and entertainment area greets you as you step out the rear sliding door of the home. A flood lit former lawn tennis court, 45,000l of rainwater storage and solar panels upgradable with 5kw inverter are all part of this package. A double carport is attached to the home and there are 2 large sheds being 20'x30' with cool room and 40'x30' workshop with power and pit.

Zoned residential there is the potential to subdivide if desired (STCC). Room for Mum, Dad, the kids and throw in Granny as well. Inspection of this home really is the only way

The particulars contained herein are supplied for information only and shall not be taken as a representation in any respect on the part of the vendor or its agent. Interested parties should contact the nominated person or office for full and current details.

TYPE: Sold

INTERNET ID: 6650991

SALE DETAILS

\$495,000

CONTACT DETAILS

Murray Bridge

93 Railway Terrace

TAILEM BEND, SA

08 8572 8006

RLA: 62833

Gavin Clarke

0417 859 733

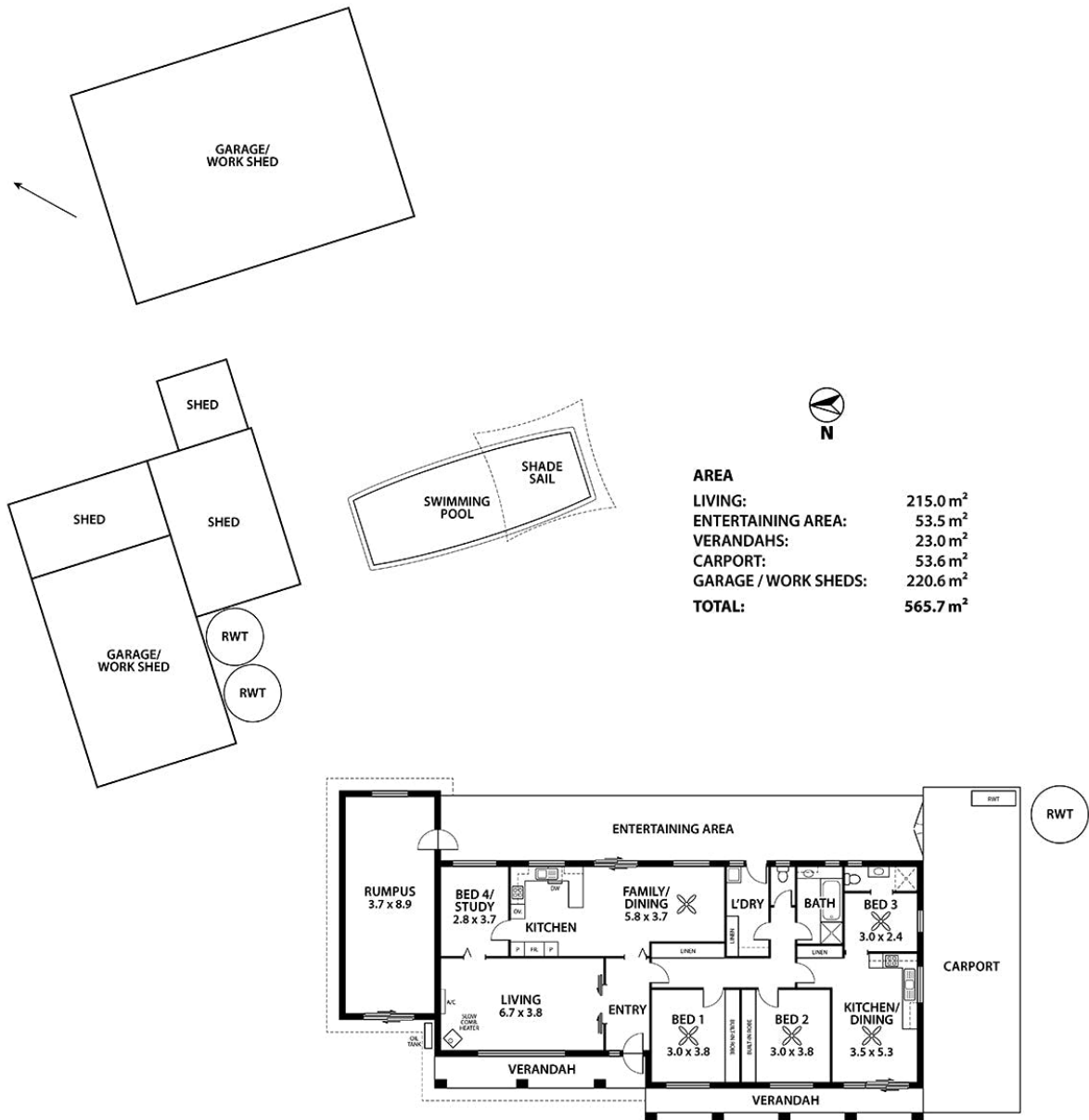
to appreciate its expansive array of features!

Other features: Built-In Wardrobes,Garden,Secure Parking,Formal Lounge

- Land Area 6,900.00 square metres
- Building Area: 274.00 square metres
- Bedrooms: 3
- Bathrooms: 2
- Double carport
- Swimming Pool
- Air Conditioning







This floorplan is for illustration purposes only and all measurements are approximate. Any information that is intended to be relied upon should be independently verified. Neither the agent or the illustrators take any responsibility for any omission, wrongful inclusion or typographical error which may occur in this drawing as it is intended as an artist's impression only. While every endeavor has been made to verify the correct details in this floor plan, neither the agent, vendor, nor illustrators accept any responsibility for any error or omission.