



## 60 Fig Tree Drive, GOONELLABAH, NSW 2480

Live, Work and Play!

Open Home Cancelled 30/07/2022

With an extra-large entertaining deck, side-access and extensive storage options, this feature-packed, solid home is sure to tick a lot of boxes!

Upstairs, the fully-equipped, contemporary kitchen with ample cupboard and pantry space features beautiful timber floors underfoot. Updated carpet flows through the living room and into the three large bedrooms, all with built-in-robos and serviced by the tidy two-way bathroom.

Step out onto the huge North-facing deck and let your imagination go crazy thinking of all the lavish gatherings or peaceful morning cuppas on offer. The generous backyard provides room for the kids and pets to play whilst still leaving space for a pool or shed (STCA).

A second bathroom downstairs accompanies a large utility room with kitchenette, providing options for a teenagers retreat or an excellent work-from-home space. A large workshop area adjoins the double lock up garage while the side-access makes storing

The particulars contained herein are supplied for information only and shall not be taken as a representation in any respect on the part of the vendor or its agent. Interested parties should contact the nominated person or office for full and current details.

**TYPE:** Sold

**INTERNET ID:** 67P2200

**SALE DETAILS**

[Contact Agent](#)

**CONTACT DETAILS**

**Elders Real Estate  
Alstonville**

80 Main Street  
Alstonville, NSW  
(02) 6628 0000

**Jack Oates**  
0429 533 940

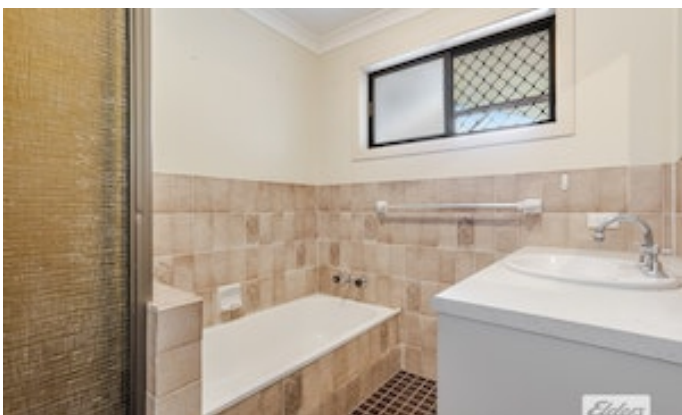
trailers, boats and caravans a breeze.

Solidly built with convenient accessibility to the university and hospitals, this dynamic home will impress.

So, book your inspection today and be sure not to miss out!

- Land Area 711.00 square metres
- Bedrooms: 3
- Bathrooms: 2
- Double garage



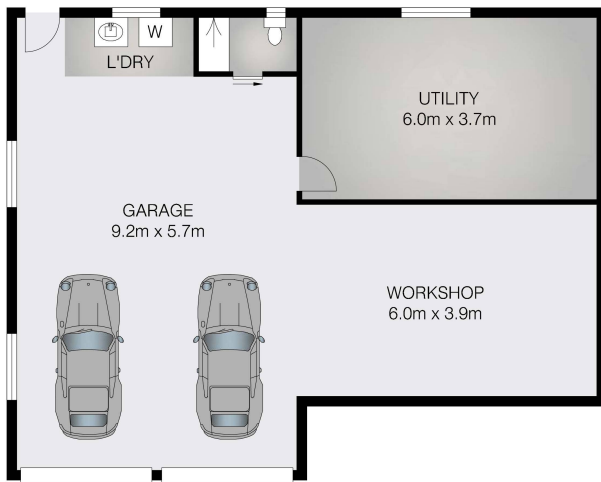




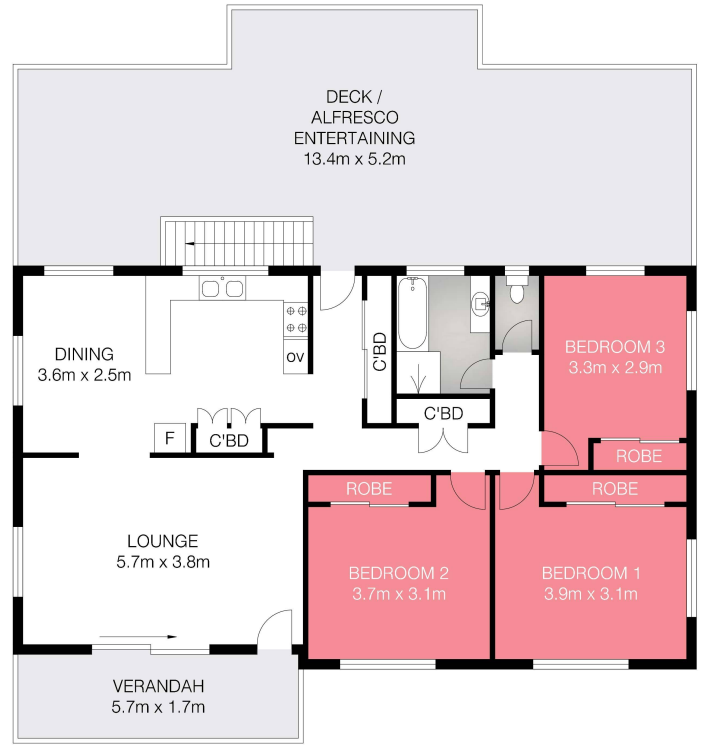




## 60 Fig Tree Drive, Goonellabah



LOWER LEVEL



UPPER LEVEL



INT : 125.8m<sup>2</sup>  
 EXT : 70.5m<sup>2</sup>  
 GARAGE/WORKSHOP : 76.2m<sup>2</sup>

Dimensions are approximate. All information contained herein gathered from sources we believe to be reliable. However we cannot guarantee its accuracy and interested persons should rely on their own enquiries @ visionmedia.vision 2022.