



24/5-15B Lamond Drive, TURRAMURRA, NSW 2074

Oversized One Bedroom +Study

Fresh substantial interiors, a tranquil leafy setting, and fantastic proximity to transport and the village hub are amongst the defining attributes of this exceptional executive apartment. Generous, airy, tranquil views. Good-sized Caesar stone kitchen with generous counter space and stainless steel European appliances, including gas cooktop, electric oven, and dishwasher. Just a quick stroll to the bus, rail, IGA Turramurra, fabulous selection of dining and shopping options in the village, and Warrawee Public, this property is a real gem in Turramurra.

Features include:

- Spacious living and dining areas
- Quality Caesar stone kitchen, European appliance, gourmet gas cooking, stainless steel appliances
- Large bedroom with built-in robe
- Reverse cycle split air conditioner in the main bedroom and living area
- Well-maintained bathroom showcases floor-to-ceiling tiles

The particulars contained herein are supplied for information only and shall not be taken as a representation in any respect on the part of the vendor or its agent. Interested parties should contact the nominated person or office for full and current details.

TYPE: For Sale

INTERNET ID: 69P1958

SALE DETAILS

Contact Agent

CONTACT DETAILS

**Elders Real Estate
Hornsby**

502 / 88-90 George Street
Hornsby, NSW
02 9987 0198

Fiona (fan) Cheng
0421 426 070

- Secure block with intercom and a Single secure car space
- Easy level access from the street, lift to parking

Convenient and fast transactions, we recommend contacting a Mortgage Broker Nancy Dai 0432 408 911 or Nancy@oceanfortunes.com . (24/7 reply)

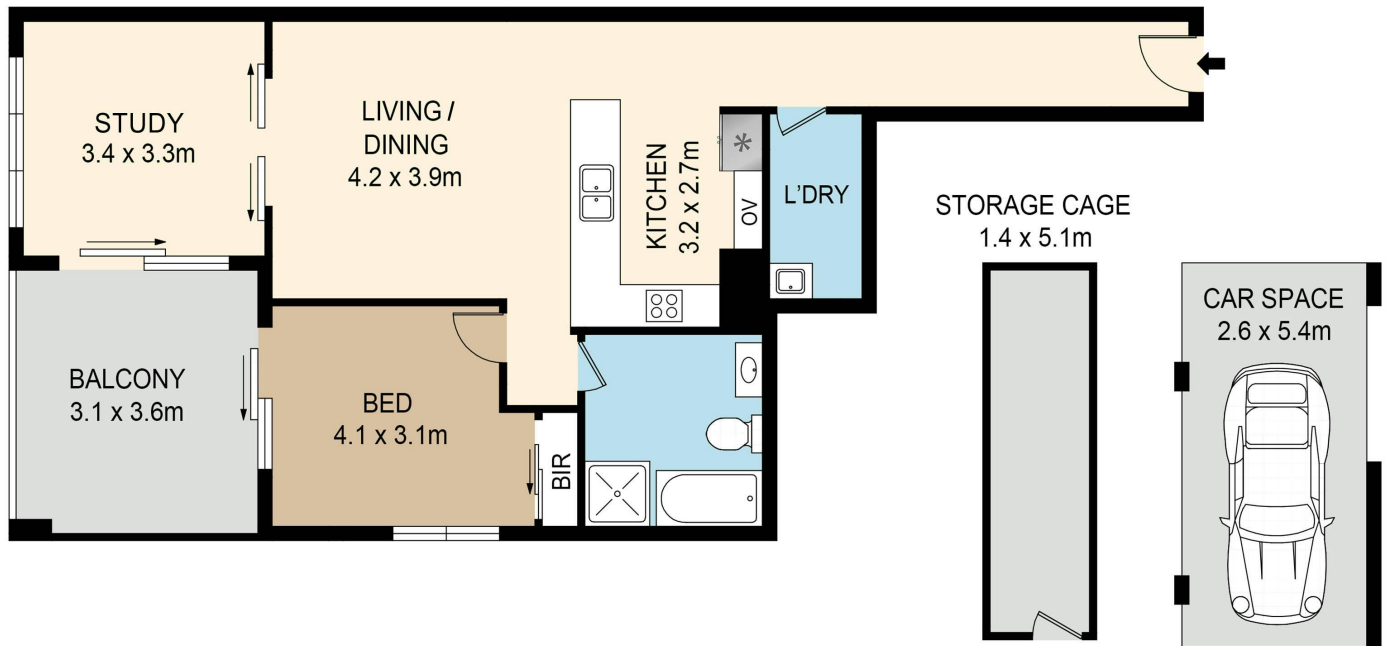
Disclaimer: The information presented has been furnished from sources we deem to be reliable. We have no reason to doubt its accuracy, however, we cannot guarantee it. All interested parties should rely on their enquiries to determine the accuracy of this information. To view our Privacy Policy, please visit our Elders Real Estate website.

Other features: Car Parking - Basement, Close to Schools, Close to Shops, Close to Transport, Security Access

- Bedrooms: 1
- Bathrooms: 1
- Car Parks: 1







24/5-15B LAMOND DRIVE, TURRAMURRA



DISCLAIMER : PLANS SHOWN ARE FOR MARKETING PURPOSES ONLY. ALL DIMENSIONS ARE APPROXIMATE AND NOT TO SCALE. THEY ARE SUBJECT TO ERRORS AND INACCURACIES AND NO LIABILITY WILL BE ACCEPTED. INTERESTED PARTIES SHOULD MAKE THEIR OWN INQUIRES.

Elders