

52/32 Castlereagh Street, LIVERPOOL, NSW 2170

Convenient, Contemporary Living in the Heart of Liverpool

Situated in the central hub of Liverpool, this one-bedroom apartment is conveniently located within easy access to all amenities, including Westfield Liverpool Shopping Centre, restaurants, the train station, hospital, cafes, schools, and Apex Park. Prepare to enjoy the ultimate convenience and low-maintenance living!

Features include:

- Open plan living & dining area with access to balcony
- Stylish kitchen with gas cooking appliances
- Good-sized bedroom with built-in robe
- Modern bathroom with feature wall
- Internal laundry
- Split system air conditioning
- Secure basement parking and storage cage
- Close to Westfield Liverpool, schools, train station, dining, Apex Park, and hospital

TYPE: For Sale

INTERNET ID: 69P2024

SALE DETAILS

\$440,000-\$460,000

CONTACT DETAILS

Elders Real Estate

Hornsby

502 / 88-90 George Street

Hornsby, NSW

02 9987 0198

Jenny (jianxin) Huang

0426 286 388

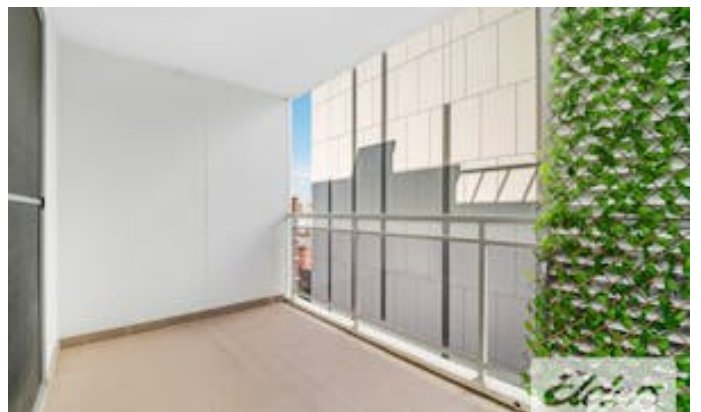
The particulars contained herein are supplied for information only and shall not be taken as a representation in any respect on the part of the vendor or its agent. Interested parties should contact the nominated person or office for full and current details.

Convenient and fast transactions, we recommend contacting a Mortgage Broker Nancy Dai 0432 408 911 or Nancy@oceanfortunes.com . (24/7 reply)

Disclaimer: The information presented has been furnished from sources we deem to be reliable. We have no reason to doubt its accuracy, however, we cannot guarantee it. All interested parties should rely on their enquiries to determine the accuracy of this information. To view our Privacy Policy, please visit our Elders Real Estate website.

Other features: Close to Schools, Close to Shops, Close to Transport, Security Access

- Bedrooms: 1
- Bathrooms: 1
- Car Parks: 1

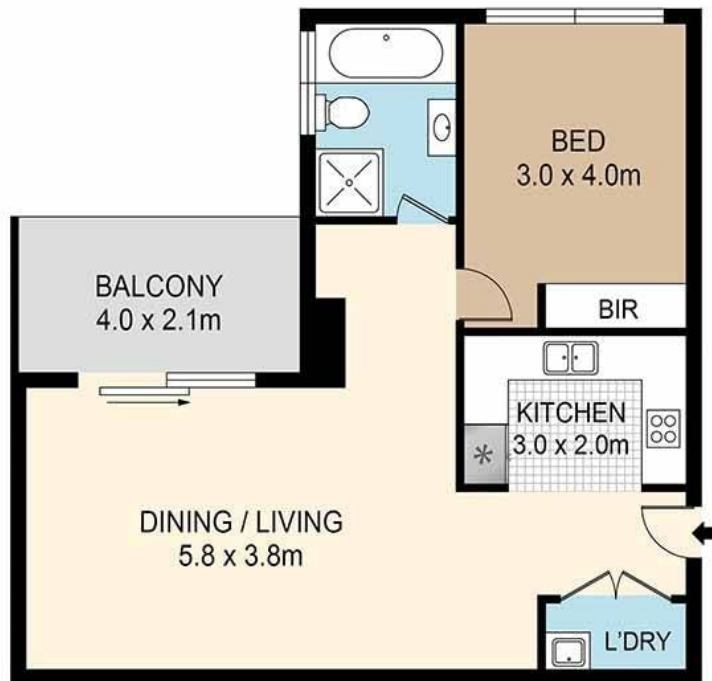
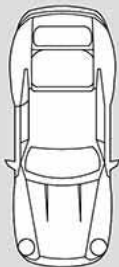




STORAGE CAGE
1.4 x 2.4m



CAR SPACE
2.4 x 5.5m



52/32 CASTLEREAGH STREET, LIVERPOOL



DISCLAIMER : PLANS SHOWN ARE FOR MARKETING PURPOSES ONLY. ALL DIMENSIONS ARE APPROXIMATE AND NOT TO SCALE. THEY ARE SUBJECT TO ERRORS AND INACCURACIES AND NO LIABILITY WILL BE ACCEPTED. INTERESTED PARTIES SHOULD MAKE THEIR OWN INQUIRES.

Elders