



## 6/2-8 Belair Close, HORNSBY, NSW 2077

Total 172 sqm !!! North- East Aspect

Embrace an easy care lifestyle of contemporary convenience in this well-appointed secure apartment. Ideally positioned it's a short walk to Waitara & Hornsby stations and Westfield Hornsby.

Features include:

- Open plan lounge and dining room adjacent to a large, sunny balcony
- 3 good size bedrooms all with built-in wardrobes, main with En-suite
- Contemporary open-plan kitchen fitted with dishwasher
- Reverse Cycle Air Conditioning
- Timber flooring
- Internal laundry with dryer
- Security basement car space
- 2 Secure building access

The particulars contained herein are supplied for information only and shall not be taken as a representation in any respect on the part of the vendor or its agent. Interested parties should contact the nominated person or office for full and current details.

**TYPE:** For Sale

**INTERNET ID:** 69P2097

**SALE DETAILS**

**Contact Agent**

**CONTACT DETAILS**

**Elders Real Estate**

**Hornsby**

502 / 88-90 George Street

Hornsby, NSW

02 9987 0198

**Fiona (fan) Cheng**

0421 426 070

- Stroll to cafes, gym, restaurants, and sporting facilities
- Walk to Waitara & Hornsby stations

Convenient and fast transactions, we recommend contacting a Mortgage Broker Nancy Dai 0432 408 911 or Nancy@oceanfortunes.com . (24/7 reply)

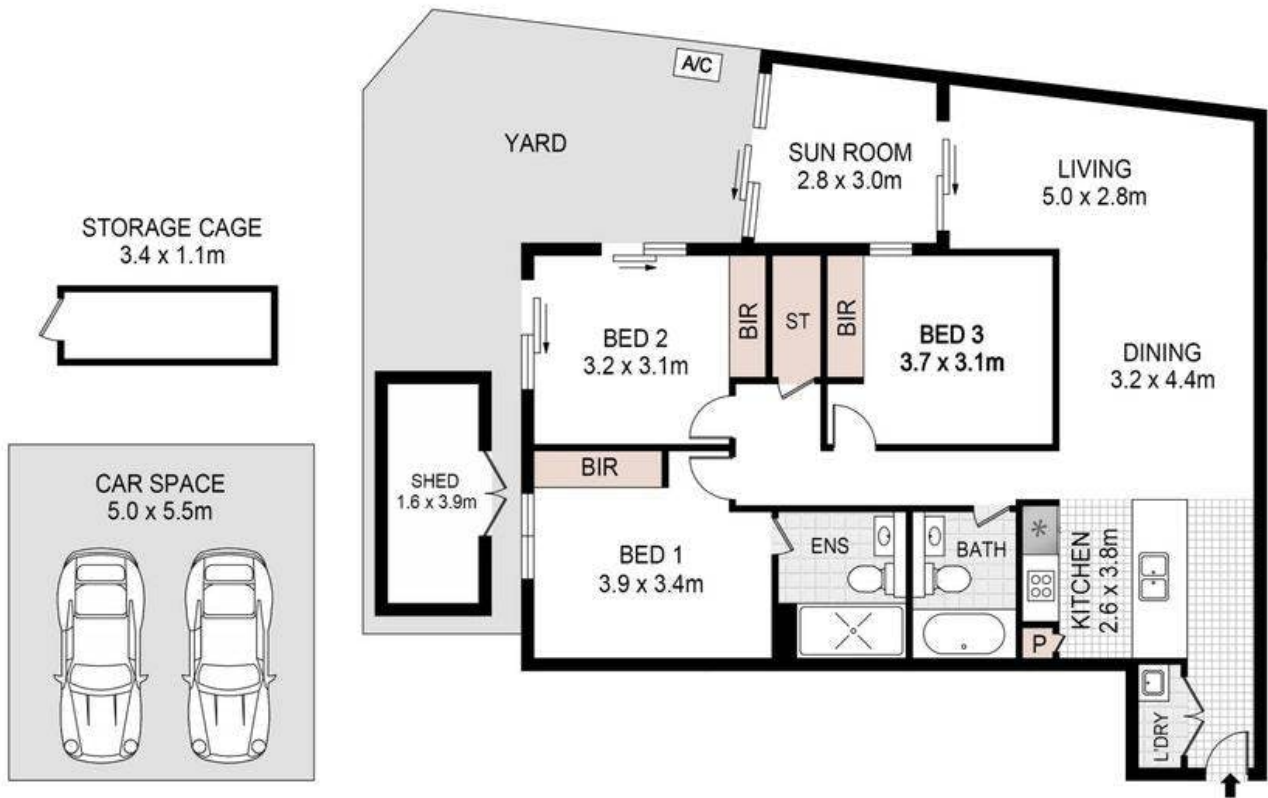
Disclaimer: The information presented has been furnished from sources we deem to be reliable. We have no reason to doubt its accuracy; however, we cannot guarantee it. All interested parties should rely on their enquiries to determine the accuracy of this information. To view our Privacy Policy, please visit our Elders Real Estate website.

Other features: Car Parking - Basement, Close to Schools, Close to Shops, Close to Transport, Security Access

- Bedrooms: 3
- Bathrooms: 2
- Car Parks: 2
- Ensuite
- Floorboards







### 6/2 BELAIR CLOSE, HORNSBY

DISCLAIMER: PLANS SHOWN ARE FOR MARKETING PURPOSES ONLY. ALL DIMENSIONS ARE APPROXIMATE AND NOT TO SCALE. THEY ARE SUBJECT TO ERRORS AND INACCURACIES AND NO LIABILITY WILL BE ACCEPTED. INTERESTED PARTIES SHOULD MAKE THEIR OWN INQUIRES.

