

26/5-9 Waitara Avenue, WAITARA, NSW 2077

North and East Facing Apartment

This modern, spacious apartment in the heart of Waitara is perfect for first-home buyers or investors. Opposite to Mark Taylor Oval and next to Waitara station, enjoy great parkland and local Schools, Westfield Shopping Centre, caf   and restaurant precinct. This spacious apartment has a unique study room layout and a spacious balcony.

Features:

- Modern kitchen with stainless steel appliances and gas cooking
- Open plan living with high ceilings throughout to a large balcony
- Two good-sized bedrooms with built-in wardrobes, main bedroom with En-suit
- Modern spacious bathrooms
- Bright huge study room
- Generous internal storage space
- Timber flooring
- Secure car space with storage cage

The particulars contained herein are supplied for information only and shall not be taken as a representation in any respect on the part of the vendor or its agent. Interested parties should contact the nominated person or office for full and current details.

TYPE: For Sale

INTERNET ID: 69P2116

SALE DETAILS

Contact Agent

CONTACT DETAILS

Elders Real Estate

Hornsby

502 / 88-90 George Street

Hornsby, NSW

02 9987 0198

Fiona (fan) Cheng

0421 426 070

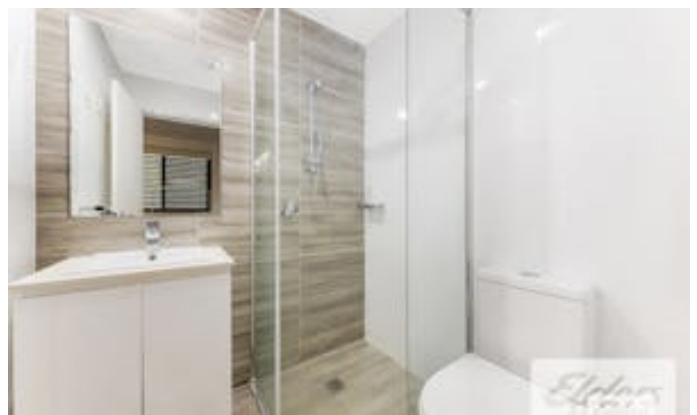
- Air conditioning
- Internal laundry with dryer
- Secure car space with one storage cage
- Short walk to Westfield Hornsby & surrounding private and public schools

Convenient and fast transactions, we recommend contacting a Mortgage Broker Nancy Dai 0432 408 911 or Nancy@oceanfortunes.com . (24/7 reply)

Disclaimer: The information presented has been furnished from sources we deem to be reliable. We have no reason to doubt its accuracy; however, we cannot guarantee it. All interested parties should rely on their enquiries to determine the accuracy of this information. To view our Privacy Policy, please visit our Elders Real Estate website.

Other features: Car Parking - Basement, Close to Schools, Close to Shops, Close to Transport, Security Access

- Bedrooms: 2
- Bathrooms: 2
- Car Parks: 1
- Ensuite
- Floorboards







26/5-9 WAITARA AVENUE, WAITARA

DISCLAIMER : PLANS SHOWN ARE FOR MARKETING PURPOSES ONLY. ALL DIMENSIONS ARE APPROXIMATE AND NOT TO SCALE. THEY ARE SUBJECT TO ERRORS AND INACCURACIES AND NO LIABILITY WILL BE ACCEPTED. INTERESTED PARTIES SHOULD MAKE THEIR OWN INQUIRES.

