

8/4-10 Dawson Street, SURRY HILLS, NSW 2010

Modern One-Bedroom Apartment in the Heart of Surry Hills

Enjoy the ultimate inner-city lifestyle with shopping, dining, entertainment and transport all at your doorstep. Perfectly positioned in sought-after Surry Hills, this apartment offers a central yet surprisingly quiet setting, within easy walking distance to Darling Quarter, Chinatown, Darling Harbour, the Harbour Foreshore, Broadway Shopping Centre, Central Station, UTS and Sydney University.

This stylish one-bedroom apartment is ideal for those seeking comfort, convenience and a vibrant city lifestyle.

Property features include:

- Spacious bedroom with built-in wardrobe
- Large kitchen with plenty of cupboards
- Timber flooring throughout the bedroom and living area
- Generous balcony, enjoy the peaceful atmosphere
- Modern bathroom with floor-to-ceiling tiles and quality fixtures

TYPE: For Sale

INTERNET ID: 69P2125

SALE DETAILS

Contact Agent

CONTACT DETAILS

**Elders Real Estate
Hornsby**

502 / 88-90 George Street
Hornsby, NSW
02 9987 0198

Kelvin(Chen) Gao
0403 303 419

- Basement storage cage included

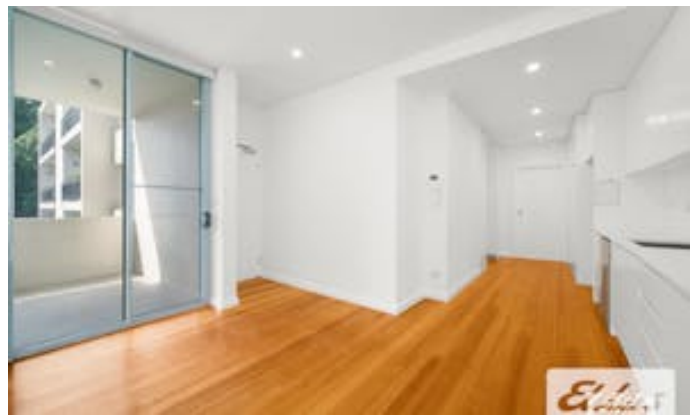
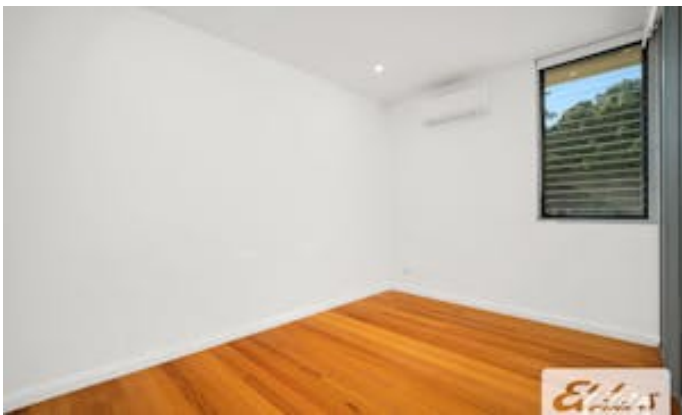
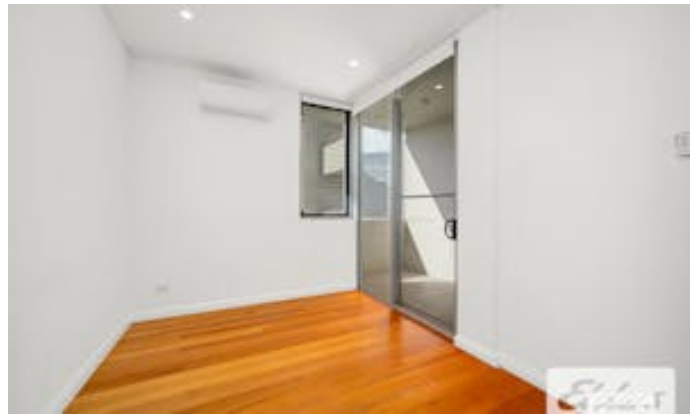
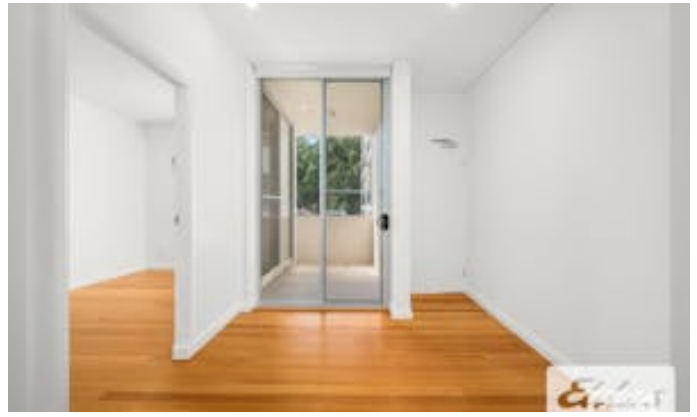
A fantastic opportunity to enjoy low-maintenance city living in one of Sydney's most convenient and vibrant locations.

Convenient and fast transactions, we recommend contacting a Mortgage Broker Nancy Dai 0432 408 911 or Nancy@oceanfortunes.com . (24/7 reply)

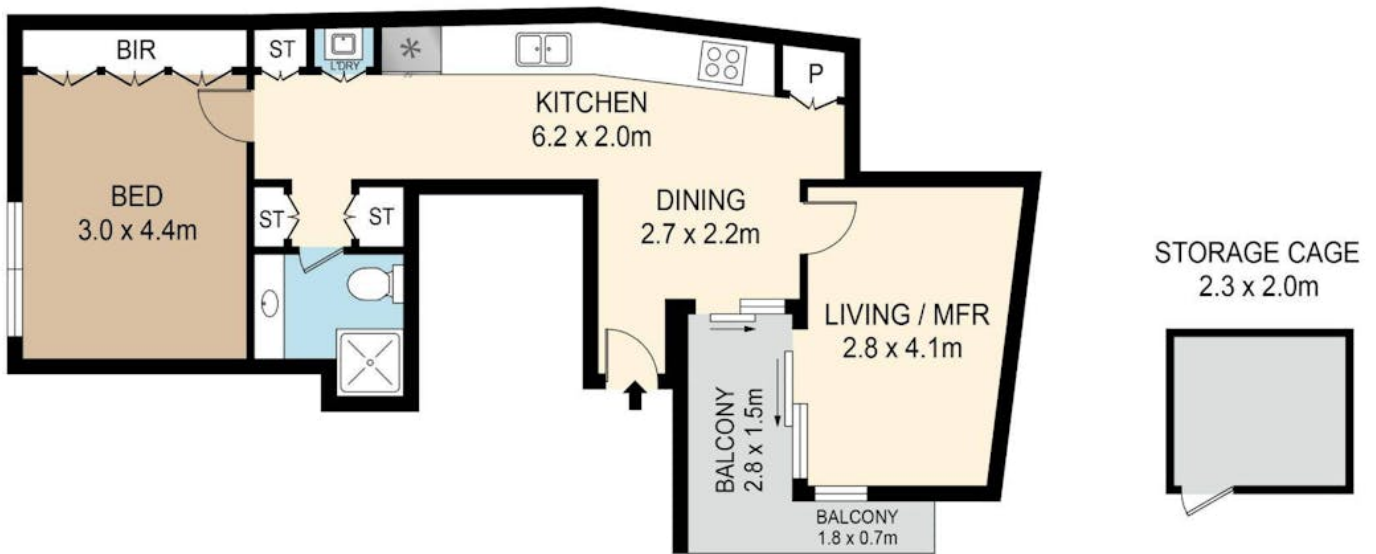
Disclaimer: The information presented has been furnished from sources we deem to be reliable. We have no reason to doubt its accuracy; however, we cannot guarantee it. All interested parties should rely on their enquiries to determine the accuracy of this information. To view our Privacy Policy, please visit our Elders Real Estate website.

Other features: Close to Schools, Close to Shops, Close to Transport

- Bedrooms: 1
- Bathrooms: 1
- Floorboards







8/4-10 DAWSON STREET, SURRY HILLS



DISCLAIMER : PLANS SHOWN ARE FOR MARKETING PURPOSES ONLY. ALL DIMENSIONS ARE APPROXIMATE AND NOT TO SCALE. THEY ARE SUBJECT TO ERRORS AND INACCURACIES AND NO LIABILITY WILL BE ACCEPTED. INTERESTED PARTIES SHOULD MAKE THEIR OWN INQUIRES.

