



86 Byangum Road, MURWILLUMBAH, NSW 2484

Large Family Home ~ Views

This spacious family home has so much to offer. Boasting 4 sizeable bedrooms, 2 bathrooms, a bonus rumpus room, modern kitchen and living, 3 car lockup garage and a large outdoor entertaining deck where you can enjoy the incredible views of Mount Warning while the kids swim in the pool.

Located close to Murwillumbah and Golf Club only minutes away this location is certainly sought after.

Property Features:

- 4 Bedroom / 2 Bathroom
- 3 Car Lockup Garage
- Saltwater Inground Pool
- Ducted Vacuum System
- Views of Mount Warning

The particulars contained herein are supplied for information only and shall not be taken as a representation in any respect on the part of the vendor or its agent. Interested parties should contact the nominated person or office for full and current details.

TYPE: Sold

INTERNET ID: 71P0672

SALE DETAILS

\$800,000.00

CONTACT DETAILS

Tweed Valley & Coolangatta

1/36-42 Main Street & 3/70
Griffith Street
Murwillumbah &
Coolangatta, NSW/QLD
02 5602 2950

Craig Dudgeon
0408 188 184

- Views of The Border Ranges
- Rates \$2260.40 pa
- Rental Appraisal \$700 Per Week
- 3 minutes to Murwillumbah

Call Craig Dudgeon 0408188184 or Amy Partridge 0437778966 to arrange your inspection today.

Disclaimer:

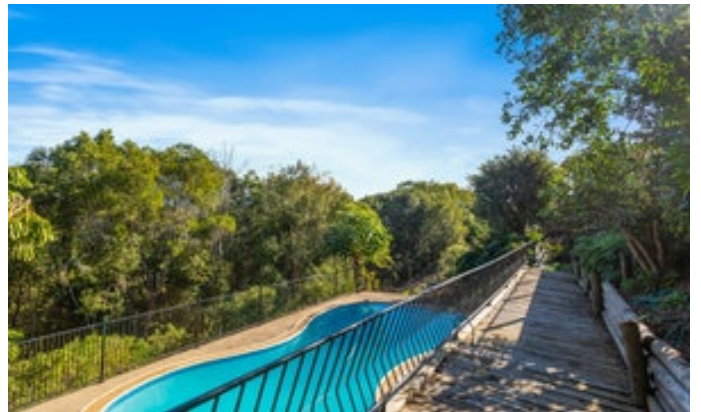
All information contained herein is gathered from sources we believe to be reliable. Elders Tweed Valley and its staff will not be held responsible for any act or omission arising from the accuracy of such material.

We cannot guarantee its accuracy and interested persons should rely on their own enquiries.

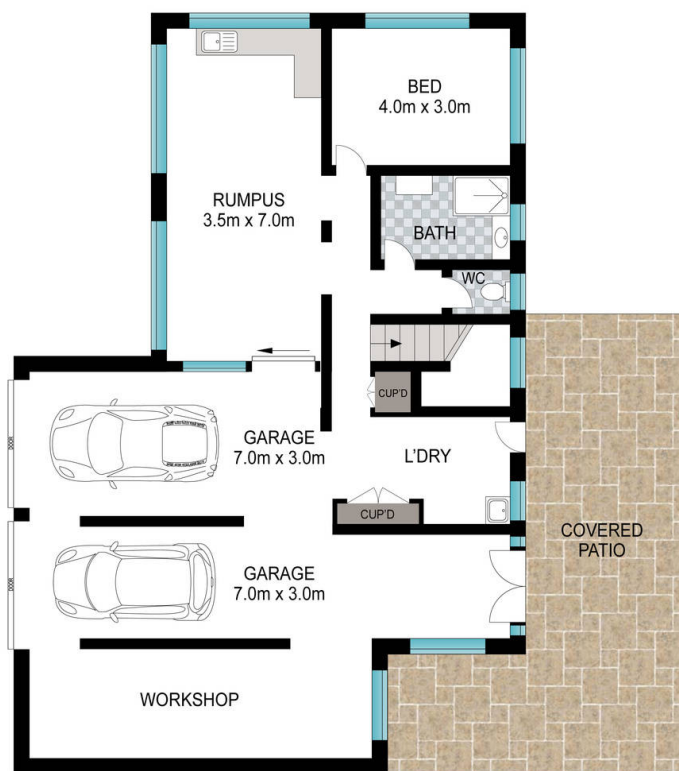
Other features: Close to Schools, Close to Shops, Close to Transport, Pool

- Land Area 615.00 square metres
- Building Area: 18.00 square metres
- Bedrooms: 4
- Bathrooms: 2
- 3 car garage
- Air Conditioning
- Floorboards

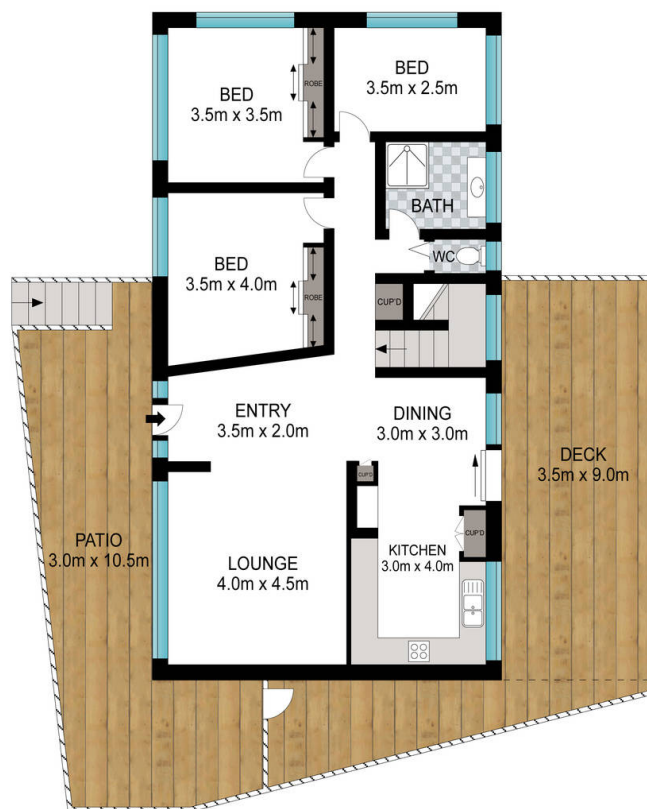








LOWER LEVEL



TOP LEVEL



Scale in metres. Indicative only. Dimensions are approximate. All information contained herein is gathered from sources we believe to be reliable. However, we cannot guarantee its accuracy and interested persons should rely on their own enquiries.

INT: 240 m²
EXT: 115 m²

86 Byangum Road, Murwillumbah