



813/37 Bay Street, TWEED HEADS, NSW 2485

Cool Coastal Living!

Immerse yourself in cool coastal living with this stylish and modern apartment located just steps from everything Tweed & Coolangatta has to offer. The layout offers an open plan kitchen, dining and living which connects the zones effortlessly with a balcony where you can enjoy a glimpse of Coolangatta Beach and Surfer's Paradise skyline.

Come and live with contemporary comfort and finishes in this sought-after location just a flat walk from everything you could ever need.

Harbourside is a secure residential building with two lifts, intercom access and a swimming pool. This is an ideal opportunity for the buyer looking to enjoy the wonderful lifestyle here on the beautiful Tweed.

FURTHER ATTRIBUTES:

- * Body Corp only \$72 per week
- * Ducted air conditioning throughout
- * Master bedroom with ensuite

The particulars contained herein are supplied for information only and shall not be taken as a representation in any respect on the part of the vendor or its agent. Interested parties should contact the nominated person or office for full and current details.

TYPE: Sold

INTERNET ID: 71P0750

SALE DETAILS

\$800,000

CONTACT DETAILS

Tweed Valley & Coolangatta

1/36-42 Main Street & 3/70 Griffith Street
Murwillumbah & Coolangatta, NSW/QLD
02 5602 2950

Kim Gamble
0417 000 381

- * Car space with storage cage
- * Pet permitted upon approval
- * Gold Coast International Airport & the M1 are only a 5 minute drive away
- * Stroll to Tweed Mall, Twin Towns Services Club, Tweed Heads Bowls Club, pristine beaches, Tweed river, boat harbour, hospital and the restaurant precinct of Coolangatta

Disclaimer:

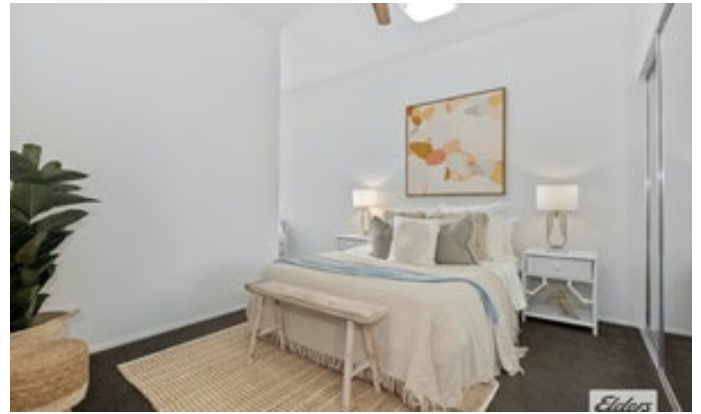
All information contained herein is gathered from sources we believe to be reliable. Elders Tweed Valley and its staff will not be held responsible for any act or omission arising from the accuracy of such material.

We cannot guarantee its accuracy and interested persons should rely on their own enquiries.

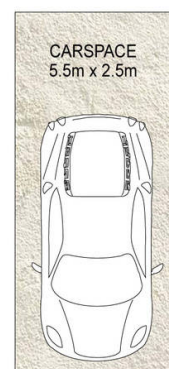
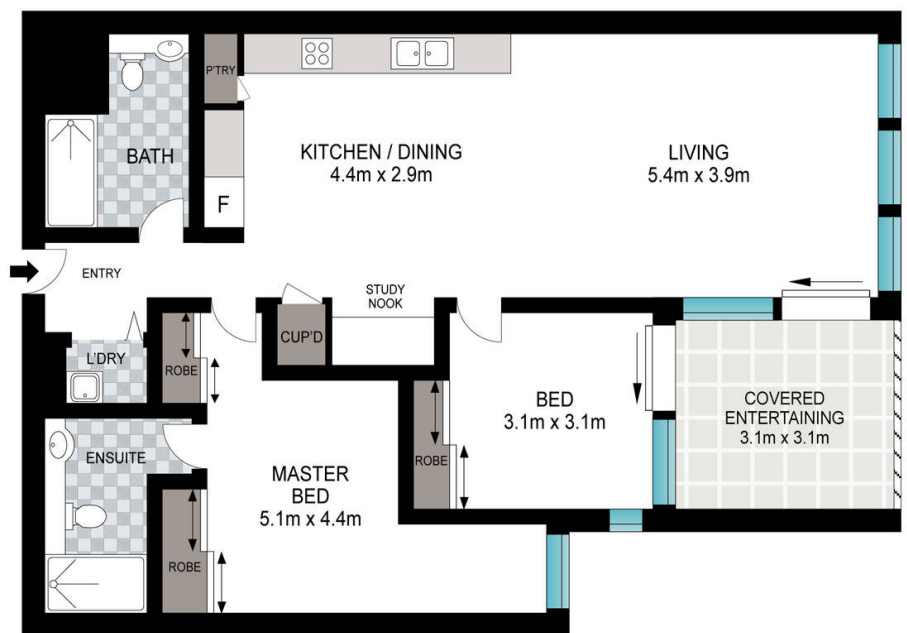
Other features: Area Views, Car Parking - Basement, Carpeted, City Views, Close to Schools, Close to Shops

- Bedrooms: 2
- Bathrooms: 2
- Car Parks: 1
- Air Conditioning









Scale in metres. Indicative only. Dimensions are approximate. All information contained herein is gathered from sources we believe to be reliable. However, we cannot guarantee its accuracy and interested persons should rely on their own enquiries.

INT/ENT: 93 m²
BASEMENT: 11 m²

813/37 Bay Street, Tweed Heads

Elders Tweed Valley | Coolangatta