



## 15 Castle Field Drive, MURWILLUMBAH, NSW 2484

### Elevated with Views

This elevated 3 bedroom home is located in the desirable Bellevue Heights Estate and takes in the amazing views of the Scenic Rim. Suited to a broad range of buyers this one is a must to inspect.

Easy to maintain lawns and gardens, this property is only minutes to Murwillumbah and 35 mins to the conveniences of the Gold Coast. Perfect spot to make a start or invest.

Timber deck off front of house catches a breeze as you enter the home. Large open plan living areas and a kitchen that looks out onto the garden and mountains beyond. Large double garage with plenty of room for a workshop and separate toilet, you start to tick the boxes. The large rear facing deck is ideal for watching the kids play in the backyard.

- \* 3 Bedrooms
- \* Air conditioned living area
- \* Large 748 sqm block

**TYPE:** Sold

**INTERNET ID:** 71P0756

#### SALE DETAILS

**\$750,000**

#### CONTACT DETAILS

**Tweed Valley & Coolangatta**

1/36-42 Main Street & 3/70 Griffith Street  
Murwillumbah & Coolangatta, NSW/QLD  
02 5602 2950

**Craig Dudgeon**  
0408 188 184

- \* Front and Rear decks
- \* Views to Springbrook
- \* Loads of potential
- \* Rental Appraisal \$620pw

Disclaimer:

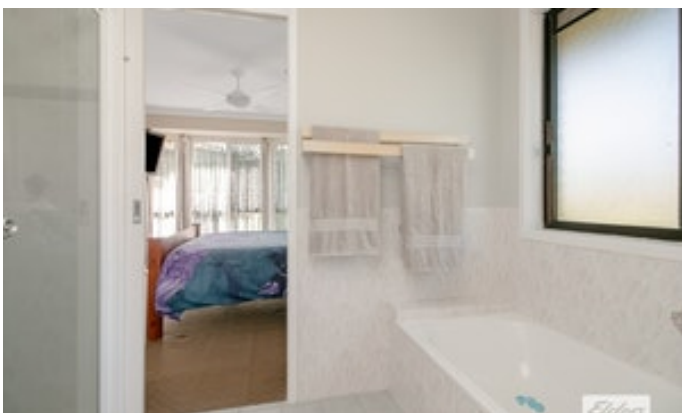
All information contained herein is gathered from sources we believe to be reliable. Elders Tweed Valley and its staff will not be held responsible for any act or omission arising from the accuracy of such material.

We cannot guarantee its accuracy and interested persons should rely on their own enquiries.

Other features: Area Views, Close to Schools

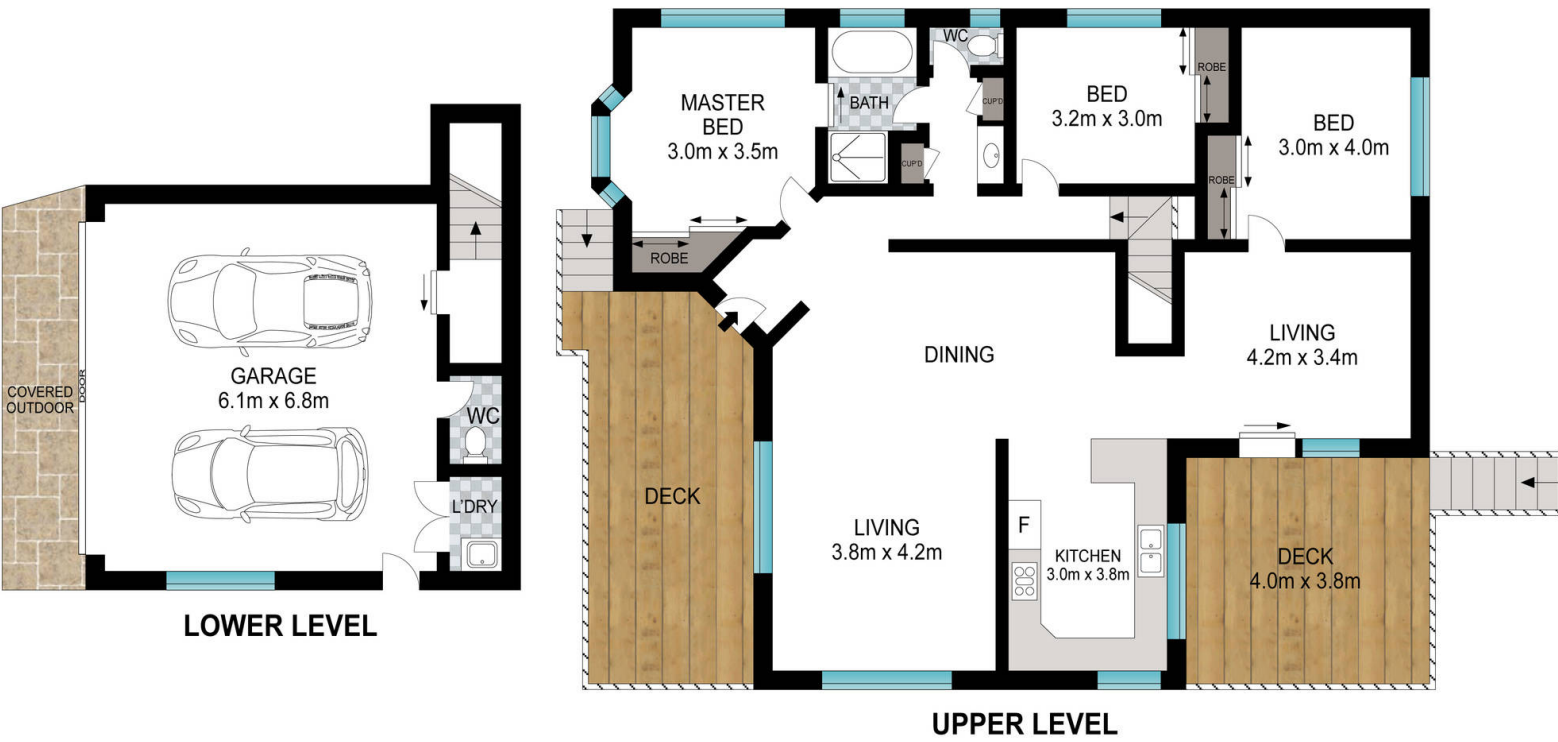
- Land Area 748.00 square metres
- Bedrooms: 3
- Bathrooms: 1
- Double garage
- Air Conditioning











Scale in metres. Indicative only. Dimensions are approximate. All information contained herein is gathered from sources we believe to be reliable. However, we cannot guarantee its accuracy and interested persons should rely on their own enquiries.

INT: 183 m<sup>2</sup>  
EXT: 40 m<sup>2</sup>

15 Castlefield Drive, Murwillumbah

