



## 119 Malabar Avenue, SMITHS CREEK, NSW 2484

### Lifestyle Getaway with Massive Views!

Celebrate abundance from this unique and very well presented, 2 bedroom home taking in massive wide, elevated, North facing views toward surrounding mountains.

Situated on 5 & 1/2 acres, the home features generous verandas, built in cupboards in each bedroom, a wood heater, timber floors, camphor benchtops and a walk in pantry.

Additional features include a large 6 x 9meter carport, an enclosed 6x3.6meter shed, a toolroom with outside sink and a spring fed dam.

With established landscaped gardens overlooking Mt Nullum, Wollumbin, The 2 Sisters and Mt Uki, "words cannot best describe just how magnificent this view is!"

Located between the villages of Stokers Siding and Uki, 15 minutes to Murwillumbah, 40minutes to Gold Coast airport and 35 minutes to Byron Bay

Suitable for cattle or a pony, call Matt Armstrong today to secure this very peaceful & scenic lifestyle property!

**TYPE:** Sold

**INTERNET ID:** 71P0796

#### SALE DETAILS

**\$1,320,000**

#### CONTACT DETAILS

**Tweed Valley & Coolangatta**

1/36-42 Main Street & 3/70 Griffith Street  
Murwillumbah & Coolangatta, NSW/QLD  
02 5602 2950

**Matt Armstrong**  
0400 162 283

#### Disclaimer:

The particulars contained herein are supplied for information only and shall not be taken as a representation in any respect on the part of the vendor or its agent. Interested parties should contact the nominated person or office for full and current details.

All information contained herein is gathered from sources we believe to be reliable. Elders Tweed Valley and its staff will not be held responsible for any act or omission arising from the accuracy of such material.

We cannot guarantee its accuracy and interested persons should rely on their own enquiries.

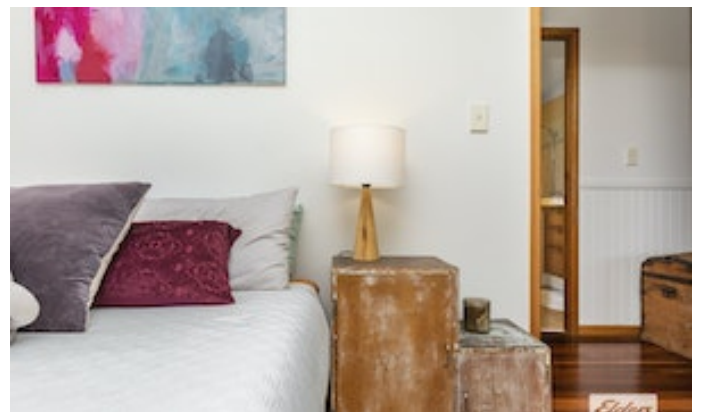
Other features: Area Views, Car Parking - Surface, Close to Schools, Close to Shops

- Land Area 2.29861 hectares
- Bedrooms: 2
- Bathrooms: 1
- Car Parks: 2
- Single garage
- Double carport
- Floorboards

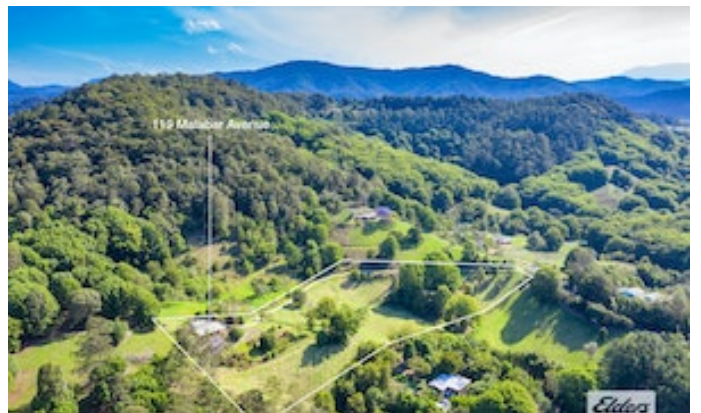


















0 1 2 3 4 5

Scale in metres. Indicative only. Dimensions are approximate. All information contained herein is gathered from sources we believe to be reliable. However, we cannot guarantee its accuracy and interested persons should rely on their own enquiries.

INT: 86 m<sup>2</sup>  
EXT: 56 m<sup>2</sup>

119 Malabar Avenue, Smiths Creek

