



17 The Plateau , MURWILLUMBAH, NSW 2484

Premier Location - The Plateau

You won't find a better location than The Plateau in Bellevue Heights Murwillumbah.

This 4 bedroom home has an amazing outlook and north facing yard that is so private. Don't hesitate with this opportunity.

The home is located at the end of the cul-de-sac on a flat block. It is single level and well laid out. The opportunity to freshen up and capitalise on its potential will only be available to one lucky purchaser.

- * 4 bedrooms
- * Solar Panels
- * Flat block single level home
- * Quiet street - Flood free
- * Close to schools and minutes to town

TYPE: Sold

INTERNET ID: 71P0845

SALE DETAILS

\$810,000

CONTACT DETAILS

Tweed Valley & Coolangatta

1/36-42 Main Street & 3/70
Griffith Street
Murwillumbah &
Coolangatta, NSW/QLD
02 5602 2950

Craig Dudgeon
0408 188 184

* Views to Springbrook

* Renovate and reap the reward

Don't delay and call Craig Dudgeon today!! 0408188184

Disclaimer:

All information contained herein is gathered from sources we believe to be reliable. Elders Tweed Valley and its staff will not be held responsible for any act or omission arising from the accuracy of such material.

We cannot guarantee its accuracy and interested persons should rely on their own enquiries.

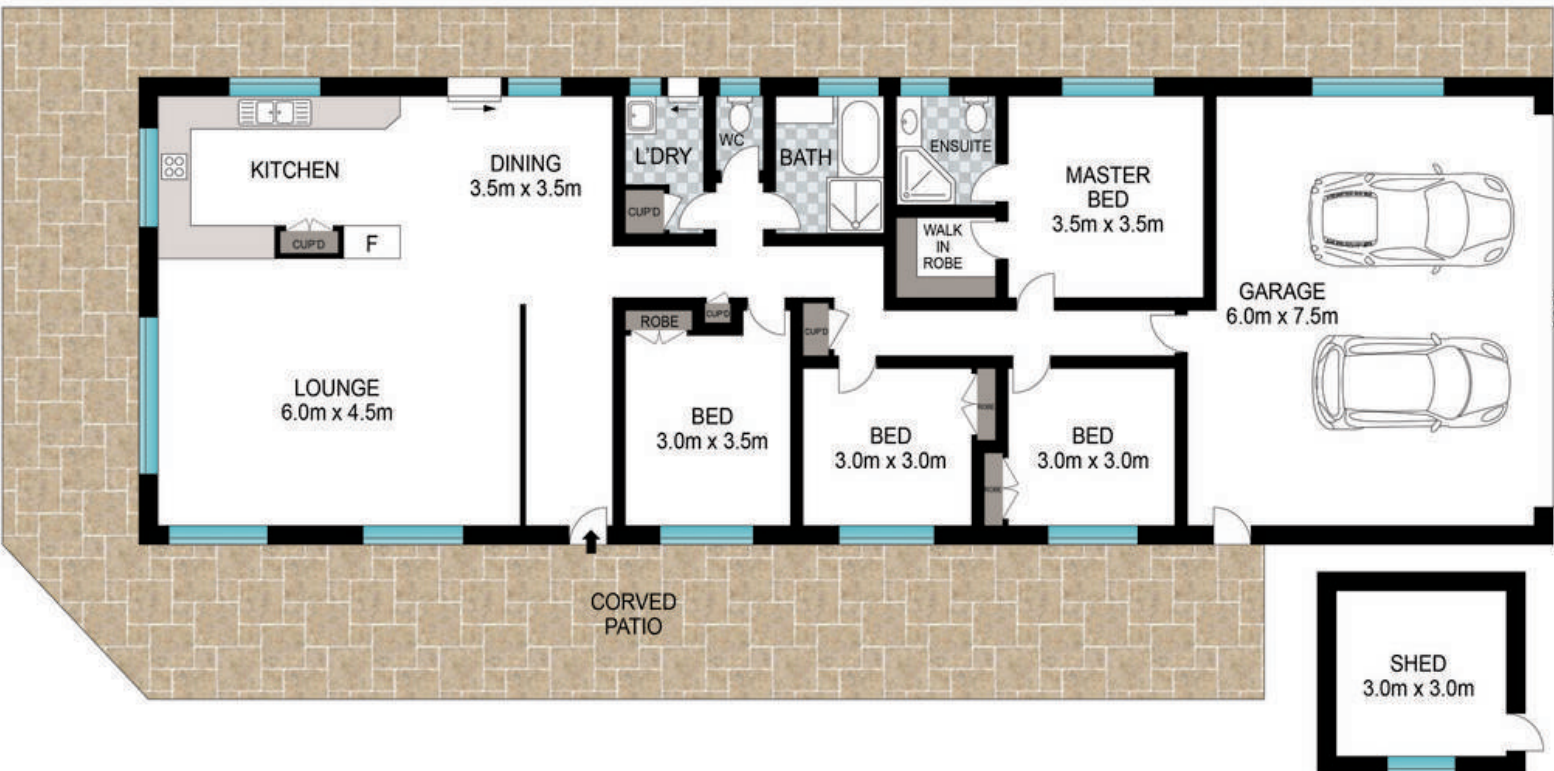
Other features: Close to Schools, Close to Transport

- Land Area 706.00 square metres
- Bedrooms: 4
- Bathrooms: 2
- Car Parks: 2
- Double garage









Scale in metres. Indicative only. Dimensions are approximate. All information contained herein is gathered from sources we believe to be reliable. However, we cannot guarantee its accuracy and interested persons should rely on their own enquiries.

17 Plateau, Murwillumbah

INT: 200 m²
EXT: 118 m²