



121 River Street, SOUTH MURWILLUMBAH, NSW 2484

Affordable Riverfront Lifestyle

A home that holds so much history of cherished times, love and laughter.

Owned by the same family for many years, its time for a new generation to enjoy as much as the last one.

Situated on the banks of the Tweed River with stunning views to Mt Warning and beyond. It's a diamond in the rough and with a little bit of TLC and some elbow grease, there is limitless potential.

Riverfront living has never been so affordable and with only minutes to the CBD and access to the M1 both North and South, this home is going appeal to the first home buyers, the renovators or the downsizers looking for the waterfront lifestyle in the growing and diverse hub of the Tweed Valley, all without the price tag.

Features;

* 2 large bedrooms with 3rd smaller room (office) + sunroom

The particulars contained herein are supplied for information only and shall not be taken as a representation in any respect on the part of the vendor or its agent. Interested parties should contact the nominated person or office for full and current details.

TYPE: Sold

INTERNET ID: 71P0866

SALE DETAILS

\$520,000

CONTACT DETAILS

Tweed Valley & Coolangatta

1/36-42 Main Street & 3/70 Griffith Street
Murwillumbah & Coolangatta, NSW/QLD
02 5602 2950

Amy Rosser
0409 641 193

- * Huge second living area or family room with views of the river and Mt Warning
- * Solar panels
- * Air con in main bed and ceiling fans throughout
- * Huge under home area with parking + storage
- * Riverfront with exceptional views
- * Walk to town
- * Rental appraisal - \$520 per week (subject to minor refurb)
- * 506m2 block

The family have given instructions to sell and to present all offers so if you would like to see what riverfront living at an affordable price looks like, don't hesitate, call Amy Rosser - Elders Tweed Valley - Sales Consultant - 0409641193 for more information.

Disclaimer:

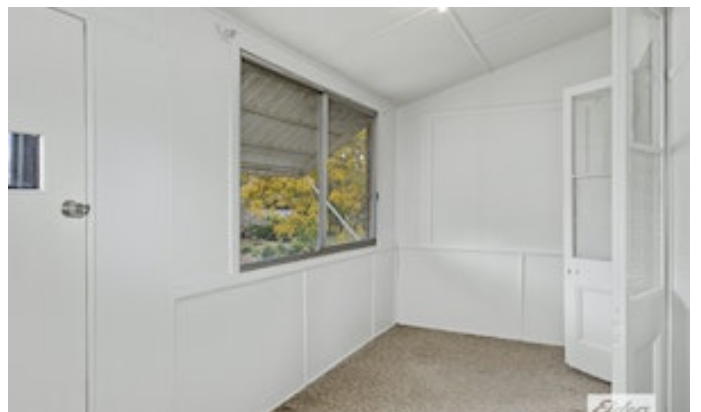
All information contained herein is gathered from sources we believe to be reliable. Elders Tweed Valley and its staff will not be held responsible for any act or omission arising from the accuracy of such material.

We cannot guarantee its accuracy and interested persons should rely on their own enquiries.

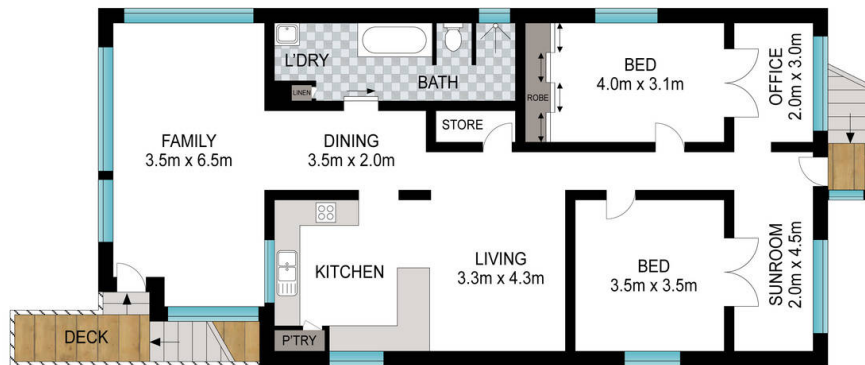
Other features: Close to Schools, Close to Shops, Close to Transport, River Views, Water Views

- Land Area 506.00 square metres
- Building Area: 118.00 square metres
- Bedrooms: 2
- Bathrooms: 1
- Double carport

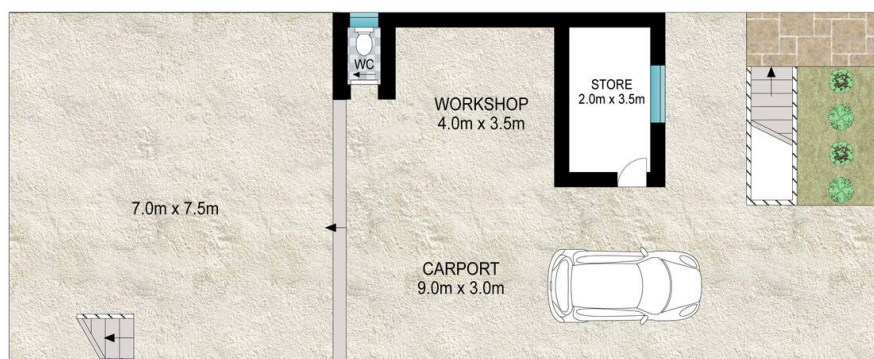








FIRST FLOOR



GROUND FLOOR



Scale in metres. Indicative only. Dimensions are approximate. All information contained herein is gathered from sources we believe to be reliable. However, we cannot guarantee its accuracy and interested persons should rely on their own enquiries.

INT: 172 m²
EXT: 5 m²

121 River Street, South Murwillumbah