



1602/22 Kirkwood Road, TWEED HEADS SOUTH, NSW 2486

AN IDYLIC LIFESTYLE WITH MAGNIFICENT VIEWS !

Set on the 16th level of the iconic Pinehurst building, with an enviable northern aspect and those incredible 180 degree views, taking in the Coolangatta skyline, Tweed River, surrounding bushland and the Pacific Ocean. This spacious apartment offers three bedrooms with floor to ceiling glass windows, all of which face that glorious outlook, plus the master bedroom comes complete with ensuite.

The generous main living space is open-plan with the living and dining flowing out onto the balcony. Connecting these zones is the well equipped kitchen with stone benchtops and lots of storage. Extra features include a powder room, a laundry and underground, side-by-side garaging for two vehicles plus a storage cage.

'Pinehurst' is a secure residential building with no holiday letting set amid beautifully landscaped surrounds and resort style facilities. If you are a golfer one of its many features is the key access for your golf cart to Coolangatta/Tweed Heads Golf Course. Convenient walking distance to the local Tweed South Sports/Bowls Club as well as your own private gated access into Tweed City Shopping Centre. Some of the many other features are included below but the only true way to experience what this property has to offer is by inspection.

TYPE: Sold

INTERNET ID: 71P0895

SALE DETAILS

\$1,175,000

CONTACT DETAILS

Tweed Valley & Coolangatta

1/36-42 Main Street & 3/70 Griffith Street
Murwillumbah & Coolangatta, NSW/QLD
02 5602 2950

Kim Gamble
0417 000 381

Pinehurst features:

- 3 apartments per level (except garden/penthouse levels)
- 2.8 acres of manicured gardens
- A large duck pond that attracts an abundance of native bird life
- A fully enclosed covered entertaining area plus an adjoining electric BBQ facility
- A 25m resort style pool with a spa
- Sauna and shower facilities
- Tennis court
- Access into Coolangatta/ Tweed golf course, if you're a member

It is a perfect location with easy access onto the M1 and being:

- 9km to Coolangatta Airport
- 5km to Coolangatta Beachfront
- 10km to Kingscliff

OUTGOING INFORMATION

Council Rates \$2424.04 per year

Body Corporate Fees \$7800.00 per year (incl water rates and building insurance)

Disclaimer:

All information contained herein is gathered from sources we believe to be reliable. Elders Tweed Valley and its staff will not be held responsible for any act or omission arising from the accuracy of such material.

We cannot guarantee its accuracy and interested persons should rely on their own enquiries. les

Other features: Area Views, Car Parking - Basement, Carpeted, City Views, Close to Schools, Close to Shops

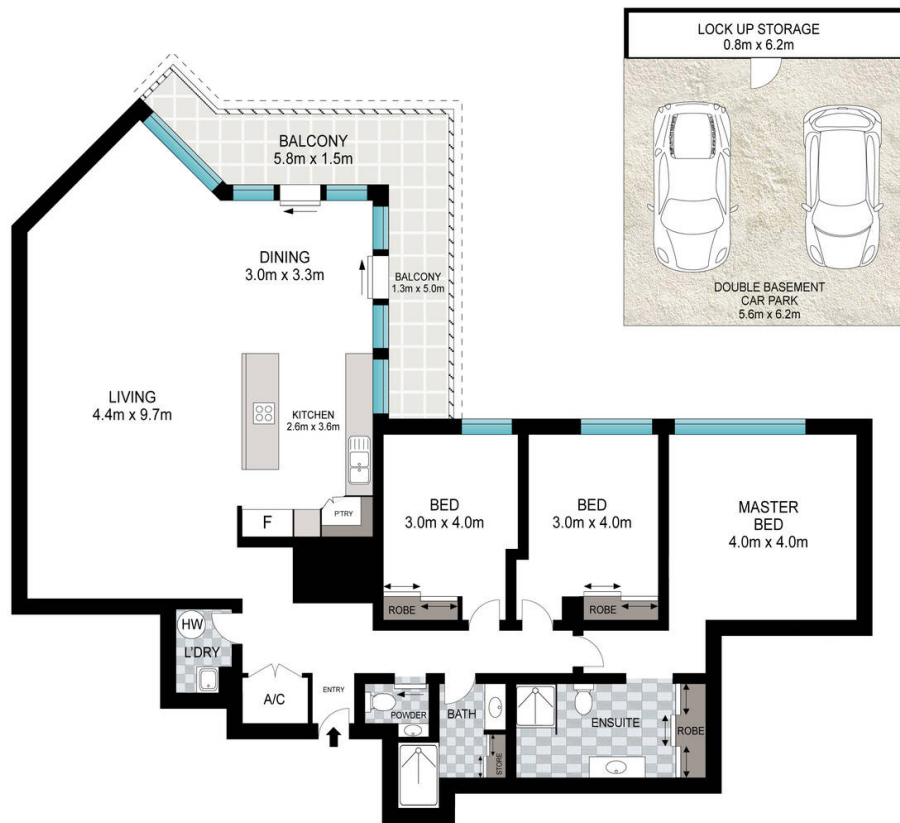
- Bedrooms: 3
- Bathrooms: 2
- Double garage











0 1 2 3 4 5

Scale in meters. Indicative only. Dimensions are approximate. All information contained herein is gathered from sources we believe to be reliable. However, we cannot guarantee its accuracy and interested persons should rely on their own enquiries.

INT: 144 m²
EXT: 53 m²



1602/22 Kirkwood Road, Tweed Heads South

Elders Tweed Valley | Coolangatta