



26 Dallis Court, DUNBIBLE, NSW 2484

Elevated 1 Acre, A Generous Home & Shed & 5 Mins to Town

Take in outstanding views from this elevated, Northern position just 5 minutes from the Northern Rivers town of Murwillumbah! This 1 acre property boasts a high quality, generous 3 bedroom brick home with features such as 9 foot ceilings, 2 large living rooms, 3 generous bedrooms, 2 bathrooms, a study, an additional store room, and a 7m x 7m lock up garage.

With lots of storage and deep veranda's to entertain from, this home is in excellent condition!

Additional features also include: solar hot water, a 2.5 kw solar array, gas cooking and a blue gum timber kitchen.

The 54 square meter shed has been designed with the height and length for a caravan to be stored in and in addition offers a workshop bay alongside.

Within 30 minutes from the Gold Coast Airport and with the Tweed Regional Gallery, the Tweed Rail Trail and Guineas Fruit, Veg & Asian Grocery store just 2 minutes from your front door, call Matt today should you wish for more information about this very comprehensive lifestyle here in the magnificent Northern Rivers Region!

TYPE: Sold

INTERNET ID: 71P1047

SALE DETAILS

\$1,205,000

CONTACT DETAILS

Tweed Valley & Coolangatta

1/36-42 Main Street & 3/70
Griffith Street
Murwillumbah &
Coolangatta, NSW/QLD
02 5602 2950

Matt Armstrong
0400 162 283

Disclaimer:

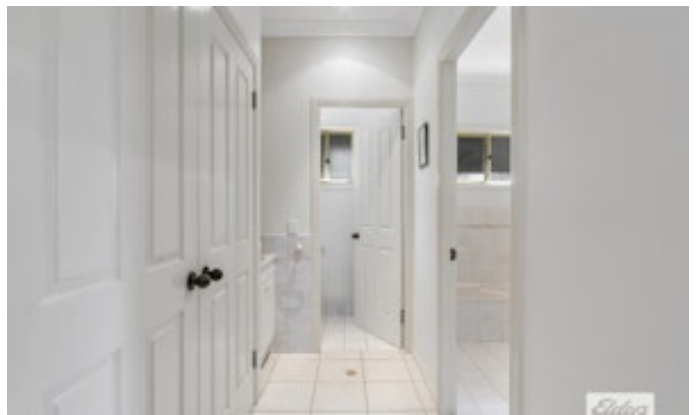
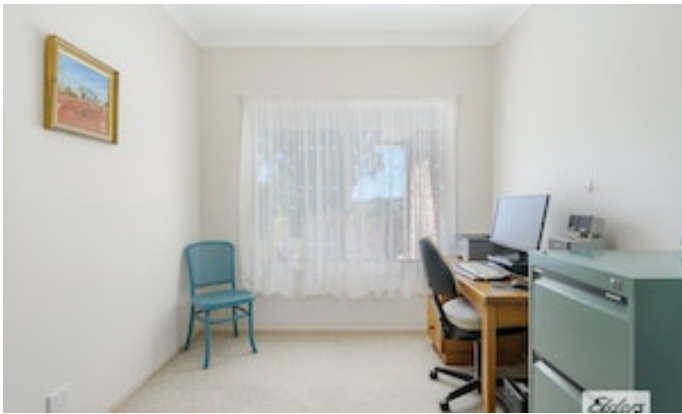
All information contained herein is gathered from sources we believe to be reliable. Elders Tweed Valley and its staff will not be held responsible for any act or omission arising from the accuracy of such material.

We cannot guarantee its accuracy and interested persons should rely on their own enquiries.

Other features: Area Views, Disabled Access

- Land Area 4,826.00 square metres
- Bedrooms: 3
- Bathrooms: 2
- Car Parks: 4
- Double garage











Scale in metres. Indicative only. Dimensions are approximate. All information contained herein is gathered from sources we believe to be reliable. However, we cannot guarantee its accuracy and interested persons should rely on their own enquiries.

INT: 252 m²
EXT: 60 m²

26 Dallis Court, Dunbible

