



## 239 Rowlands Creek Road, UKI, NSW 2484

### Fixer upper on small acreage

Do you dream of a small parcel of acreage in the Tweed Shire?

Do you want a fixer upper with good bones to put your own style and flare on?

Do you LOVE Uki and all that this iconic little village represents?

Yes, yes, YES? Well then, have I got a property for you!

Boasting just over 5 acres and with over 350meters of creek frontage of the aptly named Rowlands Creek were varieties of platypus play with a swimming hole and water source for your acreage. Whatever you chose to do with the acres, it is perfect for a few cows or horses to graze and wander.

A new roof and good bones, the house does need some tender love and care but, if you can see the potential in restoring her to her former glory and building on the firm structure that is in place then you can capitalise on what can only be described as the best buy on the market.

The particulars contained herein are supplied for information only and shall not be taken as a representation in any respect on the part of the vendor or its agent. Interested parties should contact the nominated person or office for full and current details.

**TYPE:** Sold

**INTERNET ID:** 71P1070

#### SALE DETAILS

**\$850,000**

#### CONTACT DETAILS

**Tweed Valley & Coolangatta**

1/36-42 Main Street & 3/70 Griffith Street  
Murwillumbah & Coolangatta, NSW/QLD  
02 5602 2950

**Amy Rosser**  
0409 641 193

Only minutes to the village and all that Uki has to offer and on the local school bus route, if you are in the market, this is a must to inspect.

Proudly presented to the market by Amy Rosser - Sales Consultant - Elders Tweed Valley - 0409641193

Disclaimer:

All information contained herein is gathered from sources we believe to be reliable. Elders Tweed Valley and its staff will not be held responsible for any act or omission arising from the accuracy of such material.

We cannot guarantee its accuracy and interested persons should rely on their own enquiries.

- Land Area 2.03 hectares
- Bedrooms: 4
- Bathrooms: 1
- 4 car garage



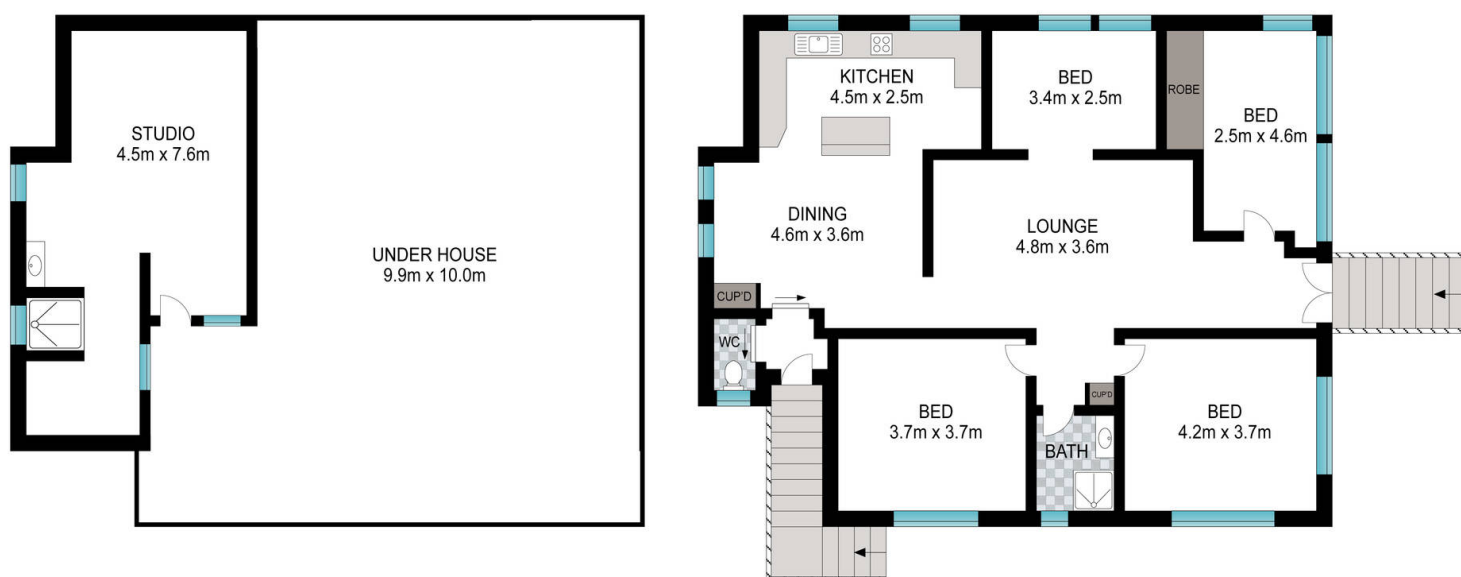












Scale in metres. Indicative only. Dimensions are approximate. All information contained herein is gathered from sources we believe to be reliable. However, we cannot guarantee its accuracy and interested persons should rely on their own enquiries.

INT: 258 m<sup>2</sup>

239 Rowlands Creek Road, Uki

