



999 Urliup Road, URLIUP, NSW 2484

Sitting On Top of The World ~ Rare Acreage Property With Captivating Views

Privacy and tranquillity are assured on this totally secluded 11-acre property located in the Tweed hinterland with the convenience of only ten minutes to Murwillumbah. In an enviable, elevated position, this stunning home enjoys spectacular views across the Tweed Valley and is surrounded by natural beauty and an abundance of wildlife. No expense has been spared on the infrastructure of the property and total transformation of the residence culminating in a stylish abode with quality fixtures and fittings throughout.

Some of the many features include:

- The home was built in 2015
- Extension built 2022
- Four generous bedrooms with built-in robes and cabinetry including the newly completed master suite with walk-in robe and ensuite
- Large main bathroom
- Designer kitchen features Black Forest Gold bench tops and splash backs, 700mm Smeg gas cook top and oven, Asko D/W, and 1.2m wide island bench with breakfast

The particulars contained herein are supplied for information only and shall not be taken as a representation in any respect on the part of the vendor or its agent. Interested parties should contact the nominated person or office for full and current details.

TYPE: Sold

INTERNET ID: 71P1090

SALE DETAILS

\$1,630,000

CONTACT DETAILS

Tweed Valley & Coolangatta

1/36-42 Main Street & 3/70 Griffith Street
Murwillumbah & Coolangatta, NSW/QLD
02 5602 2950

Kristie Hoffman

0427 328 764

bar

- Central to the home is 115m² of open plan living and dining which seamlessly flows out to the spacious alfresco terrace with glass balustrade taking in breathtaking views
- Separate built-in laundry/third bathroom
- Fans and stylish timber laminate flooring throughout with combustion heater in living
- 2.7m ceilings
- Energy efficient 10.5kw solar system with Fronius inverter installed 2019
- 14.2 kw Daikin reverse-cycle A/C, ducted installed 2017
- 10 x 4.5m fully tiled pool and optional heating installed
- Astral pool pump, filter and chlorinator and custom made cover.
- 9 x 9m insulated shed, powered and vermin proofed with mezzanine floor for extra storage
- Established walking trails meander through the property
- Plenty of parking space
- Extensive engineered rock walls surround the house
- freshwater swimming hole 1.5kms down the road
- School bus pick up at the bottom of the driveway

In such a superior location, this property ticks all the boxes for the perfect quintessential country lifestyle, surrounded by the natural beauty of the Tweed. Only 30 minutes to Gold Coast International Airport and 30 minutes to Kingscliff and your choice of pristine Tweed Coast beaches, don't miss this rare opportunity to secure an incredible property with all amenities close by.

Kristie Hoffman 0427328764 ~ Proudly representing the sale of this property.

Disclaimer:

All information contained herein is gathered from sources we believe to be reliable. Elders Tweed Valley and its staff will not be held responsible for any act or omission arising from the accuracy of such material.

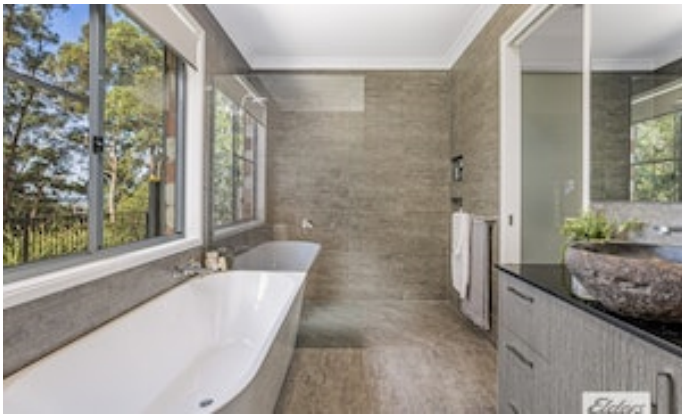
We cannot guarantee its accuracy and interested persons should rely on their own enquiries.

Other features: 3 Phase Power, Area Views, Pool

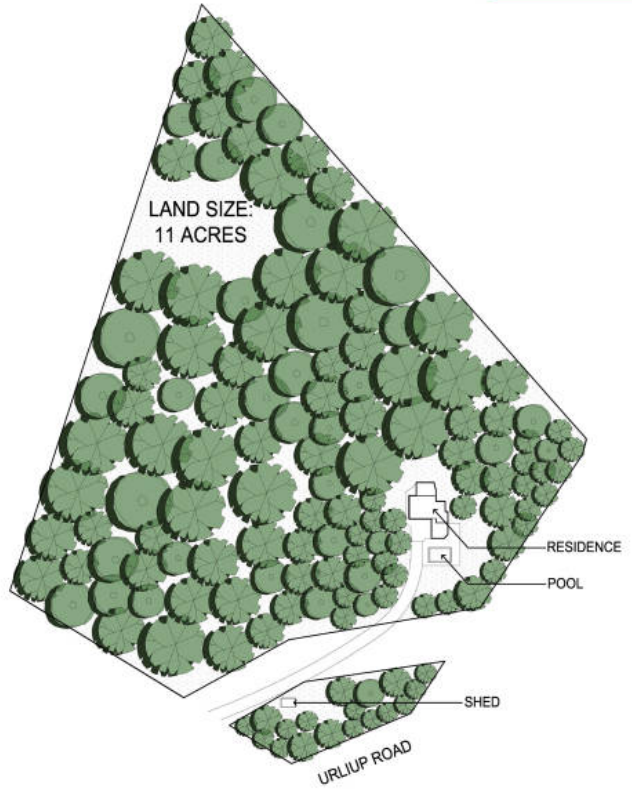
- Land Area 11 acres
- Bedrooms: 4
- Bathrooms: 3
- Car Parks: 3
- 3 car garage
- Ensuite











SITE PLAN



Scale in metres. Indicative only. Dimensions are approximate. All information contained herein is gathered from sources we believe to be reliable. However we cannot guarantee its accuracy and interested persons should rely on their own enquiries.

INTERNAL : 249 SQ.M.
EXTERNAL : 80 SQ.M.



999 Uriup Road, Uriup

