



## 9 Rous Street, MURWILLUMBAH, NSW 2484

This stunning low maintenance property, situated in the desirable neighbourhood of Murwillumbah is now available for your consideration.

Boasting 4 spacious bedrooms (2 with robes), includes 2 doubles and 2 singles. Offering the perfect blend of comfort and functionality, as you step inside, you'll be welcomed by an elegant, modern kitchen and a well-appointed bathroom, offering a touch of contemporary living. The large living room features ornate high ceilings with fans, creating an air of grandeur and elegance.

Located conveniently across from sporting fields, this property enjoys picturesque views and benefits from a rear patio, where you can relax and embrace the reliable breezes that flow through the area. With its polished timber floorboards and easy-to-live-in layout, this neat and tidy home presents a highly appealing prospect for any family.

Perfectly positioned within walking distance to Murwillumbah town and all that it offers with boutique shops, cinema, arts precinct, cafes, hotels and Sunnyside Shopping Mall. Not to mention our weekly farmers markets at the showground. Additionally, the local schools both public and private are close by and its only a 2 minute walk to Joeys Pouch day-care centre. The esteemed Murwillumbah Hospital is easily accessible.

**TYPE:** Sold

**INTERNET ID:** 71P1123

**SALE DETAILS**

**\$785,000**

**CONTACT DETAILS**

**Tweed Valley & Coolangatta**

1/36-42 Main Street & 3/70  
Griffith Street  
Murwillumbah &  
Coolangatta, NSW/QLD  
02 5602 2950

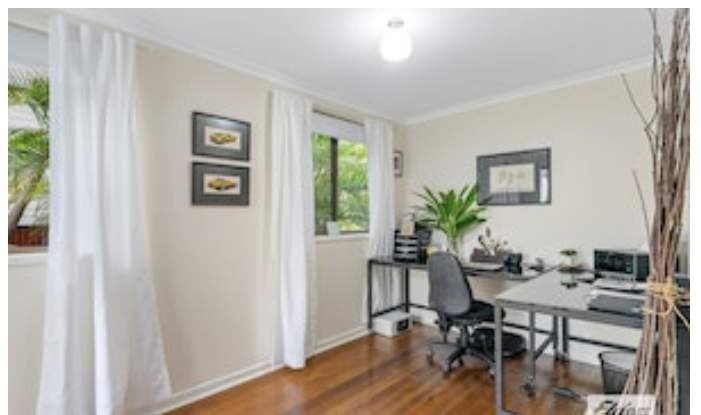
**Matt Armstrong**  
0400 162 283

Keep in mind its only 25 minutes away from the Gold Coast airport, this property offers the ideal combination of tranquility and accessibility.

Call Matt now to arrange a viewing! Don't miss out on this opportunity to secure your dream home.

Other features: Area Views, Close to Schools, Close to Shops, Close to Transport

- Land Area 478.00 square metres
- Bedrooms: 4
- Bathrooms: 1
- Car Parks: 1
- Floorboards











Scale in metres. Indicative only. Dimensions are approximate. All information contained herein is gathered from sources we believe to be reliable. However, we cannot guarantee its accuracy and interested persons should rely on their own enquiries.

INT: 170 m<sup>2</sup>  
EXT: 25 m<sup>2</sup>

9 Rous Street, Murwillumbah

