



## 22 Lakeside Drive, MURWILLUMBAH, NSW 2484

### Relaxed & Friendly Community Living

Are you looking to retire or down size? Are you over 55? Are you looking for a social community? This 2 bedroom, single bathroom unit is ready and waiting for you to put your own stamp on it. An original blank canvas to style to your own taste! A quiet and convenient location complete with a single car lockup garage. Facing East and looking over the lake this unit has a great aspect and sunny outlook.

Situated in a quiet but friendly community retirement village for the over 55's, the unit is elevated yet has flat level entry accessibility. Also only 5 minutes drive to the centre of Murwillumbah CBD, cafes and restaurants. There is so much to see and do on offer locally including the Tweed Regional Gallery & Margaret Olley Art Centre, the Northern Rivers Rail Trail for cycling or walking and you are only a tee off away from the local Golf Club and other sporting and leisure facilities. Whether you are looking for peace and quiet or an active social community lifestyle with plenty of activities available this one is amazing value to live here in the beautiful Tweed Valley.

#### Community features:

- Swimming pool

**TYPE:** For Sale

**INTERNET ID:** 71P1467

#### SALE DETAILS

**\$269,000**

#### CONTACT DETAILS

**Tweed Valley & Coolangatta**

1/36-42 Main Street & 3/70 Griffith Street  
Murwillumbah & Coolangatta, NSW/QLD  
02 5602 2950

**Dan Smith**

0415 650 852

- Bowling green
- Yoga & Pilates
- BBQ area
- Workshop
- Billiard / Snooker table
- Hair and beauty salon
- Community bus
- 25 minutes to Cabarita and Kingscliff Beaches
- Close proximity to the beautiful Tweed River for boating and fishing
- This unit has a single car lock up Garage

Don't delay and call Dan Smith today! 0415 650 852

**Disclaimer:**

All information contained herein is gathered from sources we believe to be reliable. Elders Tweed Valley and its staff will not be held responsible for any act or omission arising from the accuracy of such material.

We cannot guarantee its accuracy and interested persons should rely on their own enquiries.

**About Aveo Mountain View:**

Aveo Mountain View residents enjoy 28 acres of impressive native gardens in the picturesque Tweed Valley. A true hinterland address it is further surrounded by a lush rainforest reserve with views to Mount Warning or the central lake. Village life is very welcoming with plenty of activities to participate in. Relax by the beautiful pool or lake, have a friendly game of billiards or bowls, carve out new friendships in the workshop or pamper yourself at the hairdressing salon. If you like a spot of golf the Murwillumbah golf club is just across the road. With the convenience of the Aveo Mountain View village bus, shopping and excursions are always on the agenda. The small town of Murwillumbah is only 2 km away, where you'll find many other amenities including local shops, cafes and medical services.

You may have to pay a departure fee when you leave this village. You may have to share any capital gains received with the operator of this village.

Other features: Area Views, Close to Shops, Close to Transport, Water Views

- Building Area: 69.00 square metres
- Bedrooms: 2
- Bathrooms: 1
- Single garage





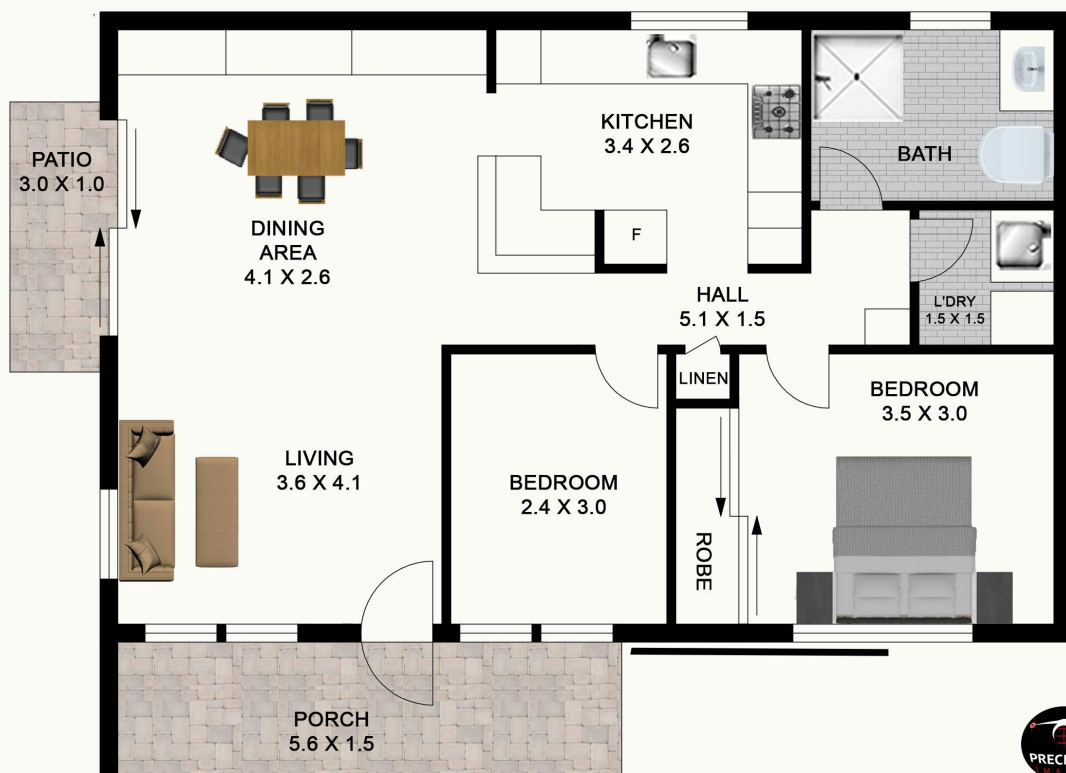
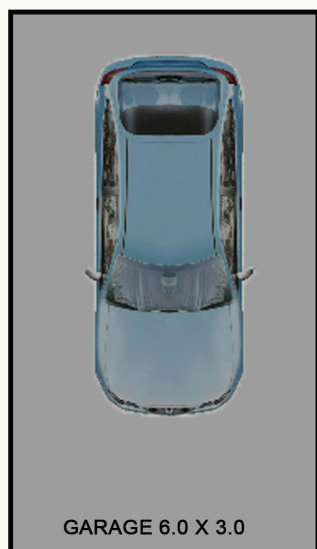








22 Lakeside Dr



Disclaimer: Floor Plan measurements are approximate and are for illustrative purposes only. While we do not doubt the floor plans accuracy, we make no guarantee, warranty or representation as to the accuracy and completeness of the floor plan. You or your advisors should conduct a careful, independent investigation of the property to determine to your satisfaction as to the suitability of the property for your space requirements.

BED: 2 BATH: 1 CAR: 1



INTERIOR FLOOR:69m2