

1269 Numinbah Road, CHILLINGHAM, NSW 2484

Mid-Century Charm Under The Gaze Of Mt Warning

Calling all mid-century lovers! For the very first time in its history, this immaculately preserved, flood-free residence is being presented to the market. The home's construction is a testament to the craftsmanship of its era with features such as rich teak throughout. Look out the kitchen window across this quarter acre of manicured gardens to Mount Warning. Cherished by the same family for six decades, the home has been meticulously maintained with original details presenting as though they were built only yesterday. Its solid bones provides the perfect canvas to tailor to your own mid-century vision.

- * Flowing lounge, dining and kitchen living space
- * Original but like new 1950s kitchen
- * Teak cabinetry and timber detailing
- * Generous bedrooms with built-in robes
- * Extensive garage ideal for tradies
- * Combined laundry and second bathroom

TYPE: For Sale

INTERNET ID: 71P1472

SALE DETAILS

New Listing!

CONTACT DETAILS

Tweed Valley & Coolangatta

1/36-42 Main Street & 3/70 Griffith Street
Murwillumbah & Coolangatta, NSW/QLD
02 5602 2950

Michelle Rafferty
0415 139 541

- * Private and fertile garden ideal for growing food
- * In an area with high demand for tourist accommodation
- * 45 minutes to Nerang and Gold Coast & 15 minutes to Murwillumbah
- * A stroll to Chillingham Village with speciality shops & school
- * Opportunity for a business such as a cafe (STCA) due to village proximity

Disclaimer:

All information contained herein is gathered from sources we believe to be reliable. Elders Tweed Valley and its staff will not be held responsible for any act or omission arising from the accuracy of such material. We cannot guarantee its accuracy and interested persons should rely on their own enquiries.

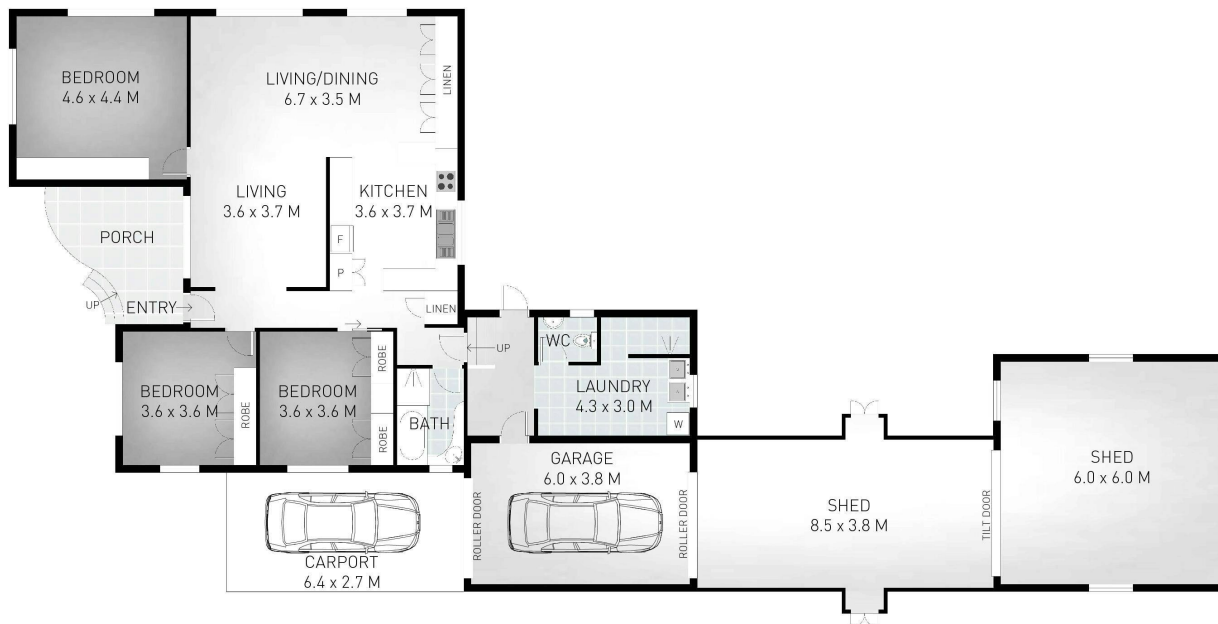
Other features: Area Views, Carpeted, Close to Schools, Close to Shops, Creative, Roller Door Access

- Land Area 1,012.00 square metre
- Building Area: 127.00 square metres
- Bedrooms: 3
- Bathrooms: 2
- Car Parks: 1
- Single garage
- Single carport
- Floorboards









MICHELLE RAFFERTY
0415 139 541

**1269 NUMINBAH ROAD,
CHILLINGHAM**

3 BEDROOM
2 BATH
2 CAR

INTERNAL: 247 SQM
EXTERNAL: 27 SQM
TOTAL: 274 SQM

Indicative only. Dimensions are approximate. All information contained herein is gathered from sources we believe to be reliable. However we cannot guarantee its accuracy and interested persons should rely on their own enquiries.