



110 Brays Creek Road, TYALGUM, NSW 2484

Low Maintenance Rural Living with Spectacular Views

Located in the scenic rural community of Tyalgum and with the convenience of walking distance to town is this much-loved home of 19 years. The property occupies an enviable, elevated position set on a totally private 1306 sqm block and takes in picturesque and uninterrupted views over World heritage-listed rainforest and The Pinnacle. Of solid construction, the well-maintained residence can easily be converted back to its original three bedrooms (see floorplan) and offers serene country living on such a manageable block.

Features of the property include:

- Two bedrooms including the large master with powder room, A/C, and walk-in-robe
- Updated bathroom
- Well equipped kitchen with plenty of bench space
- Warm and inviting spacious open plan living and dining with A/C, combustion heater and vaulting 3.8m raked ceilings
- Easy care timber vinyl flooring throughout

The particulars contained herein are supplied for information only and shall not be taken as a representation in any respect on the part of the vendor or its agent. Interested parties should contact the nominated person or office for full and current details.

TYPE: For Sale

INTERNET ID: 71P1475

SALE DETAILS

\$849,000

CONTACT DETAILS

Tweed Valley & Coolangatta

1/36-42 Main Street & 3/70 Griffith Street
Murwillumbah & Coolangatta, NSW/QLD
02 5602 2950

Kristie Hoffman
0427 328 764

- Over 80 sqm of full length covered verandahs both front and rear encourage outdoor living, perfect for alfresco dining and showcasing picturesque views
- Fully fenced rear yard with established gardens

Tyalgum is known for its vibrant arts community and attractions including Flutterbies Caf  , Tyalgum store, the highly praised Tyalgum Hotel, and primary school. Only 1.1km to town, 21 minutes to Murwillumbah, and 45 minutes to Gold Coast International Airport. In such an idyllic location, this property is the perfect place to call home exuding a rural feel without the hard work.

Kristie Hoffman 0427328764 ~ Proudly representing the sale of this property.

Disclaimer:

All information contained herein is gathered from sources we believe to be reliable. Elders Tweed Valley and its staff will not be held responsible for any act or omission arising from the accuracy of such material.

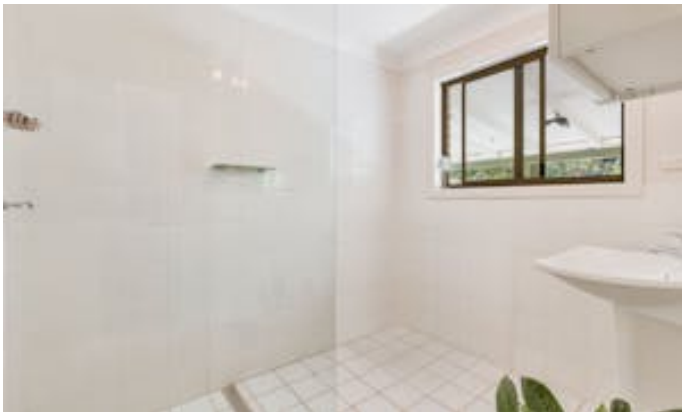
We cannot guarantee its accuracy and interested persons should rely on their own enquiries.

Other features: Area Views, Close to Schools, Close to Shops

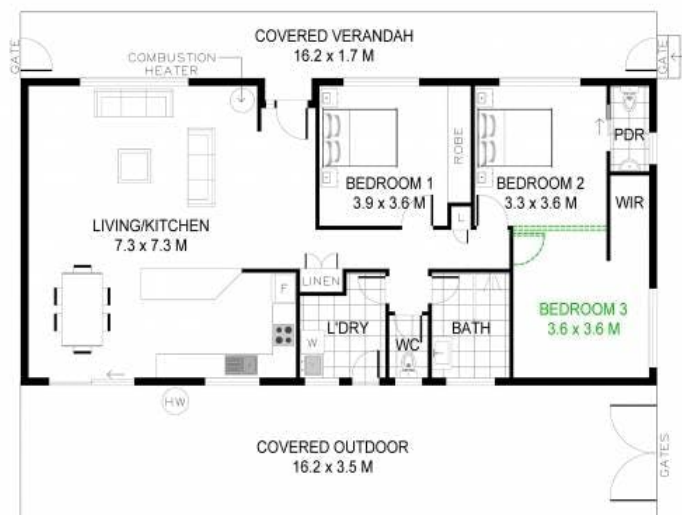
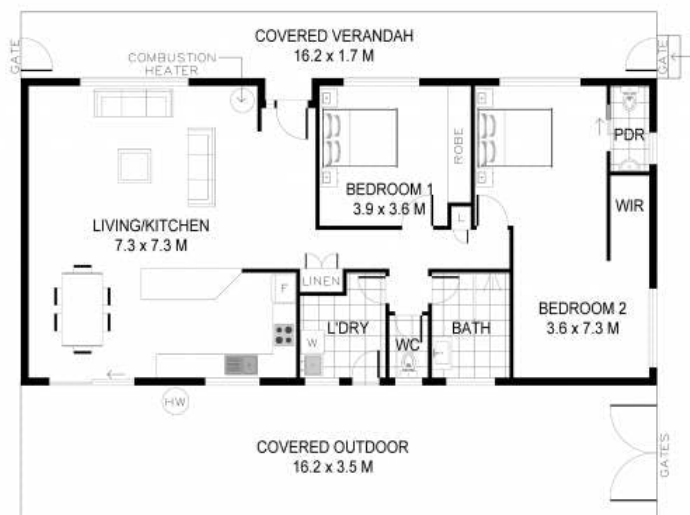
- Land Area 1,306.00 square metre
- Bedrooms: 2
- Bathrooms: 1
- Double carport











CONVERSION OPTION
FOR BEDROOM 3

0 1 2 3 4 5

Scale in metres. Indicative only. Dimensions are approximate. All information contained herein is gathered from sources we believe to be reliable. However we cannot guarantee its accuracy and interested persons should rely on their own enquiries.

INTERNAL : 127 SQ.M.
EXTERNAL : 85 SQ.M.



110 Brays Creek Road, Tyalgum

