

1/127 River Street, SOUTH MURWILLUMBAH, NSW 2484

Riverside living with long views, real character and solid investor appeal

Set high above the banks of the Tweed River, this three bedroom one bathroom home offers a calm and elevated outlook that you feel the moment you step inside. The river views from your large private rear deck are the hero here, stretching across the water and catching the changing light through the day.

This home is immaculately kept and has a warm sense of character that is hard to find. The layout is simple and practical, with good natural light and easy connections between living, dining and kitchen. Outdoors, the elevated position creates a relaxed riverside feel with cooling breezes and a sense of privacy.

With a single car space, ample visitor parking and great amenity close by, this is a tidy and comfortable home that suits buyers who value outlook, lifestyle or a quality investment

- Elevated river views
- Immaculately presented throughout

TYPE: For Sale

INTERNET ID: 71P1543

SALE DETAILS

\$720,000

CONTACT DETAILS

Tweed Valley & Coolangatta

1/36-42 Main Street & 3/70 Griffith Street
Murwillumbah & Coolangatta, NSW/QLD
02 5602 2950

Craig Dudgeon
0408 188 184

- Quiet position close to local amenity

Craig Dudgeon 0408188184

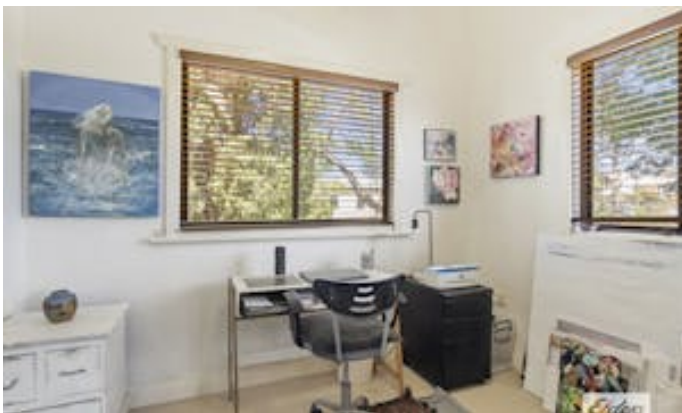
Rob Yette 0458 896 379

All information contained herein is gathered from sources we believe to be reliable. Elders Tweed Valley and its staff will not be held responsible for any act or omission arising from the accuracy of such material. We cannot guarantee its accuracy and interested persons should rely on their own enquiries.

Other features: Area Views, High Clearance, River Views, Water Views

- Bedrooms: 3
- Bathrooms: 1
- Single carport









Plans are indicative only. Dimensions are approximate. All information contained herein is gathered from sources we believe to be reliable. However, we cannot guarantee its accuracy and interested persons should rely on their own enquiries

1/127 RIVER STREET SOUTH MURWILLUMBAH

3
 1
 1
 Internal: 88 m² | External: 35 m² | Total: 123 m²