



40 William Street, MURWILLUMBAH, NSW 2484

Classic Australian charm on a generous block

A quintessential 2 bedroom Australian home, full of warmth, character and ready for its next chapter. This is the kind of place where memories are made, whether it's family dinners, weekend projects or simply enjoying the space around you.

Inside, a flowing living, dining and kitchen layout creates an easy, connected feel, ideal for both everyday living and entertaining. It's comfortable as is, with plenty of opportunity to enhance over time.

Set on a large block, the home offers flexibility with a single garage, carport and extensive under house storage, perfect for tools, hobbies or future potential.

A genuine opportunity for those looking to step into something with heart, space and long term upside.

Key Features:

- Classic 2 bedroom Australian home full of character

TYPE: Under Contract
INTERNET ID: 71P1591

SALE DETAILS

\$865,000

CONTACT DETAILS

Tweed Valley & Coolangatta
1/36-42 Main Street & 3/70 Griffith Street
Murwillumbah & Coolangatta, NSW/QLD
02 5602 2950

Craig Dudgeon
0408 188 184

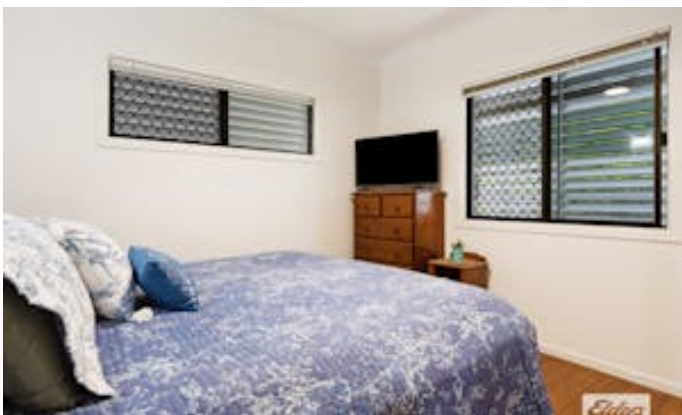
- Flowing living, dining and kitchen layout
- Large yard with room to grow and enjoy
- Single garage, carport and generous under house storage

Craig Dudgeon 0408188184

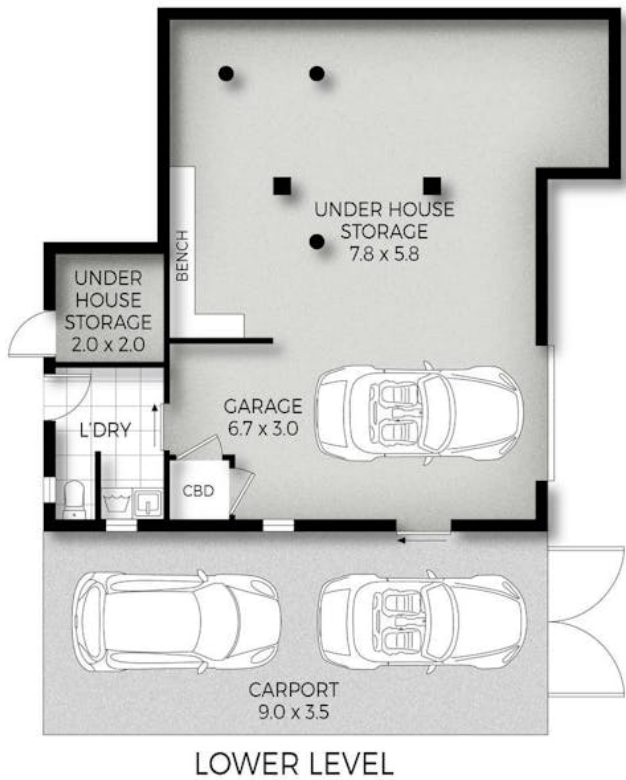
Rob Yette 0458 896 379

All information contained herein is gathered from sources we believe to be reliable. Elders Tweed Valley and its staff will not be held responsible for any act or omission arising from the accuracy of such material. We cannot guarantee its accuracy and interested persons should rely on their own enquiries.

- Bedrooms: 2
- Bathrooms: 1
- Single garage
- Single carport







Plans are indicative only. Dimensions are approximate. All information contained herein is gathered from sources we believe to be reliable. However, we cannot guarantee its accuracy and interested persons should rely on their own enquiries

40 WILLIAM STREET, MURWILLUMBAH

2
 1
 3
 Internal: 165 m² | External: 31 m² | Total: 196 m²