



225 Tyalgum Road, EUNGELLA, NSW 2484

A Magnificent Property, Close to Town!

35.33 hectares, 87.30 acres

Located in the heart of the Northern Rivers region and nestled on 90 lush acres with fat cattle and cane, welcome to Platypus Point! This stunning and highly unique property boasts fertile soils, town water, a pumping license, and a magnificent home! Just 5 minutes to Murwillumbah and a short drive to Gold Coast Airport and Brunswick Heads, this is the perfect rural escape within easy reach of urban conveniences.

The charming 4-bedroom, 2-bathroom home features warm timber accents, light-filled living spaces, high ceilings, a cozy fireplace, and expansive verandas overlooking a swimming pool with a sauna, and established gardens with fruit trees. Enjoy 1.3 km of revegetated riverbanks, old-growth forest, bass fishing, and easy-to-maintain paddocks. With breathtaking views of Mt Warning and the surrounding countryside, having last sold in the market 30 years ago, this is a country paradise you'll never want to leave. Welcome to your dream retreat, here at Platypus Point!

Call Matt Armstrong today to arrange an inspection!

All information contained herein is gathered from sources we believe to be reliable. Elders Tweed Valley and its staff will not be held responsible for any act or omission

TYPE: For Sale

INTERNET ID: 71P1616

SALE DETAILS

[Contact Agent](#)

CONTACT DETAILS

Tweed Valley & Coolangatta

1/36-42 Main Street & 3/70

Griffith Street

Murwillumbah &

Coolangatta, NSW/QLD

02 5602 2950

Matt Armstrong

0400 162 283

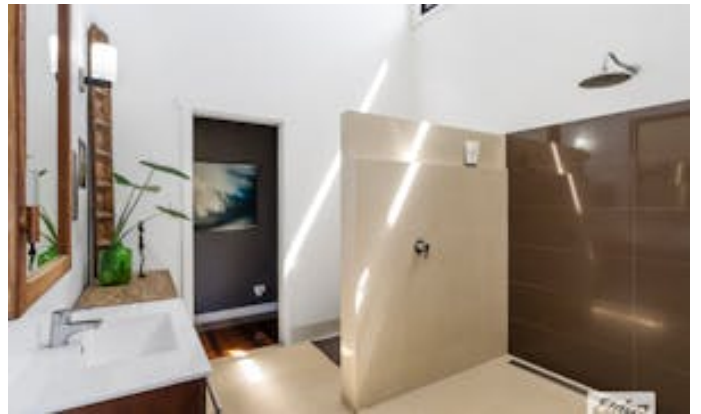
arising from the accuracy of such material. We cannot guarantee its accuracy and interested persons should rely on their own enquiries

- Land Area 35.329057 hectares
- Bedrooms: 4
- Bathrooms: 3

HOMESTEAD

Bedrooms	4
Bathrooms	3











Plans are indicative only. Dimensions are approximate. All information contained herein is gathered from sources we believe to be reliable. However, we cannot guarantee its accuracy and interested persons should rely on their own enquiries

225 TYALGUM ROAD, EUNGELLA

4
 2
 2
 Internal: 229 m² | External: 222 m² | Shed: 189 m² | Total: 640 m²