

## 7 Woodgee Street, MURWILLUMBAH, NSW 2484

### Elevated Duplex Living with Valley Views

Beautifully appointed and positioned high in a quiet, family friendly street, this three bedroom, two bathroom duplex delivers easy living with a relaxed sense of space and outlook.

The home features a modern kitchen, double garage and an entertaining deck that captures sweeping views across the valley. It is the perfect setting for morning coffee, weekend barbecues or simply unwinding at the end of the day.

With easy access to quality schools, Murwillumbah Golf Club and the heart of town only minutes away, this is a smart option for young families, downsizers and investors alike.

#### Key features

- \* Three well appointed bedrooms and two bathrooms
- \* Modern kitchen with practical everyday functionality
- \* Expansive entertaining deck with valley views

The particulars contained herein are supplied for information only and shall not be taken as a representation in any respect on the part of the vendor or its agent. Interested parties should contact the nominated person or office for full and current details.

**TYPE:** For Sale

**INTERNET ID:** 71P1631

#### SALE DETAILS

**\$965,000**

#### CONTACT DETAILS

**Tweed Valley & Coolangatta**

1/36-42 Main Street & 3/70  
Griffith Street  
Murwillumbah &  
Coolangatta, NSW/QLD  
02 5602 2950

**Craig Dudgeon**  
0408 188 184

\* Double garage and low maintenance duplex living

\* Quiet, family friendly street close to schools, golf and town

Don't let this opportunity be the one you missed!

Contact

Craig Dudgeon 0408188184

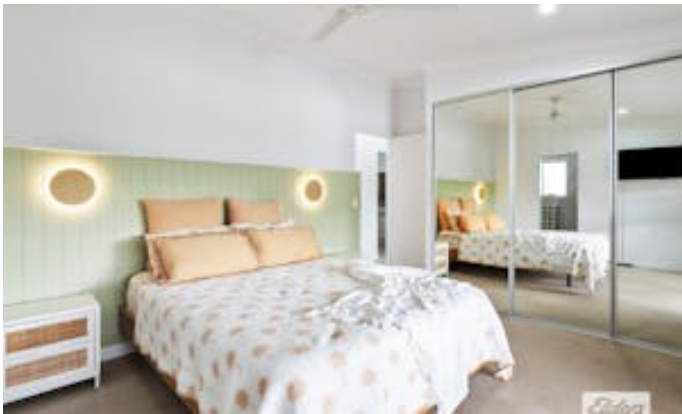
Rob Yette 0458 896 379

All information contained herein is gathered from sources we believe to be reliable. Elders Tweed Valley and its staff will not be held responsible for any act or omission arising from the accuracy of such material. We cannot guarantee its accuracy and interested persons should rely on their own enquiries.

Other features: Close to Schools, Close to Shops, Close to Transport, Exhaust

- Bedrooms: 3
- Bathrooms: 2
- Double garage
- Ensuite
- Floorboards











Plans are indicative only. Dimensions are approximate. All information contained herein is gathered from sources we believe to be reliable. However, we cannot guarantee its accuracy and interested persons should rely on their own enquiries

7 WOODGEE STREET, MURWILLUMBAH

3   
 2   
 2  
 Internal: 192 m<sup>2</sup> | External: 39 m<sup>2</sup> | Total: 231 m<sup>2</sup>