

## 31 Eyles Avenue, MURWILLUMBAH, NSW 2484

### A Home with Heart, History & Sweeping Views

Privately nestled in one of Murwillumbah's most admired hillside pockets, this beautifully preserved residence captures a warmth and personality that is increasingly rare to find. Held in an elevated position with sweeping views across town to the surrounding ranges, the home combines timeless craftsmanship, generous proportions and an unmistakable sense of character.

Set across two levels on a 608sqm block with rear access from Myrtle Lane, the home has been lovingly maintained while retaining many of its original design elements that make it feel truly special. From the curved walls and stepped cornices to the extensive built-in cabinetry and original timber floors, every space reflects the thoughtful workmanship and charm of its era.

Natural light pours through the home, with the expansive living area flowing effortlessly onto the front balcony where the mountain outlook becomes part of everyday living. The adjacent dining space connects beautifully with the covered rear patio and terraced gardens, creating inviting spaces to relax, entertain or simply enjoy the peaceful surrounds.

The original kitchen is a standout feature of the home, offering rare curved windows,

The particulars contained herein are supplied for information only and shall not be taken as a representation in any respect on the part of the vendor or its agent. Interested parties should contact the nominated person or office for full and current details.

**TYPE:** For Sale

**INTERNET ID:** 71P1642

**SALE DETAILS**

**Contact Agent**

**CONTACT DETAILS**

**Tweed Valley & Coolangatta**

1/36-42 Main Street & 3/70  
Griffith Street  
Murwillumbah &  
Coolangatta, NSW/QLD  
02 5602 2950

**Kristie Hoffman**

0427 328 764

matching built-in seating booth and an authentic retro aesthetic that feels both nostalgic and timeless.

Features of the property include:

- Three bedrooms on the upper level including the master with elegant bay window and direct balcony access
- Spacious living area with fireplace and ash chute to garage for convenient cleaning
- Front balcony positioned to embrace sweeping elevated views across Murwillumbah and surrounding ranges
- Separate dining area opening onto the covered rear patio with slate flooring
- Original character kitchen with curved built-in seating booth and matching curved windows
- Study nook positioned on the upper level
- Beautiful original built-in cabinetry throughout, including built-in beds, wardrobes and curved storage cupboards
- Lower level featuring oversized single lock-up garage, fourth bedroom, home office area with separate front entry and internal staircase
- Character features throughout including polished hardwood floors, stepped coving cornices, curved walls, original sash windows, French doors and two-way hinged doors
- Terraced backyard with rear lane access

Beyond the home itself, the location is one of Murwillumbah's most tightly held and walkable settings. Enjoy being only a short stroll to the CBD, caf  s, restaurants, galleries and everyday conveniences while still feeling elevated, peaceful and connected to the surrounding landscape.

Located approximately 25 minutes to Gold Coast International Airport and 20 minutes to the Tweed Coast beaches, this is a home filled with soul, history and lasting appeal in the heart of the Tweed Valley.

Kristie Hoffman 0427328764 ~ Proudly representing the sale of this property.

Disclaimer:

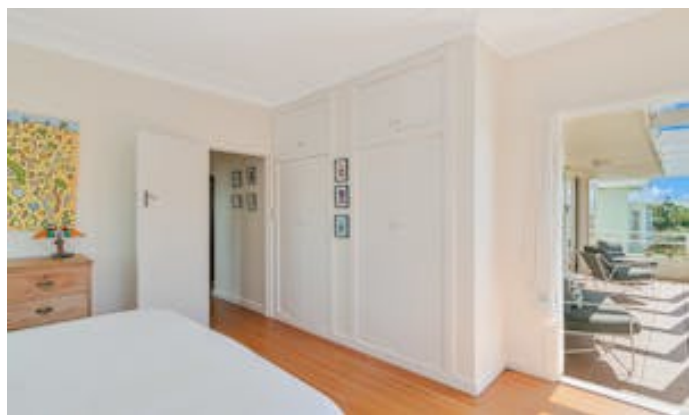
All information contained herein is gathered from sources we believe to be reliable. Elders Tweed Valley and its staff will not be held responsible for any act or omission arising from the accuracy of such material.

We cannot guarantee its accuracy and interested persons should rely on their own enquiries.

Other features: Area Views, Close to Schools, Close to Shops, Close to Transport

- Land Area 608.00 square metres
- Bedrooms: 4
- Bathrooms: 1
- Single garage
- Floorboards











UPPER LEVEL



LOWER LEVEL



Scale in metres. Indicative only. Dimensions are approximate. All information contained herein is gathered from sources we believe to be reliable. However we cannot guarantee its accuracy and interested persons should rely on their own enquiries.

INTERNAL : 204 SQ.M.  
EXTERNAL : 45 SQ.M.



31 Eyles Avenue, Murwillumbah

