

28 Hall Drive, MURWILLUMBAH, NSW 2484

Elevated 3 Bedroom With Views!

A charming 3-bedroom, 1 bathroom brick and weatherboard home with a tiled roof, timber deck, and timber floorboards. Within close range to the Murwillumbah golf course, this elevated 683 square meter property features a single carpark and a fully fenced rear yard with established trees. Enjoy breathtaking sunset views to Mount Warning and surrounding ranges from the firepit area. Conveniently located just 5 minutes from the heart of Murwillumbah and only 35 minutes from Northern Rivers beaches and Gold Coast airport. Don't miss this opportunity to own your dream home with the perfect blend of comfort and stunning natural surroundings!

Call Matt Armstrong today to arrange an inspection!

Disclaimer:

All information contained herein is gathered from sources we believe to be reliable. Elders Tweed Valley and its staff will not be held responsible for any act or omission arising from the accuracy of such material.

We cannot guarantee its accuracy and interested persons should rely on their own enquiries.

TYPE: For Sale

INTERNET ID: 71P1650

SALE DETAILS

\$845,000 - \$865,000

CONTACT DETAILS

Tweed Valley & Coolangatta

1/36-42 Main Street & 3/70
Griffith Street
Murwillumbah &
Coolangatta, NSW/QLD
02 5602 2950

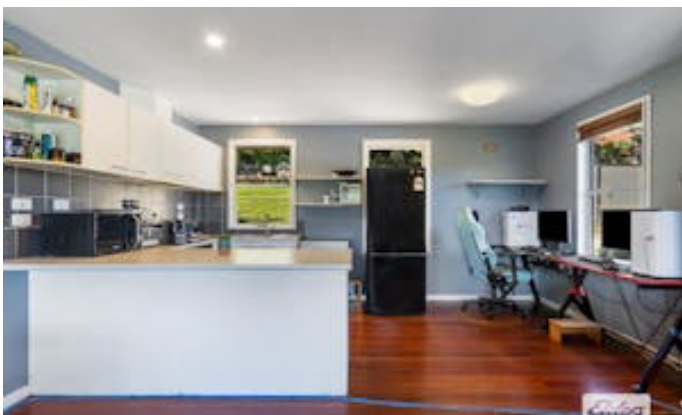
Matt Armstrong

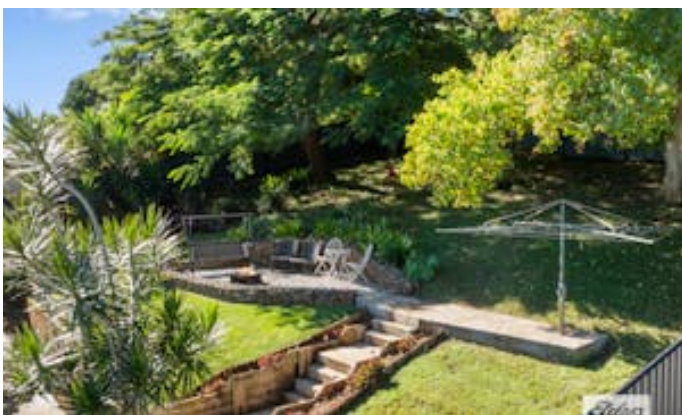
0400 162 283

Other features: Area Views, Close to Schools, Close to Shops, Close to Transport

- Land Area 683.00 square metres
- Bedrooms: 3
- Bathrooms: 1
- Car Parks: 2
- Floorboards











Plans are indicative only. Dimensions are approximate. All information contained herein is gathered from sources we believe to be reliable. However, we cannot guarantee its accuracy and interested persons should rely on their own enquiries.

28 HALL DRIVE, MURWILLUMBAH

3
 1
 1
 Internal: 80 m² | External: 36 m² | Total: 116 m²