

8 Amarillo Drive, DUNBIBLE, NSW 2484

Exceptional Family Living Amidst Nature's Beauty

Set on a picturesque 4,013 sqm block and only 10 minutes to Murwillumbah is this immaculate single level home presenting a sense of space, tranquillity, and an idyllic kids playground. Enveloped by natural surrounds, and with extensive recent upgrades, the spacious home is positioned in a private enclave with widespread native and tropical flora. The multiple living areas seamlessly open to the generously covered alfresco area, creating an inviting setting for year round entertaining. Whether you're searching for a forever family home, an entertainer's haven or a peaceful acreage retreat, this remarkable property will provide.

Features of the property include:

- Four bedrooms with built-in robes including the main on a separate wing with outdoor access, walk-in robe, and ensuite
- The main bathroom services the other bedrooms with separate toilet
- At the heart of the home is the brand-new kitchen featuring engineered stone bench tops, Bosch oven and induction cooktop, providing a convenient space for everyday family life and effortless entertaining

TYPE: For Sale

INTERNET ID: 71P1659

SALE DETAILS

Contact Agent

CONTACT DETAILS

Tweed Valley & Coolangatta

1/36-42 Main Street & 3/70
Griffith Street
Murwillumbah &
Coolangatta, NSW/QLD
02 5602 2950

Kristie Hoffman

0427 328 764

- Two separate and spacious living areas connect with the hub kitchen and both open out to the covered area
- Separate laundry with storage cupboard
- Outdoor covered alfresco (approx.28sqm) overlooks the large fully fenced rear yard
- Ideal for the home handy man or work from home are the two sizable sheds (one powered) with separate street access
- Gardens feature fully fenced rear yard and side tropical and native area with convenient two street access
- Recent valuable updates include new LED lighting, new carpeted bedrooms and freshly painted throughout, and new ducted A/C

In a very private location with all amenities at reach, the property is only 10 minutes to Murwillumbah, 25 minutes to beautiful Wooyung beach and 40 minutes to Gold Coast International Airport. This appealing property offers a tranquil lifestyle in such an idyllic location.

Kristie Hoffman 0427328764 ~ Proudly representing the sale of this property.

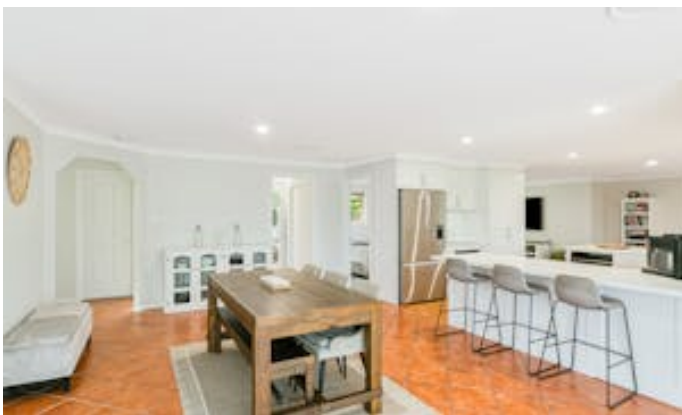
Disclaimer:

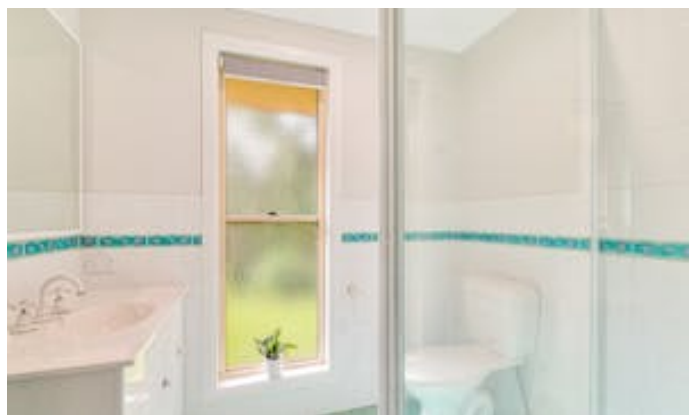
All information contained herein is gathered from sources we believe to be reliable. Elders Tweed Valley and its staff will not be held responsible for any act or omission arising from the accuracy of such material.

We cannot guarantee its accuracy and interested persons should rely on their own enquiries.

Other features: Area Views

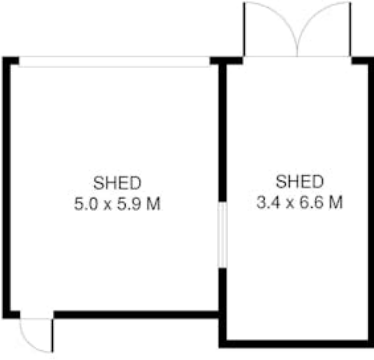
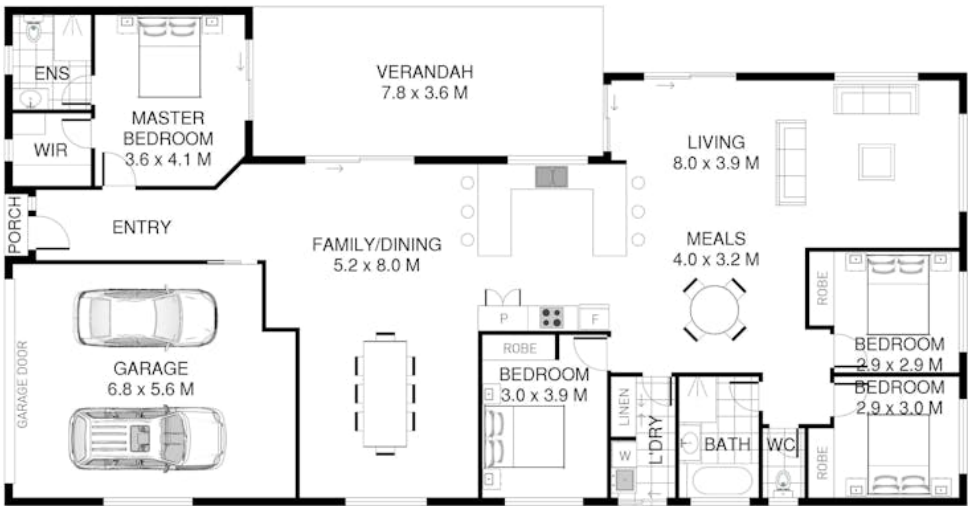
- Land Area 4,013.00 square metres
- Bedrooms: 4
- Bathrooms: 2
- Double garage











Scale in metres. Indicative only. Dimensions are approximate. All information contained herein is gathered from sources we believe to be reliable. However we cannot guarantee its accuracy and interested persons should rely on their own enquiries.

INTERNAL	: 233 SQ.M.	
EXTERNAL	: 28 SQ.M.	
SHED	: 52 SQ.M.	

8 Amarillo Drive, Dunbible

