



33 Templar Road, GLENWOOD, QLD 4570

HIDDEN GEM WITH ALL THE BELLS AND WHISTLES!

****BREAK LEASE****

This executive-style property offers complete privacy amidst large shady and fern trees, alongside stunning garden beds. A seasonal creek at the property's edge attracts local wildlife. The driveway, lined with green grass and palms, leads to a large dam with pristine water and a bore.

The property features a 6.5m x 6m carport and an 8m x 9m shed with power, plus a new solar system with 5 bank batteries. A well-appointed studio with air conditioning is located at the rear of the shed.

A large rear entertainment area with a seven-seater spa is perfect for gatherings. The front of the modern brick home offers another large verandah with views over the gardens and dam with a water fountain.

The interior boasts a modern decor, raked ceilings in the formal lounge, large windows, A/C, and fans. The dining room provides access to the rear entertainment area, and the kitchen includes ample storage, a large pantry, and modern appliances.

The particulars contained herein are supplied for information only and shall not be taken as a representation in any respect on the part of the vendor or its agent. Interested parties should contact the nominated person or office for full and current details.

TYPE: For Rent

INTERNET ID: 72P16935

RENTAL DETAILS

Rent / Lease:

\$650.00 pw

CONTACT DETAILS

Curra Country
Shop 1 Birdwood Drive
Gunalda, QLD
07 5484 6755

Sandra Fox
0407 693 257

Bedrooms 2 and 3, both with ceiling fans and robes, are separate from the master bedroom. The bathroom features a separate shower, bath, and basin with natural light and modern decor. The laundry offers plenty of space, a linen press, and a broom closet.

The spacious master bedroom includes a ceiling fan, a large window with garden views, a large his/hers robe, and a modern ensuite.

N.B. Please do not enter any property without an agent present. All inspections by appointment only. Please phone or email Sandra to arrange a viewing time.

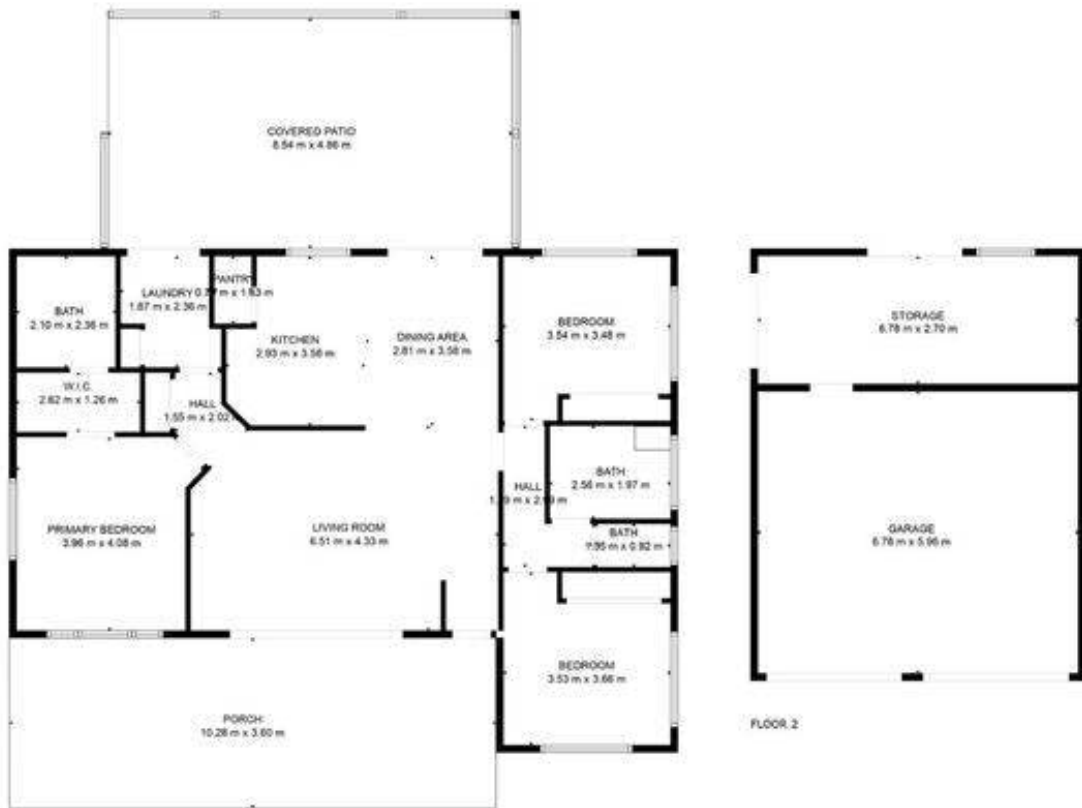
Please contact our office to review the General Tenancy Agreement (Form 18a), the standard terms & any special terms before submitting an application. Please be advised the Information Statement (Form 17a) is also available from our office or website www.elderscurracountry.com.au

- This property is: Unfurnished
- Pets: No
- Available Now
- Land Area 5,073.00 square metres
- Building Area: 133.00 square metres
- Bedrooms: 3
- Bathrooms: 2
- Double garage
- Double carport









FLOOR 1

FLOOR 2

TOTAL: 118 m²
 FLOOR 1: 118 m², FLOOR 2: 0 m²
 EXCLUDED AREAS: PORCH: 37 m², COVERED PATIO: 42 m², GARAGE: 40 m²,
 STORAGE: 18 m²

FLOOR PLAN CREATED BY COMBOSCALPH. REQUIREMENTS DESIRED. HIGHLY RELIABLE BUT NOT GUARANTEED.



Curra
Country